

JAMAICA IAMAICA IAMAICA

JAMAICA JAMAICA
 9 APR 1802 18 MAR 1803

JAMAICA
 8 JUN 1806

JAMAICA
 19 MAY 1809

JAMAICA
 30 JAV 1813

JAMAICA
 23 AP 23 821

JAMAICA
 SE 1 1828

SAV LA MAR

MONTEGO-BAY JA

FALMOUTH

SPANISH TOWN
 FE 6 1839

DUNCAN'S
 FE 18 1841

ST ANNS - BAY
 JU 23 1844

FALMOUTH - JAMAICA
 AU 20 1846

PORUS
 MY 3 1850

RODNEY-HALL - JAMAICA
 MY 15 1851

DRY-HARBOUR
 JU 23 1857

JAMAICA
 13 NO 13 820 PAID

JAMAICA
 13 SE 1824 PAID

PAID
 KINGSTON
 SE 8 1839

JAMAICA
 AP 11 1845 PAID

KINGSTON JAMAICA
 FE 22 1853 PAID

PAID 8^p

TOO LATE Too Late

TOO LATE

Ship Letter
 JAMAICA

JAMAICA
 SHIP LETTER

KINGSTON
 SHIP LETTER
 26 SE 26 1826

KINGSTON
 SHIP LETTER
 AP 16 1844

The Nicholson types given above are four-fifths actual size and are illustrated by courtesy of Messrs. Frank Godden Ltd.

Robson Lowe sale of Dr R H Urwick Jamaica 29 May 1957

Img	Lot	Description	Est	Real
		<u>Pre-Adhesive Covers</u>		
		This section of the collection is undoubtedly the finest and most complete in the world. In a number of instances the covers bear examples of the only known impressions of a handstruck stamp. The finest copies that have been sold through our Postal History Auctions during the past twenty years are included in this sale The types referred to in the descriptions are those as set out in 'Jamaica Pre-Stamp Covers, 1760-1860' by L. C. C. Nicholson		
	401	1757 (two duplicate covers), 1768 (two covers), 1772 and 1787 entire letters to London, one addressed to the Jamaica Coffee House, the first three with arrival Bishop marks; there are no Jamaica handstamps but three have Dover or Portsmouth Ship Letter markings. Also a map of the island by Moll dated 1728 and showing the different parishes	7.00	8.50
	402	1772, 1776, 1779, 1800 and 1803 covers to England showing strikes of J2, J3, J1, J4 and J5 respectively, mostly fine, the last two across flap at back. The 1779 cover is endorsed as having originated at Harbour Island, Bahamas; the first three show arrival Bishop marks	16.00	20.00
	403	1769, 1771, 1779 and 1800 covers to Britain showing strikes of J3, J2, J1 and J4 respectively, good to fine, the first three with arrival Bishop marks	12.00	12.50
	404	1771, 1788, 1795 and 1801 covers to Britain showing strikes of J3, J2 (2) and J4 respectively, good to fine, the first showing arrival Bishop mark	10.00	13.50
	405	1807 entire letter showing the large fleuron type J6 and a straight-line 'MORANT BAY/JA' type T2, both at back and fine strikes	6.00	6.50
	406	1808 (2), 1809, 1811, 1812 (2), 1814, 1815 (2), 1816, 1818, 1820 (2), 1823 (2) and 1829 covers showing strikes of J6, J6a, J7, J7a, J8, J8a, J8b, J9, J9a and J10, fair to fine, one with straight-line 'MORANT BAY' and another with rather indistinct 'SAVANNA-LA-MAR/JA'. A valuable assembly	35.00	40.00
		<u>Post Towns</u> <u>Kingston Types T1 and K1 to K7</u>		
img	407	KINGSTON: 1789, an entire letter addressed to East End, Jamaica, and showing a good strike of the 'KING/STON' type T1 (see Photo)	7.00	10.00
	408	1807 entire letter to Dumfries with a fair strike of the rare semi-circular datestamp and an oval double-framed Ship Letter, Dover. Also a photograph of another strike	8.00	8.00
	409	1824, 1832, 1834, 1836, 1838, 1840, 1842, 1850, 1852, 1855, 1856, 1858, 1862 and 1863 covers showing strikes of types K1, K1a, K2, K3, K4, K5, K5a, K6, K6c, K7, K8 and K9, two of which originated in Cuba and show Jamaican and French transit marks. Also a 1901 underpaid cover from the USA to Algiers showing the use of the A01 obliterator by the Foreign Branch of the GPO	10.00	15.50
		<u>Straight Line Types T1 to T3</u>		
img	410	ALEXANDRIA: 1837 entire letter from Brownstown to London showing straight-line 'ALEXANDRIA' type T3 and Kingston c.d.s (see Photo)	8.00	9.50
	411	ANNOTTO BAY: 1820 entire letter from London showing straight-line 'ANNOTTO BAY/JA' type T2 receiving stamp	5.00	4.25
	412	BATH: 1837 and 1851 entire letters to Scotland, the first with albino 'BATH' type T3, the last with c.d.s. type P2	7.00	6.50
	413	BLACK RIVER: 1794 local entire letter with type T1, a good strike, partly albino. Also 'CHAPELTON' type T2a on a rather soiled 1804 entire letter from Clarendon to London	8.00	9.50
	414	CLARENDON: 1838 and 1844 entire letters showing 'CLARENDON' type T3 and 'CLARENDON/JA' type T2 respectively, fair strikes	8.00	8.50
img	415	DRY HARBOUR: 1803 entire letter showing 'DRY HARBOUR/JA' type T2, a very fine strike at back, and also 'JAMAICA' with date, type J5, alongside. The text describes the fear of invasion at that time (see Photo)	7.00	9.50
	416	1827, 1828, 1837 and 1838 entire letters from Dry Harbour or neighbouring plantations to Britain showing poor to good impressions of types T2 (2, one in red), T2a and T3 (in blue). all at back and all with contemporary Kingston transit stamps	9.00	10.50
	417	FALMOUTH: 1796, 1828 and 1835 entire letters to London showing fine strikes of type T1, T2 and T3 respectively, all at back, the first two with 'JAMAICA' and the last with Kingston transit stamps	8.00	11.50

Robson Lowe sale of Dr R H Urwick Jamaica 29 May 1957

Img	Lot	Description	Est	Real
	418	FLINT RIVER: 1816 entire letter to London with a good strike of type T2 and Jamaica fleuron transit datestamp, both at back. Also an 1856 local cover, rather stained, with good strikes of the c.d.s. type P2 of Flint River and of Montego Bay at back, the first with day of month in manuscript	8.00	12.00
img	419	GOSHEN: 1825, 1840 and 1847, two entire letters and a circular, one local and two to Scotland, with good impressions of types T2, T3 and P2 respectively, the first two rather heavy and two at back (see Photo for one)	12.00	14.50
	420	GREEN ISLAND: 1820 entire letter showing type T2, a fine clear strike, and Jamaica fleuron transit datestamp, both at back. Also an 1850 cover showing Green Island c.d.s. type P3 and Montego Bay type P2 at back	8.00	10.00
	421	GREEN POND: 1809. 1820 and 1827 entire letters to Britain showing types T2, T2a and a red manuscript 'Green Pond', all at back; also contemporary Jamaica fleuron transit stamps	10.00	14.00
	422	HIGHGATE: 1838 and 1842 entire letters showing fair strikes of types T3 and P2 at back	5.00	8.50
img	423	LACOVIA: 1783 cover to London showing a very fine 'LACOVIA type T1, 'JAMAICA' type J2 and London receiving Bishop mark, all at back. There is a red manuscript 'Inland Postage Paid 712' (see Photo)	18.00	20.00
	424	1828 entire letter to Britain with a clear strike of type T2a across the flap at back and a rather blurred Jamaica fleuron transit datestamp	5.00	5.50
	425	LITTLE RIVER: 1829 entire letter from London addressed to Kingston and returned to London which has picked up a good impression of the 'LITTLE RIVER' type T2a with manuscript 'JA' beneath in the course of its travels	7.00	7.00
	426	LUCEA: 1790, 1805, 1829, 1839 and 1841 entire letters, the second from the Captain of H.M.S. 'Seine' addressed to the C. in C. at Port Royal and enclosing details of four Spanish vessels held, and showing fair to fine strikes of types T1, T2, T2a, T3 and P2, the first also with 'JAMAICA' type J2 and two others with transit datestamps	15.00	20.00
	427	MANCHIONEAL: 1822 and 1836 entire letters to Scotland showing good strikes of types T2a and T3., the first on front, the last over flap at back, both with transit datestamps	8.00	10.50
	428	MAY HILL: 1810 and 1829 entire letters to Britain, both showing strikes of type T2a at back, one very fine, the other in albino, both with Jamaica fleuron transit stamps	6.00	10.00
img	429	MILE GULLY: 1839 entire to London showing a very fine impression of type T3 across flap at back (see Photo)	8.00	10.50
img	430	MONTEGO BAY: 1796 entire to Scotland with good strikes of type T1 and also 'JAMAICA' type J2 at back (see Photo)	12.00	12.50
	431	1825, 1832, 1835 and 1839 entire letters to Britain showing fair to fine strikes of types T2, T2a and T3 (2), all with Kingston transit stamps	8.00	11.50
img	432	MORANT BAY: 1773 entire letter from Wolverhampton addressed to Kingston which shows a superb 'MORANT/BAY' type T1 at back (see Photo)	20.00	24.00
	433	1807 and 1833 covers to Britain showing good strikes of types T2 and T2a, the last in albino, also transit datestamps, the first type type J6	5.00	5.50
	434	OLD HARBOUR: 1842 entire letter showing a fine strike of type P2 over the flap at back. Also 'PEARTREE GROVE', a rather damaged 1840 entire letter to Scotland showing a good strike of the same type	6.00	6.50
	435	PORT ANTONIO: 1817 and 1838, the first an entire to Scotland with a fine strike of type T2 across flap at back, the other an entire letter addressed to Kingston and with a very fine strike of type T3 on front, both a little damaged	12.00	15.50
img	436	PORT MARIA: 1803 entire letter from London addressed to Kingston, a little damaged and browned by climate but showing a very fine 'PORT-MARIA/JA' type T2 over flap at back; stated to be the only known impression for Port Maria (see Photo)	8.00	13.50
	437	PORT MORANT: 1819 entire letter to Scotland showing a good but heavily inked strike of type T2 over the flap at back and a Jamaica fleuron transit stamp	6.00	8.50
	438	RIO BUENO: 1837 entire to London showing a fine strike of type T3 at back and Kingston transit datestamp	7.00	10.50
	439	RUNAWAY BAY: 1837 entire letter to London, rather soiled, with a faint but unmistakable reddish impression of type T3 across flap at back. Also ST. ANNE, an 1892 entire letter to Scotland with a fine albino impression of type T1 at back, the first to be	6.00	9.00
img	440	ST. ANNS: 1815 entire letter to Scotland with a fine strike of type T2 at back, also Jamaica fleuron transit datestamp (see Photo)	8.00	11.50

Robson Lowe sale of Dr R H Urwick Jamaica 29 May 1957

Img	Lot	Description	Est	Real
img	441	SALT SPRING: 1790 entire letter to London with a fine impression of type T1 and 'JAMAICA' type J2 transit stamp across flap at back, rather stained and damaged but very rare (see Photo)	25.00	28.00
	442	SAVANNA-LA-MAR: 1799 entire letter to Britain with a rather over inked impression of the rare 'SAV LA MAR' type T1 at back as well as Jamaica type J4 transit datestamp; stated to be the earliest known	10.00	12.00
	443	1826 and 1837 entire letters, the first to Scotland and showing a fine strike of type T2 across flap at back, the other to Kingston and with a good reddish impression of type T3 at back	7.00	7.50
img	444	SPANISH TOWN: 1796 entire letter to Scotland, slightly soiled but with a fine strike of type T1 at back. The text states that a stop had been put to business by Martial Law on account of the Rebellion of the Maroons of Trelawny (see Photo)	12.00	14.00
	445	1809, 1815, 1830 and 1839 entires and entire letters to Britain, the first two showing fine strikes of type T2, one with a star between 'SPANISH' and 'TO', the others showing poorish strikes of types T2a and P1 respectively, the last an interesting docum	6.00	8.50
		<u>Circular Datestamp Types P2 to P7</u>		
	446	1839-57, a series of thirty-four entire letters showing types P2, P3 or P4 of Alexandria, Annotto Bay, Black River, Buff Bay, Chapelton, Clarendon, Dry Harbour, Duncans, Falmouth, Little River, Manchioneal, Mandeville, Mayhill, Moneague, Montago Bay, Morant Bay, Ocho Rios, Port Antonio, Port Maria, Port Royal, Rio Bueno, Rodney Hall, St Anne's Bay, St. David, Savanna-La-Mar, Spanish Town and Vere; a valuable lot with many fine impressions. Also an 1871 circular announcing the auction of a sugar plantation and maps showing Post Offices in 1860 and 1879	40.00	45.00
	447	1850-66 entire letters or covers bearing c.d.s. type P5 of Clarendon and Plantain Garden River., type P6 of Buff Bay, Lucea and Rodney Hall; and type P7 of Dry Harbour, Falmouth, Gayle, Mandeville and Ramble., one with 'JAMAICA PAID' c.d.s. type PD4 and others with Jamaica transit marks	12.00	17.00
	448	GORDON TOWN: 1854 entire addressed to an army officer at 'St. Vincent or Barbadoes' bearing the receiving c.d.s. of both these islands, transit c.d.s. of Kingston and St. Thomas and a rather watery type P5 c.d.s. of Gordon Town	8.00	9.50
	449	1863-66, four covers addressed to Montego Bay (two a little damaged) and one to Liverpool showing single-lined c.d.s. of Green Island, Lucea, Malvern, Montego Bay, Savanna-La-Mar, Spanish Town and Kingston, some being transit marks	12.00	13.50
		<u>Ship Letters</u>		
img	450	1813 entire letter to London showing a fine strike of the double-lined oval 'Ship Letter/JAMAICA' with crown in centre, type S1, and also a very clear 'PACKET-LETTER' (see Photo)	14.00	23.00
	451	1816 entire letter from Kingston to Glasgow showing a fair impression of type S1, also Jamaica fleuron transit stamp and Portsmouth Ship Letter	10.00	11.50
img	452	KINGSTON: C. 1835 entire, apparently from Chile or Peru to London, showing two fair strikes of the circular 'KINGSTON/SHIP LETTER' type S2 but without date in centre used as transit marks; the top impression has a manuscript 'From Chagres' (Panama) in centre. A very interesting cover ex the Huth correspondence (see photo)	10.00	13.00
	453	1840 entire letter from Scotland to Manchester, Jamaica, showing a good strike of the 'KINGSTON/SHIP LETTER' c.d.s. type S2a, the first renewal	7.00	10.00
	454	1841 entire from the Bahamas addressed to the Bishop of Jamaica, no postal marking of origin but bearing a fair impression of type 2a, the second renewal with smaller lettering; the cover is a little damaged	5.00	5.50
img	455	1842 entire letter from Cartagena to Kingston showing a fine impres- sion of type 2a, the second renewal with smaller lettering. Very fine and rare (see Photo)	14.00	16.50
img	456	1845 entire from Colombia to London, creased but showing an oval-framed 'OCANA/FRANCA' and two good strikes of the 'JAMAICA/SHIP LETTER' type S3 (see Photo)	10.00	11.00
img	457	1864 cover to England inscribed 'Ship Letter Mail' and franked by current 3d. adhesive cancelled 'A32' and with a large red '1½' paid mark (type PD9) alongside; there is a Buff Bay c.d.s. at back and a fine Jamaica Ship Letter type S3 on front as well as a Liverpool Ship receiving datestamp of the tombstone type. A charming cover, full of character (see photo)	14.00	18.00
img	458	1873 entire letter from Colon to Kingston showing a clear octagonal- framed 'SHIP LETTER' (see Photo)	5.00	8.00

Robson Lowe sale of Dr R H Urwick Jamaica 29 May 1957

Img	Lot	Description	Est	Real
	459	MONTEGO BAY: 1841. entire letter from New York to Kingston showing a Montego Bay c.d.s. type P2 and a rather poor but rare rectangular- framed 'MONTEGO BAY/SHIP LETTER'	5.00	7.00
img	460	MORANT BAY: 1834 entire from Liverpool to Kingston, creased centrally but showing a clear rectangular-framed 'Morant Bay / SHIP LETTER' (see Photo)	16.00	20.00
img	461	ST. ANNS BAY: 1848 entire letter from Saleni, U.S.A., to Mandeville showing across the back flap a very fair strike of the rectangular- framed 'Saint Arms Bay/SHIP LETTER' as well as the Mandeville c.d.s. (see Photo)	12.00	16.00
		<u>Paid Stamps</u>		
	462	1820, 1829 and 1839, two entires and a front, all addressed to Britain, the first with 'JAMAICA/PAID' c.d.s. type PD1, stated to be the earliest recorded, the second with type PD2 and the last creased but with a fine impression of the very rare 'PAID / KINGSTON / JAMAICA' type PD3	10.00	14.00
	463	1824 entire to France showing a fine 'JAMAICA/PAID' c.d.s. type PD1 and British and French transit marks	4.00	6.50
img	464	1841 entire letter from Morant Bay to Liverpool showing a reddish black 'PAID' with raised 'P' and full stop, believed to be of Morant Bay, and there is a c.d.s. type P2 at back. Also 1857 entire letter from St. Anns Bay to London, heavily creased by two folds but showing a reddish circular-framed 'PAID' of St Anns Bay, a red 'JAMAICA / PAID' type PD4 and cds type P3 (see photo)	10.00	11.50
	465	1842-67, seven entire letters and covers showing 'JAMAICA / PAID' type PD4, three different types, or 'KINGSTON JAMAICA / PAID' type PD5, also c.d.s. of Montego Bay, Port Maria (very fine), Annotto Bay and Green Island. Also an 1871 military cover inscribed 'O.H.M.S. - Free', an 1894 cover to New York with small rectangular-framed 'JAMAICA PAID / 1 MY 1894' and a 1901 cover from Troy marked 'Paid 1d' in blue pencil and with double-ringed 'PAID / JAMAICA' cds used during a temporary shortage of adhesives	8.00	14.50
img	466	1847 entire to London showing circular-framed 'MANDEVILLE/PAID/ JAMAICA', a fine red strike, 'JAMAICA / PAID' c.d.s. type PD4 in red, a large red sloping of entirely different type to PD7, probably of Mandeville, and there is a 'MANDEVILLE' c.d.s. type P2 at back. A rare and beautiful cover though creased by fold (see photo)	1.00	11.00
img	467	1849 entire letter from Montego Bay to Spanish Town showing type P2 c.d.s. of both towns and a fine circular-framed 'PAID/8d.' type PD6 in red. The cover is a little soiled and is pierced by three worm holes (see Photo)	8.00	9.50
	468	1856, a copy of the 'Family News-paper' (Kingston) addressed to London showing red 'KINGSTON JAMAICA/PAID' type PD5 and a large red '1' type PD8. Also an 1871 entire letter from St. Thomas to Kingston, rather rust stained but showing a black strike of PD8 in addition to a red 'ST THOMAS / PIAD' cds	7.00	8.00
	469	1861 circular from Kingston to Spanish Town with c.d.s. of the latter and a red '' type PD7, a fine strike; the cover is marked and damaged by a heavily inked drawing inside	5.00	7.00
		<u>Instructional Stamps</u>		
img	470	POSTAGE DUE: Two 1844 entires, the first from Kingston to Clarendon and showing a large handstruck '4' type TP1, the other also a local entire and showing a similar handstruck '8', both creased by folds but very rare (see Photo)	12.00	18.00
img	471	1845 entire letter from Kingston to May Hill showing a large handstruck '6', creased by fold but very rare (see Photo)	7.00	8.50
	472	1846 and 1847 entire letters from Kingston to England, both creased by folds but showing good strikes of the handstruck '1/-' type TP2	5.00	5.00
	473	LATE FEE: 1827 entire to Scotland, creased but showing a fair strike of the 'JAMAICA/TOO LATE' c.d.s. and Jamaica fleuron transit mark. Also 1851, 1867 and 1874 covers, the first to St. Vincent and showing large sloping 'MORE TO PAY', the others local and showing 'TOO LATE' stamps type TL1 and TL3 respectively	14.00	16.50
		<u>Commercial Rooms Agency</u>		
	474	1818 entire letter to England showing a fine strike of the 'Commercial Rooms' handstamp on the damaged flap at back and also a Portsmouth Ship Letter	6.00	8.00
img	475	1821 from Curacao to London showing the double-lined rectangular framed 'COMMERCIAL ROOMS/Kingston Jamaica' type CR1 used as a transit mark and a red Portsmouth Ship Letter (see Photo on page 10)	8.00	8.50
img	476	1822 entire letter from Kingston to Scotland showing a fine strike of the unframed 'COMMERCIAL ROOMS/KINGSTON JAMAICA' type CR2 and a Swanage Ship Letter at back (see Photo on page 10)	7.00	14.00

Robson Lowe sale of Dr R H Urwick Jamaica 29 May 1957

Img	Lot	Description	Est	Real
	477	1823 entire letter from Kingston to London, creased by fold but showing a good strike of the same handstamp and a red Portsmouth Ship Letter	5.00	6.00
	478	1826 entire letter with enclosure from Kingston to New York showing a fine strike of 'COMMERCIAL ROOMS' in serif capitals across flap at back and a red 'SHIP' on front. Also an 1832 entire letter from Clarendon to Liverpool showing a rather faint strike of the circular-framed stamp at back	7.00	8.50
		<u>Transit Stamps</u>		
	479	1836 entire letter from Carthagena to London showing circular 'CARTHAGENA' with ornament in red and a circular-framed Kingston c.d.s. used as a transit mark. Also 1843 and 1844 entire letters from Panama to London, both showing Kingston c.d.s. transit marks, the first with 'PANAMA' circular stamp, the other with circular 'SOUTH AMERICA / VIA PANAMA'; and 1893 cover from Chile to British Guiana showing 'JAMAICA / TRANSIT' and also an 1819 entire letter from H.M.S. 'Iphigenia' at Port Royal showing rather feint 'JAMAICA / F' cds applied at Falmouth	15.00	19.00
		<u>British Adhesives used in Jamaica</u> This section of the RH Urwick collection is the most complete that we have offered, containing many of the finest items of the Eugene Ely, Bertram McGowan, Ernest Yates and other famous collections.		
img	480	KINGSTON 'A01': 1d. rose-red perf. 14, four copies used on a rather creased and damaged 1860 entire from Kingston to Morant Bay (see Photo)	12.00	7.50
img	481	KINGSTON 'A01': a pair, one creased by fold, used with 4d. rose on an 1860 entire letter from Kingston to London (see Photo)	10.00	7.50
	482	KINGSTON 'A01': 4d. rose-carmine (very clear strike) used with 4d. rose (not tied) on an 1859 cover front Clarendon to Kingston, the cover creased by fold	8.00	5.75
	483	KINGSTON 'A01': 4d. rose used on an 1859 local entire and 6d. lilac on an 1859 entire letter to England, both covers creased by folds. Also 4d. rose-carmine off paper, clearly cancelled but a little foxed	6.00	4.25
	484	KINGSTON 'A01': Duplex obliterations on 4d. rose, a single with wing margin and a fine pair used on 1859 and 1860 local covers, also 6d. lilac, a fine pair, one with wing margin, used on 1860 cover to Scotland, all covers creased by folds	10.00	6.50
	485	ANNOTTO BAY 'A28': 4d. rose clearly struck 'A28' on a large piece of 1859 entire showing the c.d.s. type P3 with date inverted	7.00	7.50
img	486	BATH 'A29': 6d. lilac, a fine pair tied by 'BATH' c.d.s. type P2 to an almost complete 1858 cover to England before the use of the 'A29' obliterator, and both cancelled 'A01' at Kingston in transit. Very rare (see Photo)	20.00	16.00
img	487	BATH 'A29': 4d. rose showing a very clear 'A29' on large piece of 1859 entire with c.d.s. type P2 (see Photo)	8.00	7.50
img	488	BLACK RIVER 'A30': 4d. rose-carmine, a pair, one with wing margin and a few perfs. missing, the other creased by paper fold, tied to a rather damaged Feb. 1859 local entire letter by a poorish but unmistakable strike of the 'BLACK RIVER' c.d.s. type P2 before the use of the A30 obliterator, and there is a second strike of the cds at back. Very rare (see photo on page 11)	14.00	10.50
img	489	BLACK RIVER 'A30': 1d. rose-red, a strip of four and a pair, one damaged, used on 1859 cover from Black River to Montego Bay and with the c.d.s. of both towns and of Savanna-La-Mar; one adhesive is fairly clearly cancelled 'A30', the others with only part strikes; the cover has a small inscription in red ink at foot (see photo on page 11)	9.00	4.50
	490	BLACK RIVER 'A30': 4d. rose, creased by paper fold and rather messily cancelled 'A30' on an 1859 local entire letter which shows the Black River c.d.s. at back	6.00	3.00
	491	BLACK RIVER 'A30': 6d. lilac, a little more clearly cancelled on a rather similar entire letter	5.00	4.00
img	492	BUFF BAY 'A32': 4d. rose tied by 'BUFF BAY' c.d.s. type P6 to a Feb. 1859 entire from Buff Bay to Spanish Town before the use of the 'A32' obliterator. The cover, which is creased by folds, also shows a 'TOO LATE' type TL1 and a Kingston transit datestamp, and the adhesive has also picked up a very light A01 obliteration. Very rare (see photo)	18.00	21.00
img	493	BUFF BAY 'A32': 6d. lilac with wing margin clearly cancelled 'A32' on almost complete 1859 entire to London which shows part of the 'BUFF BAY' c.d.s. at back and a Kingston transit mark (see Photo on page 11)	8.00	13.00
	494	CHAPELTON 'A33': 4d. rose (pin -hole) lightly cancelled 'A33' on 1859 local entire which shows Chapelton and Clarendon c.d.s. at back, the cover creased by fold	7.00	3.50

Robson Lowe sale of Dr R H Urwick Jamaica 29 May 1957

Img	Lot	Description	Est	Real
	495	DUNCANS 'A37': 6d. lilac cancelled 'A01' in transit at Kingston on an 1858 cover to London which shows a 'DUNCANS' c.d.s. type P2 on front, before the use of the 'A37' obliterator. The cover is creased by two folds	7.00	7.50
img	496	FALMOUTH 'A39': 4d. rose, a strip of three, one with wing margins, tied by clear 'A39' obliterations to an 1859 entire letter to Kingston with Falmouth c.d.s. at back. The cover is creased horizontally by a fold but is beautiful and rare (see Photo)	15.00	17.00
	497	FALMOUTH 'A39': a single clearly cancelled off piece; also 6d. lilac lightly but clearly cancelled on an 1859 cover to London from which the name of the addressee has been excised	7.00	8.00
img	498	GAYLE 'A41': 4d. rose-carmine tied by a light 'GAYLE' c.d.s. type P7 to a Feb. 1859 entire to Kingston before the use of the 'A41' obliterator; the adhesive has been over stamped 'A01' and there are Gayle and Kingston c.d.s. at back (see Photo)	10.00	7.50
img	499	GAYLE 'A41': 4d. rose lightly but very clearly cancelled 'A41' on an April 1859 entire to Kingston which shows Gayle and Kingston c.d.s. at back (see Photo)	14.00	23.00
	500	GOSHEN 'A44': 6d. lilac, a fine pair, one a little creased, tied by light 'AO 1' obliteration to an 1858 cover to Liverpool which shows 'GOSHEN' c.d.s. type P2 on front, prior to the use of the 'A44' obliterator	5.00	3.75
img	501	GOSHEN 'A44': 1d. rose-red (pair) and 4d. rose (corner defect) clearly cancelled 'A44' on 1859 entire to Kingston which also shows a Goshen c.d.s. on front (see Photo)	11.00	5.50
	502	GOSHEN 'A44': 6d. lilac with wing margin clearly but a little heavily cancelled on 1860 entire letter to Liverpool showing Goshen c.d.s. on front; the cover is creased horizontally by fold	6.00	3.00
	503	GOSHEN 'A44': 6d. lilac, another lightly struck on a large piece of 1859 entire which shows 'GOSHEN' c.d.s. type P2 alongside	5.00	5.25
	504	GRANGE HILL 'A45': 6d. lilac with wing margin tied by light 'A01' obliteration to an almost complete 1858 entire to London which shows on front the 'GRANGE HILL' type P2 c.d.s. with manuscript date inserted, before the use of the 'A45' obliterator	8.00	7.50
img	505	GRANGE HILL 'A45': 1d. rose-red (pair, one damaged) and 6d. lilac used together on an 1859 entire from Grange Hill to Kingston, the adhesives cancelled 'A45', not very clearly, but also tied by a rather heavy 'GRANGE HILL' type P2 c.d.s., some letters of which have penetrated the cover (see photo)	12.00	14.00
	506	GRANGE HILL 'A45': 4d. rose, a fine pair lightly but clearly cancelled 'A45' on an 1859 entire to Kingston which also shows the Grange Hill type P2 c.d.s. on front	16.00	12.00
img	507	GRANGE HILL 'A45': 1/- green off paper and showing a clear 'A45' obliteration, some perfs. clipped at foot but very rare. With R.P.S. certificate (see Photo on page 12)	20.00	29.00
img	508	HIGHGATE 'A47': 1d. rose-red, a very fine strip lightly and clearly cancelled 'A47' on 1859 entire letter from Whitehall, Highgate, to Kingston (see Photo)	20.00	21.00
img	509	HIGHGATE 'A47': 4d. rose showing a superb 'A47' strike on 1859 cover to Kingston; the Highgate c.d.s. at back shows the date sideways (see Photo on page 12)	9.00	17.00
img	510	HOPE BAY 'A48': 4d. rose showing a very fine heavy strike of the 'A48' obliterator on an 1859 cover to Kingston which shows the 'HOPE BAY' type P3 c.d.s. at back (see Photo on page 12)	15.00	21.00
img	511	LILLIPUT 'A49': 6d. lilac very clearly cancelled 'A49' on an 1859 entire to London with the 'LILLIPUT' type P7 c.d.s. very clearly struck alongside. The cover is creased by a horizontal fold and the date of reception in London is lightly inscribed in manuscript across the adhesive (see photo)	10.00	9.50
img	512	LUCEA 'A51': 4d. rose, a strip of three on Feb. 1859 entire to New York which shows the 'LUCEA' type P4 c.d.s., Kingston and St. Thomas transit marks and circular-framed 'STEAMSHIP/10'. The adhesives share a manuscript 'P.O. Lucea', before the use of the A51 obliterator, and are also lightly cancelled A01. The cover is creased vertically but is very rare (see photo)	25.00	16.00
	513	HIGHGATE 'A47': 4d. rose, a pair very clearly cancelled 'A51' on a considerably damaged 1859 entire letter to Spanish Town. Also a clearly cancelled single off. piece	8.00	8.00
	514	MANCHIONEAL 'A52': 4d. rose, slightly damaged and lightly but unmistakably cancelled 'A52' on large part of 1859 entire from which another adhesive has come adrift	5.00	4.50
img	515	MANDEVILLE 'A53': 4d. rose clearly cancelled 'A53' on an 1859 entire letter from May Hill to Kingston which shows the 'MANDEVILLE' type P7 c.d.s. across the flap at back. The cover is a little creased (see Photo on page 16)	12.00	10.00

Robson Lowe sale of Dr R H Urwick Jamaica 29 May 1957

Img	Lot	Description	Est	Real
img	516	MANDEVILLE 'A53': 4d. rose and 6d. lilac very clearly cancelled 'A53' on a rather stained 1860 cover to France which shows the Mandeville c.d.s. at back. The adhesives are also tied by a red circular-framed 'PD' and by the red London Paid c.d.s. The name of the addressee has been hidden by pen strokes (see photo on page 16)	15.00	14.00
	517	MAY HILL 'A54': 1d. rose-red (pair) and 4d. rose very fine and lightly cancelled 'A54' on an 1859 cover to Kingston which shows the 'MAY HILL' type P2 c.d.s. at back	15.00	16.00
img	518	MILE GULLEY 'A55': 6d. lilac with wing margin superbly struck 'A55' on large part of an 1859 entire and with the 'MILE GULLEY' type P7 c.d.s. alongside (see Photo)	12.00	22.00
img	519	MONEAGUE 'A56': 4d. rose with wing margin and initialled by the postmaster, clearly cancelled 'A56' on a rather torn 1859 entire to Kingston which also shows a rather poor strike of the 'MONEAGUE' type P3 c.d.s. (see Photo on page 16)	9.00	9.00
	520	MONTEGO BAY 'A57': 4d. rose fine and clearly cancelled 'A57' on a rather creased 1860 entire letter to Savanna-La-Mar which shows a Montego Bay c.d.s. at back	5.00	4.25
	521	MONTEGO BAY 'A57': 6d. lilac very clearly cancelled 'A57' on an 1859 cover to London and with Kingston transit mark	7.00	9.00
	522	MONTPELIER 'A58': 4d. rose, two copies cancelled 'A01' on an 1858 part entire to Kingston with 'Montpelier June 28th 1858' in manuscript at back and 'Paid 8d' in the same hand on front	8.00	5.00
	523	MORANT BAY 'A59': 4d. rose fairly clearly cancelled 'A59' but not tied to large part of 1859 entire which shows 'MORANT BAY' type P2 c.d.s.	7.00	5.75
	524	OCHO RIOS 'A60': 4d. rose lightly and clearly cancelled 'A60' but not tied except by the impression of the obliterator which shows through to the back, on 1859 entire to Kingston which shows the 'OCHO RIOS' type P3 c.d.s. at back	8.00	9.00
img	525	OLD HARBOUR 'A61': 4d. rose with wing margin showing a very clearly struck 'A61' on a rather stained 1859 entire to Clarendon which shows the type P7 c.d.s. of Old Harbour and Clarendon at back (see Photo)	14.00	12.00
	526	PLANTAIN GARDEN RIVER 'A62': 4d. rose tied to small piece by a Feb. 1859 strike of the type P5 c.d.s. and also lightly cancelled 'A01', perms. clipped at left. Also another, off piece, with a part strike of 'A62'	6.00	4.25
	527	PLANTAIN GARDEN RIVER 'A62': 4d. rose fairly well struck 'A62' and tied to 1859 entire to Kingston; the cover is creased horizontally	8.00	5.50
img	528	PORT ANTONIO 'A64': 1d. rose-red, four copies comprising a severed block lightly cancelled 'A64' on an 1859 entire letter to Kingston which shows a part strike of the 'PORT ANTONIO' type P3 c.d.s. on front. The cover is creased horizontally (see Photo)	20.00	24.00
img	529	PORT MORANT 'A65': 4d. rose with manuscript 'Port Morant' and 'A01' obliteration on Feb. 1859 entire to Kingston which shows the 'PORT MORANT' type P3 c.d.s. at back, before the use of the 'A65' obliterator (see Photo)	9.00	8.00
	530	PORT MORANT 'A65': 4d. rose with wing margin lightly cancelled 'A65' on an 1859 entire to Kingston which has the Port Morant c.d.s. alongside. The cover is creased horizontally	10.00	9.50
img	531	PORT MARIA 'A66': 4d. rose clearly cancelled 'A66' on an almost complete 1859 entire to Kingston which has the 'PORT MARIA' type P3 c.d.s. alongside (see Photo)	11.00	15.00
img	532	PORUS 'A68': 1d. rose-red, a strip of three and single clearly cancelled 'A68' on an 1859 entire to Kingston which has the 'PORUS' type P5 c.d.s. at back. The single stamp is additionally lightly cancelled 'A01' and the cover is creased horizontally (see photo)	22.00	23.00
	533	PORUS 'A68': 4d. rose lightly cancelled 'A68' on an 1859 entire to Kingston which shows the 'PORUS' type P5 c.d.s. at back. The cover is creased horizontally	10.00	9.00
	534	RAMBLE 'A69': 6d. lilac clearly but a little messily cancelled 'A69' on an 1859 entire to London which shows the 'RAMBLE' type P7 c.d.s. alongside	8.00	15.00
img	535	RIO BUENO 'A70': 1d. rose-red (pair) and 4d. rose fine and lightly cancelled 'A01' on a Feb. 1859 entire to London which shows the 'RIO BUENO' type P3 c.d.s. alongside, before the use of the 'A70' obliterator. The cover is creased horizontally but is charming and rare (see photo)	16.00	17.00
img	536	RODNEY HALL 'A71': 1d. rose-red, a pair and adjoining strip of four clearly cancelled 'A71' on an 1859 entire to Clarendon which shows the 'RODNEY HALL' type P6 c.d.s. alongside the adhesives, two of which are holed by worms and two creased by folds but otherwise fine condition (see photo)	22.00	24.00

Robson Lowe sale of Dr R H Urwick Jamaica 29 May 1957

Img	Lot	Description	Est	Real
	537	ST. DAVID 'A72': 4d. rose with wing margin clearly cancelled 'A72' on large part of 1859 entire to Kingston which shows the 'ST DAVID' type P2 c.d.s. at back	7.00	10.50
	538	ST. ANNS BAY 'A73': 6d. lilac, a pair, one with clipped wing margin, tied to small piece by 'ST ANNS BAY' type P3 c.d.s. of Feb. 1859 and by 'A01' obliterations, before the use of the 'A73' obliterator	10.00	7.00
img	539	ST. ANNS BAY 'A73': 4d. rose, pair, one crossed by light pen stroke, and 6d. lilac (clipped wing margin), all clearly cancelled 'A73' on an almost complete 1859 entire to Bremen. On front there is a reversed impression of the St. Arms Bay c.d.s. from another letter (see photo on page 16)t	25.00	15.00
	540	ST. ANNS BAY 'A73': 6d. lilac, defective but lightly and clearly tied to an 1859 entire letter to London showing the St. Arms Bay c.d.s. at back	5.00	4.75
	541	SALT GUT 'A74': 6d. lilac with clipped wing margins tied by two clear but overlapping strikes of the 'A74' to an almost complete 1859 entire to Kingston which shows a 'SALT GUT' type P7 at back	12.00	11.50
img	542	SAVANNA-LA-MAR 'A75': 6d. lilac, a strip, one with wing margin and damaged, tied by two fair strikes of the 'SAVANNA-LA-MAR' type P2 of Feb. 1859 and 'A01' obliterations to an entire to London, before the use of the 'A75' obliterator. The cover is creased and the defective stamp is dated in manuscript on reception (see photo on page 15)	10.00	8.00
	543	SAVANNA-LA-MAR 'A75': 4d. rose, a pair, one with wing margin, not very clearly but unmiss- takably cancelled 'A75' on an almost complete undated entire to Kingston	7.00	3.50
	544	SAVANNA-LA-MAR 'A75': 4d. rose, a pair, one defective, sharing a light 'A75' obliteration on an 1859 entire letter from Savanna-La-Mar to Kingston. The cover is creased horizontally and there is another strike of the 'A75' at back	5.00	2.50
	545	SAVANNA-LA-MAR 'A75': 6d. lilac showing a superbly struck 'A75' on an 1859 entire to London with Savanna-La-Mar c.d.s. at back; the cover is creased horizontally and has been initialled by the receiver across the wing margin of the adhesive	9.00	10.50
img	546	SPANISH TOWN 'A76': 1d. rose-red (pair) and 4d. rose-carmine, all with the paid mark of Spanish Town and with 'A01' obliterations on a cover to London which shows the 'SPANISH TOWN' type P2 c.d.s. of Feb. 1859 on front, before the use of the 'A76' obliterator. The 1d adhesives are also tied by the red London receiving stamp but the name of the addressee has been inked out rather untidily (see photo on page 15)	17.00	16.00
img	547	SPANISH TOWN 'A76': 6d. lilac off piece and showing a good strike of the '1' paid mark of Spanish Town (see Photo on page 16)	5.00	8.00
	548	SPANISH TOWN 'A76': 1d. rose-red, a fine strip with 'A76' obliterations on an 1860 cover to Bath, a little soiled but showing Spanish Town c.d.s. on front	12.00	11.50
	549	SPANISH TOWN 'A76': 4d. rose tied by clear 'A76' obliteration and parallel pen-strokes to an almost complete 1859 entire from Spanish Town to Kingston	5.00	5.00
	550	SPANISH TOWN 'A76': 4d. rose very clearly struck 'A76' on large piece of 1859 entire which shows the Spanish Town type P2 c.d.s.	4.00	6.00
	551	VERE 'A78': 6d. lilac (corner defective) tied by a fair 'A78' and also by British numeral obliteration to an 1859 re-directed cover to England which shows the 'VERE' type P2 c.d.s. at back	10.00	7.50
	552	An 1864 cover to England, a little damaged, from a Warrant Officer on board H.M.S. 'Shannon' at Port Royal, initialled by the C.O. and bearing 1d. rose-red cancelled on arrival in London	5.00	5.50
		<u>Adhesive Stamps</u> 1860-63 Watermark Pineapple		
	553	1860-63 Watermark Pineapple: Imperf. 1d., 2d., 4d., 6d. and perf. 14 1/- (crease), fine unused and over-printed 'SPECIMEN' in Nicholson's type 1	10.00	13.00
	554	1860-63 Watermark Pineapple: Perforated 1d. (tear), 3d. (2) and 1/- (crease) with 'Specimen' in manuscript, the last in red and vertically	7.00	0.00
	555	1860-63 Watermark Pineapple: 1d. pale blue, 1d. blue (a stained single and a pair with clipped wing margin), 2d. rose, 2d. deep rose, 3d. green (3), 4d. brown-orange and 6d. lilac (corner perf. short), fine unused but several slightly creased. Cat. £50	10.00	11.50
	556	1860-63 Watermark Pineapple: 1d., 2d. (2), 3d. (4), 4d. (3), 6d. (3) and 1/- (4), fine shades. Cat. 511/-	5.00	7.50
	557	1860-63 Watermark Pineapple: 1d. cancelled 'A29' and '201', 3d. cancelled 'A75', 4d. cancelled 'MILE GULLEY', 6d. cancelled 'A72', 'A75' and one with 'SAVANNA-LA-MAR' c.d.s. and one cancelled 'A52' and 'A60', all very clearly. Cat. 233/-	8.00	7.00

Robson Lowe sale of Dr R H Urwick Jamaica 29 May 1957

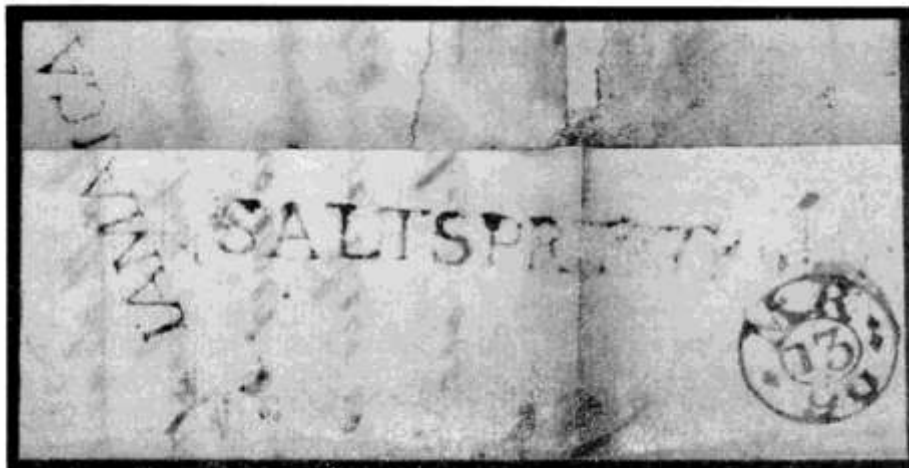
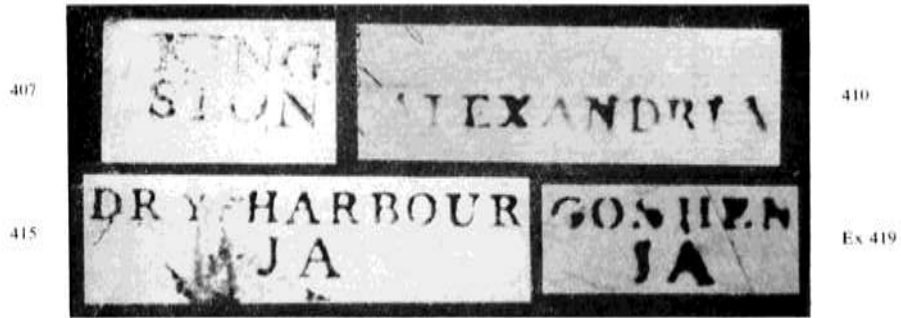
Img	Lot	Description	Est	Real
	558	1860-63 Watermark Pineapple: 1d. pale blue (strip of three), 1d. blue (strip of three cancelled 'A62'), 3d. green (strip of three cancelled 'A75'), 6d. lilac (strip of four) and 6d. deep purple (pair), mostly fine. Cat. 313/-	5.00	5.00
	559	1860-63 Watermark Pineapple: 1d. (two strips of three and a single), 2d. (2), 3d., 4d. (strip of five and two sing'es), 6d. (2) and 1/-, all cancelled 'A01' on 1861-67 entires or covers (9). Mostly fine and a rare and interesting lot	27.00	19.00
img	560	1860-63 Watermark Pineapple: 1d. pale blue, a mint block, centred slightly to left and an insignificant gum crease. Cat. 210/- (see Photo)	9.00	11.00
	561	1860-63 Watermark Pineapple: A diagonal bisect, a little rust stained but tied by light 'A75' obliterations to an 1867 wrapper marked 'Per Book Post' from Savanna-La- Mar to Spanish Town via Black River and Mandeville. Cat. over £18	9.00	10.00
	562	1860-63 Watermark Pineapple: Another diagonal bisect, a little rust stained and creased by folds, tied by 'A56' obliteration to an 1863 manuscript circular from Montego Bay to Kingston. Cat. £18	8.00	9.50
	563	1860-63 Watermark Pineapple: A similarly tied bisect, not creased, on part of an 1864 circular to Spanish Town; cancellation is not on bisected side but it is undoubtedly genuine. Cat. £18	7.00	6.00
img	564	1860-63 Watermark Pineapple: 1d. blue, a diagonal bisect tied by 'A3011 obliteration to a complete 2d. rose and to an 1868 official cover from Black River to Spanish Town (see Photo) 2	20.00	25.00
img	565	1860-63 Watermark Pineapple: 1d. pale blue and 2d. rose (strip of four and four singles), all cancelled 'A53' on an 1865 cover from May Hill to Germany; the adhesives also share a blue German transit stamp (see Photo)	11.00	16.00
img	566	1860-63 Watermark Pineapple: 1d. pale blue (strip of six) and 3d. green (vertical pair with wing margins) cancelled 'A78' on an 1865 entire from Vere to England (see Photo on page 22)	9.00	9.00
img	567	1860-63 Watermark Pineapple: 1d. blue (3) and 3d. green (3) placed alternately and cancelled 'A30' on an 1868 cover from Black River to London showing sorting mark on front., two adhesives are creased (see Photo)	8.00	4.50
img	568	1860-63 Watermark Pineapple: 2d. deep rose, a superb mint block, centred very slightly to S.W. Cat. £14 (see Photo)	12.00	12.50
	569	1860-63 Watermark Pineapple: 3d. and 1/- overprinted 'SPECIMEN' in Nicholson's type 5 and another 1/- with wing margin overprinted in type 4 upwards	7.00	4.75
	570	1860-63 Watermark Pineapple: 3d., 6d. and 1/-, wing-margined copies, each with two thin diagonal penstrokes, 'Specimens' or remainders	8.00	4.00
	571	1860-63 Watermark Pineapple: 3d. green cancelled 'A76' on 1866 entire from Spanish Town to Montego Bay, 3d. green and 1/- purple-brown (wing margin) cancelled 'A56' on 1867 entire from Montego Bay to Brussels and 1/- purple-brown cancelled 'A52' on 1864 c	8.00	6.50
img	572	1860-63 Watermark Pineapple: 4d. brown-orange, mint, centred slightly to foot. Cat. £12 (see Photo on page 20)	6.00	6.50
	573	1860-63 Watermark Pineapple: 4d. brown-orange, a vertical pair with wing margins cancelled 'A01' on an 1868 entire from Haiti to France via Kingston and London and showing fine impression of anchor in diamond of dots struck at back on seal	8.00	8.50
img	574	1860-63 Watermark Pineapple: 6d. deep purple, mint but previously mounted and centred slightly to left. Cat. £25 (see Photo on page 20)	12.00	11.50
	575	1860-63 Watermark Pineapple: 6d. A fine pair, centred to S.E. and with wing margin at left, cancelled 'A01' on an 1864 entire from Kingston to London	5.00	2.00
img	576	1860-63 Watermark Pineapple: 1/- yellow-brown, fine unused, centred slightly to foot. Cat. £17 (see Photo on page 20)	7.00	9.00
	577	1860-63 Watermark Pineapple: 1/- purple-brown, fine unused but centred to right. Cat. £1 2	4.00	4.75
img	578	1860-63 Watermark Pineapple: 1/- The '\$' variety, fine and lightly cancelled. Cat. £23 (see Photo on page 20)	14.00	14.00
	579	1860-63 Watermark Pineapple: 1/- A strip of six and single, one creased by fold and two damaged, lightly cancelled 'A01' on an 1865 entire from Kingston to Manchester	9.00	5.25
		<u>1870-83 Watermark Crown CC</u>		
	580	1870-83 Watermark Crown CC: ½d. (2), 1d. (2), 2d. (2), 3d. (2), 4d., 6d. (2), 1/- (2), 2/-, 51- and 1897 CA 5/-, very fine unused or mint shades. Cat. 732/-	12.00	15.00

Robson Lowe sale of Dr R H Urwick Jamaica 29 May 1957

Img	Lot	Description	Est	Real
	581	1870-83 Watermark Crown CC: ½d. (13), 1d. (14), 2d. (18, one with watermark inverted), 3d. (4), 4d. (5), 6d. (2), 1/- (4), 2/- and 5/-, mostly fine, some in pairs including a pair of 1d. cancelled 'E58' and other nice cancellations. Also three forgeries.	5.50	3.75
	582	1870-83 Watermark Crown CC: ½d. (strip of four), 1d. (strip of four and two pairs), 2d. (strips of seven, three, pair and single), 3d. (pair), 4d. (2), 6d. (pair and two singles) and 1/- used on fourteen covers, the first cancelled '640' on cover with 'MAY PEN' cds the last cancelled '193' on cover with 'COLD SPRING' cds and some other nice cancellations	10.00	11.50
	583	1870-83 Watermark Crown CC: 1d. claret (pair), 1d. blue (strip of three), 2d. deep rose (pair), 6d. mauve (pair) and 1/- dull brown (thinned pair), all mint but a few perfs. stained, Cat. 298/-	8.00	4.00
	584	1870-83 Watermark Crown CC: 1d. (three strips of four), 2d. (strip of six), 3d. (strip of five), 4d. and 6d. in strips of three and 1/- (strip of five), all fine; cancellations include 'A37', 'A38', 'A57', 'A75' and 'F96'. Cat. 197/-	6.00	4.25
	585	1870-83 Watermark Crown CC: 1d. pair cancelled 'A71', 2d. pair cancelled 'A42', 3d. cancelled 'G15', 4d. cancelled 'A77' and 'E58', 6d. cancelled 'A35' and a pair cancelled 'F95', 1/- cancelled 'G14' and another with oval-framed 'FRANCA'	5.00	4.75
	586	1870-83 Watermark Crown CC: 1d. blue and 2d. rose on 1879 and 1884 covers from Spanish Town to Kingston which have gone astray and show octagonal-framed 'RETURNED / LETTER BRANCH / JAMAICA' datestamps, 'ADVERTISED' and 'UNCLAIMED' cachets and oval 'RECORD OFFICE / JAMAICA' datestamps	5.00	7.00
img	587	1870-83 Watermark Crown CC: 2d. rose, a mint block (3 x 3), well centred, a faint gum crease. Cat. 338/- (see Photo on page 20)	12.00	6.50
img	588	1870-83 Watermark Crown CC: 2d rose A mint block (3 x 2). Cat. 225/- (see Photo on page 20)	8.00	6.50
	589	1870-83 Watermark Crown CC: 2d. (block of four cancelled 'A56'), 6d. (block of four and block of six ') and 1/- (block of four and block of eight), mostly fine. Cat. 298/-	7.00	5.75
img	590	1870-83 Watermark Crown CC: 3d. green, a mint strip showing plate number and marginal inscription at foot. Extremely rare (see Photo)	40.00	26.00
img	591	1870-83 Watermark Crown CC: 4d. red-orange, mint but heavily mounted and a faint gum crease. Cat. £10 (see Photo on page 20)	4.00	3.50
	592	1870-83 Watermark Crown CC: 4d A pair and two singles sharing an 'A76' obliteration on an 1880 cover from Spanish Town to England	5.00	5.00
img	593	1870-83 Watermark Crown CC: 1/- dull brown, the '\$' variety, lightly cancelled but centred to S.W. Cat. £12 (see Photo on page 20)	6.00	8.50
	594	1883-97 wmk. Crown CA 1d. (10) to 51- (3), fine unused or mint with scarce shades including the 1d. blue, 2d. rose and 4d. red-orange; the 2/- is perf. 121 and has Crown CC wmk. Cat. £25	6.00	7.00
	595	1883-97 wmk. Crown CA: ½d. (2), 1d. blue, 1d. carmine, 2d. rose (pair), 2d. grey, 2d. slate, 3d. sage-green, 3d. olive-green, 4d. red-orange, 4d. red-brown and 6d. yellow-orange, very fine unused or mint. Cat. £29	9.00	8.00
	596	1883-97 wmk. Crown CA: 1d. (two shades), 2d. slate, 1/- brown and 1889-91 1d., 2d. and 2'd. (two shades of each), all in fine unused or mint blocks. Cat. £9 40	4.00	4.50
img	597	1883-97 wmk. Crown CA: 4d. red-orange, mint, centred very slightly to right. Cat. £14 (see Photo on page 20)	6.00	7.00
	598	1883-97 wmk. Crown CA: 2d. (10) to 5/- and 1889-91 1d. to 2'd. (7), good to fine used with pairs and blocks, scarce shades and nice cancellations. Cat. 307/-	4.00	4.50
	599	1884-1912, various values to 2/ mostly later Queen's Heads, used on covers (29), postcards (2) and a piece; two 1894 covers show the red provisional 'JAMAICA PAID' datestamps and there are many other items of interest	6.00	12.00
	600	1890 'TWO PENCE/HALF-PENNY' on 4d., almost complete unused and used reconstructions of the first and second settings, the latter including two pairs and a block and examples of the 'PFNNY' and 'PFNNK' varieties both mint and used	15.00	18.50
	601	Ditto, four examples, one with double surcharge, used with two other adhesives on three covers	5.00	7.50
	602	1900 Llandoverly Falls 1d. imperf. plate proof in carmine on unwatermarked wove paper, very fine	8.00	12.50
	603	1900 Llandoverly Falls 1d. imperf. plate proof in orange-red on unwatermarked wove paper, smaller margins to previous and one corner marked in red	6.00	8.50

Robson Lowe sale of Dr R H Urwick Jamaica 29 May 1957

Img	Lot	Description	Est	Real
img	604	1901 Llandovery Falls 1d. die proof in ultramarine and black on thin wove paper with 7-8 mm. margins; beautiful and rare (see Photo)	12.00	26.00
	605	1900-10, a collection of Llandovery Falls and 'Arms' types with 'Specimen' copies and used blocks of the first, mint and used values to 5/- and seven examples of the 'SER. ET' variety on values to 2'd. Cat. over 553/-	11.00	10.00
	606	1905-11 Queen's Heads 3d. (13) to 2/- (3), a mint collection including the 4d. red-brown, 2/- Venetian red and other scarce shades. Cat. £26	8.00	10.00
	607	1905-11 Queen's Heads 3d. (5) to 2/- (3), a good used collection, also including the scarce shades. Cat. 369/-	5.00	3.50
	608	1905-11 Queen's Heads 4d red-brown, a mint block. Cat. £10	5.00	5.25
	609	1905-11 Queen's Heads 1/- brown, a mint block (6 x 2) with marginal inscription at foot. Cat. 270/-	7.00	3.25
	610	1905-11 Queen's Heads 1/- brown, the \$ variety, mint but slightly rust stained at back. Cat. £32	14.00	17.00
img	611	1905-11 Queen's Heads 1/- black on green, a mint vertical pair with serial number on top margin, the lower stamp the '\$' variety. Cat. £22 (see Photo)	14.00	16.00
	612	1911-19, a mint collection with K.E. V11 2d.. K.G. V 1d. to 5/- (2) with shades and paper varieties. and War Stamps including the 1916 '1½d' with 's' omitted in pair with normal 418/-	8.00	5.25
	613	A similar used collection including also 1919-21 ½d to 1/-, 1921-29 Script ½d. to 5/- (4) and 10/- (on piece) and a few later. Cat. 650/-	10.00	7.50
	614	1911-38 various values to 2/- used on covers (20) including two with KE. V11 2d and three with 1923 Child Welfare ½d (2) 1d (foxed) and 2½d ; cancellations include 1927 and 1938 Philatelic Exhibitions.	10.00	5.00
	615	1919-21 ½d to 10/- (centred to top), 1921-29 Script ½d(4) to 5/- (5) and 10/- (2), 1923 Child Welfare set and later KG V all mint with many shades. Cat. £50	14.00	14.50
	616	1919-21 Imperf. plate proofs on card of the 1½d, 2d., 4d., 1/-, 2/-, 5/- and 10/- in unissued colours and overprinted 'SPECIMEN'	14.00	20.00
	617	1919-21 imilar plate proofs of the 3d. and 3/- (close two sides), without 'SPECIMEN' and scarcer thus	5.00	9.00
img	618	1919-21 The unissued 6d. carmine and -slate-blue depicting the Proclamation Of Abolition of Slavery, superb mint and over' printed 'SPECIMEN'. Also the same stamp with Script wmk. similarly overprinted (see Photo)	40.00	44.00
	619	1938-49, a mint collection with K.G. V1 values to 10/. (2) and £1, 1945 Constitution set and later commemoratives but no Silver, Wedding £1 Cat. 145/-	4.50	4.00
	620	1938-49A similar but smaller used, collection. Cat. 114/-	3.00	1.50
	621	1950-56 various low values, mainly K.G. V1 1d. in multiples on covers (67), nearly all cancelled with oval, rubber handstamps in violet	8.00	9.50
	622	1938-56 values to 2/ mainly K.G., V1, used on covers (39), a few with oval rubber handstamps	5.00	0.00
	623	Postal Fiscals: Various values to 1/- (2), mostly used, including four fine covers. Also Official stamps, mint and used, including a cover, the 3d. Telegraph stamp used on cover and other items	7.00	10.00
	624	Cancellations: Numeral obliterations including the 'A', 'E', 'F' and 'G' series, mainly on the Q.V. 2d. rose, a few numerals and single letters	8.00	11.00
	625	Various numerals, mainly of the A series of various adhesives, mainly the 1889 bi-coloured 1d, all on covers (23), one cover with 'P.G. RIVER' and 'ALLEY', cd.s.	8.00	10.00
	626	Street letter boxes coloured cancellations and T.P.O.s on issues ' from 1889 including six covers or postcards	4.00	8.00
	627	Rectangular and oval rubber handstamps, a valuable collection including twelve Q.V., one on fine cover, the majority of the remainder being K.G V1 low values on covers or pieces	20.00	34.00





450



456



457



460
461

452

455
458



464
467



466



470

471



475

476

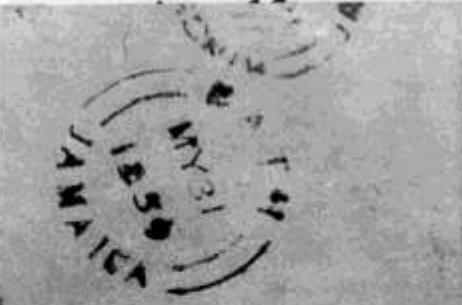
480



Herbert. Bart.

486

481



487

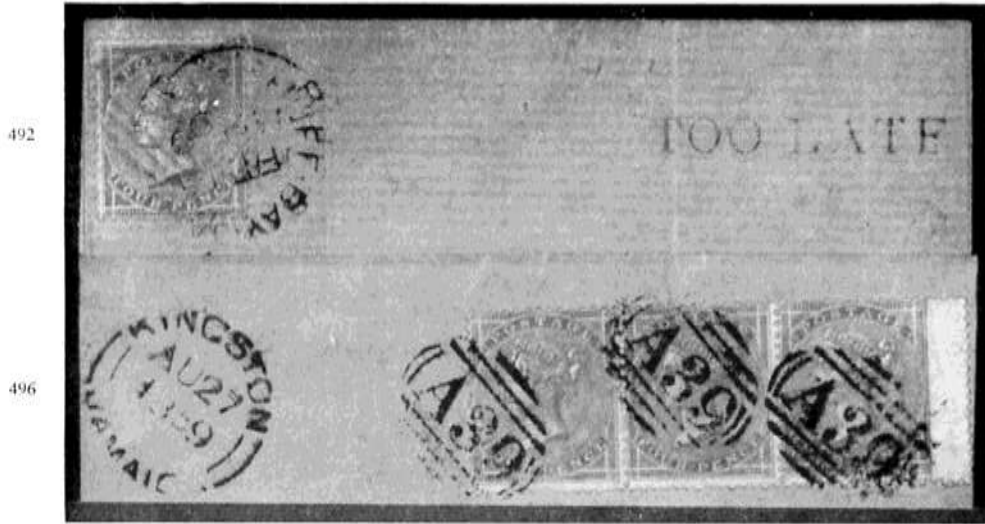
488 (pair)

493



489







512

542
546



515
519

525

516

529

547

531

539

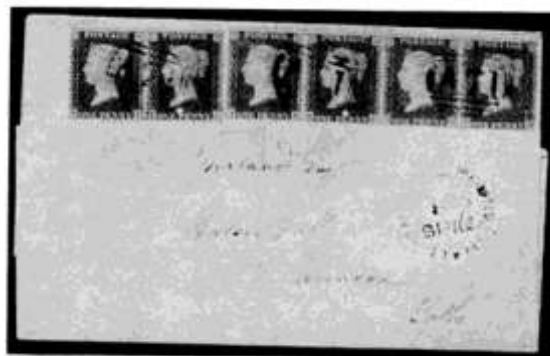


528

532



535



536



560

587

572

576

574

578

591

568

588

593

597



564



567

565



566



590



611



604



600