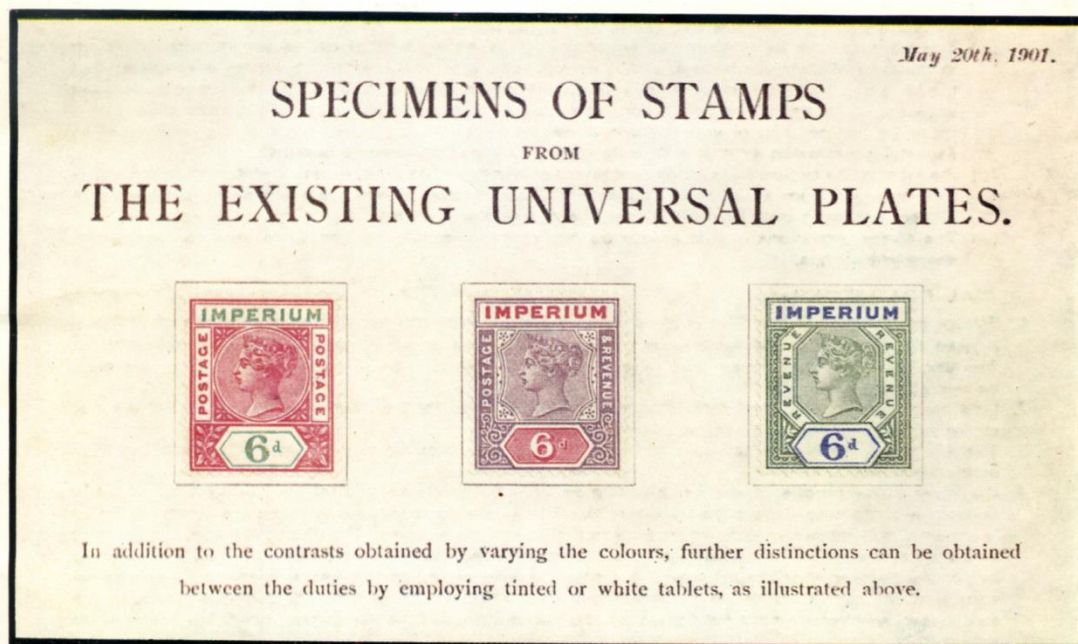


# THE DE LA RUE KEY PLATES

THURSDAY 15th NOVEMBER 1979  
at 11.00 hrs.



2001

ROBSON LOWE LTD.  
50 PALL MALL  
LONDON SW1Y 5JZ



Sale No. 4450

ISBN 0 85397 098 X

Catalogue £1.00

## DE LA RUE KEY PLATES ROBSON LOWE 15 NOVEMBER 1979 (SALE No. 1450)

The references made to page numbers and illustrations below, the descriptions in this sale refer to "The De La Rue Key Plates" brochure published by Robson Lowe Ltd., now available from our Literature Department, 39 Poole Hill, Bournemouth, Dorset BH2 5PX.

Price £3.25 including postage and packing.

Jamaica	1911	2d	2221, 2254, 2288, 2315, 2352
	1912-27	½d	2136, 2218, 2251, 2285, 2312, 2349
		1d	2138, 2219, 2252, 2286, 2313, 2350
		1½d	2220, 2253, 2287, 2314, 2351
		2d	2221, 2254, 2288, 2315, 2353
		2½d	2143, 2222, 2255, 2289, 2316, 2353
		3d	2146, 2223, 2256, 2290, 2317, 2354
		4d	2224, 2257, 2291, 2319, 2355
		6d	2151, 2227, 2259, 2293, 2321, 2357
		1s	2160, 2231, 2263, 2297, 2326, 2361
		2s	2233, 2265, 2297, 2329, 2363
		5s	2237, 2269, 2303, 2337, 2367

Photo	Lot	Tax	Jamaica?		Est	Real
				<b>1 Queen Victoria</b>		
front	2001	T		1901 (May 20th) card (139 x 52 m.m.) entitled "SPECIMENS OF STAMPS / FROM / THE EXISTING UNIVERSAL PLATES", bearing three 6d. Q.V. IMPERIUM perforated essays comprising "POSTAGE POSTAGE" (Die II) in carmine and blue-green (solid numeral) "POSTAGE & REVENUE" in purple & carmine (white numeral) and Revenue type in green and ultramarine (solid numeral). At foot is printed "In addition to the contrast obtained by varying, the colours, further distinctions can be obtained between the duties by employing tinted or white tablets, as illustrated above."	£500	1600.00
				<b>1.1 2c "POSTAGE POSTAGE"</b>		
	2002			2c "POSTAGE POSTAGE" 1888: Perforated Die 1: In green. in red and in blue. the last two with thin spots, the first two with small marks at top. all three on the solid numeral Note: These three essays have been, lifted from an Appendix sheet headed "Postage Stamps printed and overprinted in singly fugitive inks in the colours adopted by the Postal Union for the ½d., 1d. and 2½d duties" see page 3,	£250	210.00
Page 7	2003	T		2c "POSTAGE POSTAGE" 1891 Appendix sheet (205 X 318 m.m.) dated "March 13.91". headed "British Honduras Colour Scheme" and bearing six imperforate Die II essays, the first three with solid numeral and marked "2 Cents" for the essay in carmine-rose. "3 Cents" brown and "6 Cents" ultramarine, the last three with white numeral and marked "12 Cents" mauve and green, "24 Cents" yellow and green and "24 Cents alternative" in yellow and blue, each initialled "BIS" in red ink. Photo on page 7 Note: Described on page 5 and the top two essays illustrated on page 22.	£750	900.00
				<b>1.2 6d. (white numeral) "POSTAGE POSTAGE"</b>		
				<b>1.2.1 Die I imperforate</b>		
	2004			6d. (white numeral) "POSTAGE POSTAGE" Die I imperforate In red-brown and green, with 1890 St. Helena 1½d.	£150	375.00
Photo	2005	T		6d. (white numeral) "POSTAGE POSTAGE" Die I imperforate In grey and ultramarine. affixed to small piece.	£150	210.00
				<b>1.2.2 Die II imperforate</b>		
Photo	2006	T		6d. (white numeral) "POSTAGE POSTAGE" Die II imperforate In reddish purple and green, similarly affixed.	£175	210.00
	2007	T		6d. (white numeral) "POSTAGE POSTAGE" Die II imperforate In grey and brown, affixed to small piece	£150	190.00
	2008	T		6d. (white numeral) "POSTAGE POSTAGE" Die II imperforate In deep purple and black, similar essay., small mark on face	£125	160.00
	2009	T		6d. (white numeral) "POSTAGE POSTAGE" Die II imperforate In olive and black. a similar essay, small mark on tablet	£125	160.00

## DE LA RUE KEY PLATES ROBSON LOWE 15 NOVEMBER 1979 (SALE No. 1450)

Photo	Lot	Tax	Jamaica?		Est	Real
				Note: These six essays described above were prepared in 1897 for British Honduras. See foot of page 5.		
	2010			6d. (white numeral) "POSTAGE POSTAGE" In ultramarine. with 1898 Gambia 2½d.. 1896 St Helena 2½d., 1897 Seychelles 18c. and 1900 Seychelles 15c.	£150	425.00
	2011			6d. (white numeral) "POSTAGE POSTAGE" In brown and carmine, marginal, with 1893 Seychelles 45c.	£150	220.00
	2012			6d. (white numeral) "POSTAGE POSTAGE" In reddish purple and blue. with 1898 Gambia 3d. Also 1902 3d. deep purple and ultramarine shade	£175	220.00
	2013			6d. (white numeral) "POSTAGE POSTAGE" In brown and yellow. marginal	£150	210.00
				<b>1.3 1888 2c. "POSTAGE &amp; REVENUE" perforated</b>		
	2014			1888 2c. "POSTAGE & REVENUE" perforated In mauve and green, two examples, one with white numeral and the other with solid numeral, the last with a rounded corner	£250	325.00
Photo	2015	T		1888 2c. "POSTAGE & REVENUE" perforated In mauve and carmine, a similar. lot affixed to small piece with "BLS" in red ink between the essays.	£300	375.00
	2016	T		1888 2c. "POSTAGE & REVENUE" perforated In mauve and brown. a similar piece	£300	280.00
	2017			1888 2c. "POSTAGE & REVENUE" perforated In mauve and yellow, white numeral	£150	135.00
	2018			1888 2c. "POSTAGE & REVENUE" perforated In mauve and blue, white numeral.. faint crease at top and a little rubbed	£125	190.00
	2019			1888 2c. "POSTAGE & REVENUE" perforated In mauve, two examples, one with white numeral and the other with solid numeral	£250	210.00
	2020	T		1888 2c. "POSTAGE & REVENUE" perforated In green, two examples (affixed to small piece with "BLS" in red ink between the essays), one with white. one with solid numeral. fresh	£300	375.00
	2021	T		1888 2c. "POSTAGE & REVENUE" perforated In green and mauve, a similar piece	£300	325.00
	2022	T		1888 2c. "POSTAGE & REVENUE" perforated In green and blue, a similar piece	£300	300.00
	2023	T		1888 2c. "POSTAGE & REVENUE" perforated In green and brown, a similar. piece	£300	300.00
	2024	T		1888 2c. "POSTAGE & REVENUE" perforated In green and yellow, a similar piece. small marks on face and design touched by red ink	£275	280.00
	2025			1888 2c. "POSTAGE & REVENUE" perforated In green and carmine. white numeral. perforations clipped along foot and slight bends	£100	125.00
				<b>1.4 QV 6d Postage &amp; Revenue Pairs</b> Three pages of Imperium trials dated 29th November. 1897 contained the following titled "Stamps printed in Doubly Fugitive inks, the duty etc., being overprinted in Singly Fugitive inks". All these trials are in imperforate vertical pairs with the 6d. duty, the upper stamp with solid numeral and the lower with white figure. All but one are watermarked Crown CA, these (on yellow paper the large CA watermark covering two stamps. All trials have been removed from fronts the original three pages.		
				<b>1.4.1 First page on white paper</b>		
Photo	2026	T		QV 6d Postage & Revenue Pairs First row with Key Plate in purple: Duty in carmine.	£300	425.00
Back	2027	T		QV 6d Postage & Revenue Pairs duty in ultramarine,. slight rub on lower stamp.	£275	350.00
Back	2028	T		QV 6d Postage & Revenue Pairs duty in bright purple.	£300	280.00
	2029	T		QV 6d Postage & Revenue Pairs duty in emerald	£300	375.00
	2030	T		QV 6d Postage & Revenue Pairs duty in chestnut	£300	300.00

## DE LA RUE KEY PLATES ROBSON LOWE 15 NOVEMBER 1979 (SALE No. 1450)

Photo	Lot	Tax	Jamaica?		Est	Real
Back	2031	T		QV 6d Postage & Revenue Pairs Second row with Key Plate in green: Duty in carmine.	£300	440.00
	2032	T		QV 6d Postage & Revenue Pairs duty in ultramarine	£300	440.00
	2033	T		QV 6d Postage & Revenue Pairs duty in bright purple	£300	300.00
Back	2034	T		QV 6d Postage & Revenue Pairs - duty in chestnut.	£300	420.00
	2035			QV 6d Postage & Revenue Pairs - duty in chestnut., but on gummed unwatermarked paper	£350	325.00
	2036	T		QV 6d Postage & Revenue Pairs Third row with Key Plate in black: Duty in carmine. very minor rubbing	£300	400.00
	2037	T		QV 6d Postage & Revenue Pairs duty in ultramarine, similar very minor rubbing	£300	325.00
	2038	T		QV 6d Postage & Revenue Pairs duty in bright purple	£300	300.00
Back	2039	T		QV 6d Postage & Revenue Pairs duty in emerald.	£300	325.00
	2040	T		QV 6d Postage & Revenue Pairs: duty in chestnut	£300	325.00
				<b>1.4.2 Second page on yellow paper</b>		
Back	2041			QV 6d Postage & Revenue Pairs: First row with Key Plate in purple: Duty in red.	£300	300.00
Photo	2042			QV 6d Postage & Revenue Pairs: First row with Key Plate in purple: duty in black.	£300	280.00
	2043	T		QV 6d Postage & Revenue Pairs: First row with Key Plate in purple: duty in bright purple. small marginal thin	£275	300.00
	2044	T		QV 6d Postage & Revenue Pairs: Second Row with Key Plate in green: Duty in red, tiny thin on lower stamp	£275	280.00
Back	2045	T		QV 6d Postage & Revenue Pairs: Second Row with Key Plate in green: duty in bright purple. top stamp with two thin spots.	£250	280.00
Back	2046			QV 6d Postage & Revenue Pairs: Second Row with Key Plate in green: duty in black.	£300	280.00
	2047			QV 6d Postage & Revenue Pairs: Second Row with Key Plate in green: duty in chestnut	£300	300.00
	2048	T		QV 6d Postage & Revenue Pairs: Third row with Key Plate in black: Duty in red, tiny thin at foot	£275	280.00
	2049	T		QV 6d Postage & Revenue Pairs: Third row with Key Plate in black: duty in purple, small thin on lower stamp	£275	300.00
Back	2050	T		QV 6d Postage & Revenue Pairs: Third row with Key Plate in black: duty in emerald.	£300	300.00
Back	2051			QV 6d Postage & Revenue Pairs: Third row with Key Plate in black: duty in chestnut, thin spot on lower stamp.	£275	280.00
				<b>1.4.3 Third page with First three rows on buff and the fourth on red paper</b> Note: The "watermark is reversed on, the buff . paper.		
page 9	2052	T		QV 6d Postage & Revenue Pairs: First row on buff with Key Plate in purple: Duty in carmine.	£300	380.00
Back	2053	T		QV 6d Postage & Revenue Pairs: First row on buff with Key Plate in purple: duty in ultramarine, insignificant thin at foot.	£275	350.00
	2054	T		QV 6d Postage & Revenue Pairs: First row on buff with Key Plate in purple: duty in violet	£300	325.00
	2055	T		QV 6d Postage & Revenue Pairs: First row on buff with Key Plate in purple: duty in emerald	£300	425.00
	2056			QV 6d Postage & Revenue Pairs: First row on buff with Key Plate in purple: duty in bright purple	£300	280.00
	2057	T		QV 6d Postage & Revenue Pairs: First row on buff with Key Plate in purple: duty in chestnut	£300	300.00
Back	2058	T		QV 6d Postage & Revenue Pairs: First row on buff with Key Plate in purple: duty in black, tiny marginal corner scuff.	£300	425.00
	2059	T		QV 6d Postage & Revenue Pairs: Second row on buff with Key Plate in green: Duty in carmine	£300	425.00
	2060	T		QV 6d Postage & Revenue Pairs: Second row on buff with Key Plate in green: duty in ultramarine	£300	375.00



## DE LA RUE KEY PLATES ROBSON LOWE 15 NOVEMBER 1979 (SALE No. 1450)

Photo	Lot	Tax	Jamaica?		Est	Real
	2061	T		QV 6d Postage & Revenue Pairs: Second row on buff with Key Plate in green: duty in violet, lower stamp with thin spot and discolouration on face at lower right	£250	280.00
	2062	T		QV 6d Postage & Revenue Pairs: Second row on buff with Key Plate in green: duty in emerald	£300	425.00
	2063			QV 6d Postage & Revenue Pairs: Second row on buff with Key Plate in green: duty in bright purple	£300	280.00
back	2064			QV 6d Postage & Revenue Pairs: Second row on buff with Key Plate in green: duty in chestnut.	£300	280.00
	2065	T		QV 6d Postage & Revenue Pairs: Second row on buff with Key Plate in green: duty in black, thin spots	£250	325.00
Back	2066	T		QV 6d Postage & Revenue Pairs: Third row on buff with Key Plate in black or grey: Duty in carmine.	£300	325.00
	2067	T		QV 6d Postage & Revenue Pairs: Third row on buff with Key Plate in black or grey: duty in ultramarine	£300	325.00
	2068	T		QV 6d Postage & Revenue Pairs: Third row on buff with Key Plate in black or grey: duty in violet, tiny thin spots and marginal nick	£250	300.00
back	2069	T		QV 6d Postage & Revenue Pairs: Third row on buff with Key Plate in black or grey: duty in emerald.	£300	400.00
	2070	T		QV 6d Postage & Revenue Pairs: Third row on buff with Key Plate in black or grey: duty in bright purple, tipper stamp with slight thin	£275	325.00
	2071	T		QV 6d Postage & Revenue Pairs: Third row on buff with Key Plate in black or grey: duty in chestnut	£300	300.00
	2072	T		QV 6d Postage & Revenue Pairs: Third row on buff with Key Plate in black or grey: duty in black	£300	325.00
back	2073	T		QV 6d Postage & Revenue Pairs: Fourth row on red paper with Key Plate in purple: duty in black. lower stamp with mark across value.	£275	425.00
page 9	2074	T		QV 6d Postage & Revenue Pairs: Fourth row on red paper with Key Plate in purple:, duty in red. faint mark across top of lower stamp.	£300	325.00
Back	2075			QV 6d Postage & Revenue Pairs: Fourth row on red paper with Key Plate in purple: duty in black.	£300	475.00
Back	2076	T		QV 6d Postage & Revenue Pairs: Fourth row on red paper with Key Plate in purple: duty in red.	£300	475.00
				<b>1.5 6d (White numeral) "POSTAGE &amp; REVENUE"</b>		
				<b>1.5.1 Imperforate on unwatermarked paper</b>		
Photo	2077			6d (White numeral) "POSTAGE & REVENUE": Imperforate on unwatermarked paper: Key Plate in purple: duty in green, fresh mint, slight corner bend.	£175	150.00
	2078			6d (White numeral) "POSTAGE & REVENUE": Imperforate on unwatermarked paper: Key Plate in purple: duty in green, fresh, another example. not as fresh with Leeward Is, Sierra Leone, Zululand, Q.V. ½d. values and Grenada 6d.	£150	150.00
	2079			6d (White numeral) "POSTAGE & REVENUE": Imperforate on unwatermarked paper: Key Plate in purple: duty in carmine. fresh mint	£175	210.00
	2080			6d (White numeral) "POSTAGE & REVENUE": Imperforate on unwatermarked paper: Key Plate in purple: duty in carmine, another example, not as fresh and with issued Grenada and Zululand 1ds	£150	150.00
	2081			6d (White numeral) "POSTAGE & REVENUE": Imperforate on unwatermarked paper: Key Plate in purple: duty in yellow with Northern Nigeria 2d.	£150	180.00
	2082			6d (White numeral) "POSTAGE & REVENUE": Imperforate on unwatermarked paper: Key Plate in purple: duty in ultramarine with Zululand 2½d.	£150	140.00

## DE LA RUE KEY PLATES ROBSON LOWE 15 NOVEMBER 1979 (SALE No. 1450)

Photo	Lot	Tax	Jamaica?		Est	Real
	2083			6d (White numeral) "POSTAGE & REVENUE": Imperforate on unwatermarked paper: Key Plate in purple: duty in ultramarine. fresh mint. slight corner crease	£150	145.00
	2084			6d (White numeral) "POSTAGE & REVENUE" Imperforate on unwatermarked paper: Key plate in green: duty in black, fresh mini	£175	180.00
	2085			6d (White numeral) "POSTAGE & REVENUE" Imperforate on unwatermarked paper: Key plate in green: duty in ultramarine, tiny thin, slight crease and green discoloured	£50	100.00
	2086			6d (White numeral) "POSTAGE & REVENUE": Imperforate on unwatermarked paper: Key Plate in green: duty in mauve. fresh mint	£175	
	2087			6d (White numeral) "POSTAGE & REVENUE": Imperforate on unwatermarked paper: Key Plate in green: dirty in brown, fresh mint	£175	155.00
	2088			6d (White numeral) "POSTAGE & REVENUE": Imperforate on unwatermarked paper: Key Plate in green: duty in red	£200	170.00
				<b>1.5.2 Imperforate on Crown CA paper</b>		
Photo	2089			6d (White numeral) "POSTAGE & REVENUE": Imperforate on Crown CA paper: Key plate in purple: duty in black and red paper, small mark on value tablet,	£150	145.00
	2090			6d (White numeral) "POSTAGE & REVENUE": Imperforate on Crown CA paper: Key plate in purple: duty in black and red paper, a similar trial but with WATERMARK SIDEWAYS	£200	170.00
	2091			6d (White numeral) "POSTAGE & REVENUE": Imperforate on Crown CA paper: Key plate in purple: duty carmine	£200	170.00
				<b>1.5.3 Perforated 14 on unwatermarked paper</b>		
Photo	2092			6d (White numeral) "POSTAGE & REVENUE": Perforated 14 on unwatermarked paper: Key Plate in purple, duty in ultramarine. fresh mint.	£175	145.00
Photo	2093	T		6d (White numeral) "POSTAGE & REVENUE": Perforated 14 on unwatermarked paper: Key Plate in purple: duty in ultramarine., unused and overprinted "SPECIMEN" (15.5 x 1.5 m.m.. Samuel D5).	£200	260.00
	2094			6d (White numeral) "POSTAGE & REVENUE": Perforated 14 on unwatermarked paper: Key Plate in purple: duty in carmine, fresh mint	£175	240.00
Photo	2095	T		6d (White numeral) "POSTAGE & REVENUE": Perforated 14 on unwatermarked paper: Key Plate in purple: duty in carmine unused and overprinted "SPECIMEN" (15.5 x 1.5 m.m.. Samuel DS), tiny corner thin.	£200	160.00
	2096			6d (White numeral) "POSTAGE & REVENUE": Perforated 14 on unwatermarked paper: Key plate in green, duty in carmine. some perforations clipped at foot, with British Honduras 50c.	£100	110.00
				<b>1.5.4 Solid Numerals</b>		
				<b>1.5.4.1 Imperforate on unwatermarked paper</b>		
Photo	2097			6d (White numeral) "POSTAGE & REVENUE": Solid Numerals: Imperforate on unwatermarked paper: Key plate in purple: duty in orange. fresh mint.	£175	140.00
	2098			6d (White numeral) "POSTAGE & REVENUE": Solid Numerals: Imperforate on unwatermarked paper: Key plate in purple: duty in black, mint but a slight crease with Grenada 8d.. Sierra Leone 9d. And Zululand 6d	£150	210.00
	2099			6d (White numeral) "POSTAGE & REVENUE": Solid Numerals: Imperforate on unwatermarked paper: Key plate in purple: duty in chestnut. slightly rubbed and mark at upper right. Used for Northern Nigeria 5d	£100	
	2100			6d (White numeral) "POSTAGE & REVENUE": Solid Numerals: Imperforate on unwatermarked paper: Key plate in purple: duty in violet, fresh mint	£175	130.00

Photo	Lot	Tax	Jamaica?		Est	Real
				<b>1.5.4.2 Imperforate on white watermarked CA paper</b>		
photo	2101			6d (White numeral) "POSTAGE & REVENUE": Solid Numerals: Imperforate on white watermarked CA paper: Key plate in purple: duty in emerald, with Grenada ½d.	£150	130.00
	2102			6d (White numeral) "POSTAGE & REVENUE": Solid Numerals: Imperforate on white watermarked CA paper: Key plate in purple: duty in carmine: with Sierra Leone 4d.	£150	130.00
				<b>1.5.4.3 Imperforate on buff watermarked CA (reversed) paper</b>		
page 11	2103			Key plate in purple: duty in black.	£150	130.00
	2104			Key plate in purple: duty in carmine, faint bend	£150	130.00
				<b>1.5.4.4 Imperforate on red watermarked CA paper</b>		
Page 11	2105			Key plate in purple: duty in black and with SIDEWAYS WATERMARK.	£200	260.00
				<b>1.5.4.5 Perforated 14 on unwatermarked paper</b>		
Page 11	2106			Key Plate in purple: duty in orange, fresh mint with Grenada 3d.	£175	140.00
	2107			Key plate in green: duty in orange, fine mint with Grenada 1/-	£175	150.00
				<b>1.6 1898 imperforate 6d. Trials prepared for the unissued Gold Coast £5</b>		
				(Described foot of page 10)		
				Note: The following twelve lots comprise two trials, separated acid each affixed to the same small piece, one has the coloured acid the other the uncoloured numeral.		
				<b>1.6.1 On white unwatermarked paper</b>		
	2108	T		In black and intense black affixed to piece marked "Appendix", dated "Febry 8th 1898" and with gummed label with typed "GOLD COAST" affixed	£300	280.00
Photo	2109	T		In black and brown-red.	£300	300.00
	2110	T		In black and mauve	£300	280.00
				<b>1.6.2 On yellow unwatermarked paper</b>		
	2111	T		In black and intense black	£300	300.00
	2112	T		In black and brown-red	£300	260.00
	2113	T		In black and mauve	£300	300.00
	2114	T		In green and brown-red, one with small mark on neck	£275	240.00
	2115	T		In green and mauve	£300	260.00
	2116	T		In green and green	£300	280.00
	2117	T		In mauve and brown-red	£300	280.00
	2118	T		In mauve and purple	£300	280.00
	2119	T		In mauve and green	£300	280.00
	2120	T		A single (with white numeral) in green and chestnut, lower left corner dis-coloured	£50	
				<b>1.7 1900 Imperforate 6d. trials prepared for Northern Nigeria</b>		
				(Described on page 11)		
Photo	2121	T		Appendix sheet ("A") (164 x 325 m.m.) dated "Jany 13 1900" bearing four columns of stamps, two headed Gold Coast with issued 1894 20/- (some perfs. clipped) and 1898 ½d. to 10/-, the complete ten values and two headed Northern Nigeria with Imperium 6d.s in the same colours as the Gold Coast stamps with ½d., 1d., 2d. (later issued for Gold Coast), 2½d., 5d., 6d., 1/-, 2/6d. and 10/- written alongside the first eight in issued colours, the 10/- in nearly the issued colour and with slight mark on face; the 5d. and 6d. have coloured, the remainder white numerals.	£1400	1200.00

Photo	Lot	Tax	Jamaica?		Est	Real
				Note. The following nine trials were also prepared on 13th January 1900 and the issued 10/- was chosen from this series. (Described) at foot of page 11)		
	2122	T		In mauve and blue green, two separate trials affixed to the same piece, one with coloured and the other with white numeral. some slight rubbing	£250	250.00
	2123	T		D In mauve and yellow-green, two similar. trials[s. similarly affixed, both rubbed	£200	180.00
	2124	T		In mauve and brown. a similar piece in similar condition	£200	210.00
	2125	T		In green and brighter green. a single with white numeral affixed to small piece, very slightly rubbed	£125	120.00
	2126	T		In green and yellow, a similar] single, some rubbing	£100	
	2127	T		In green and brown. a similar single affixed to piece marked "Appd for 101S duty EM 23/1". unrubbed	£175	190.00
				<b>1.8 Revenue Imperiums</b>		
	2128	T		1889 (November 13th) piece of tracing paper (c. 60 x 77 m.m.) bearing hand drawn 2c. in mauve and green with details picked out in Chinese white and partially backed in mauve and green and in the design of the issued Seychelles. See foot of page 12 and also refer to the first lot of this sale where a 6d. (solid numeral) in green and mauve is offered on card with Postage Postage and Postage and Revenue 6ds	£200	325.00
Photo	2129	T		1901 (October) four page printed "Report upon Stamping of Do(,Documents", on the last page is a perforated 6d. in mauve ,and deep carmine and with coloured numeral tied to the document by a dated red adhesive label inscribed "OVER EMBOSSED", the top part of the 6d, with hand-drawn "IMPERIUM" and adjacent frame. Said to have been prepared for the Cape of Good Hope. Note:This unique item is described in more details at top of page 12.	£200	340.00
				<b>2 King Edward VII</b>		
page 6	2129a			1901 (May 20th) card (139X82 mm.) entitled "DESIGNS FOR STAMPS/FROM/THE UNIVERSAL KEY PLATES" bearing three photographic essays with blank value tablets comprising "POSTAGE. POSTAGE", "POSTAGE & REVENUE" and "REVENUE REVENUE". At foot is printed "the UNIVERSAL KEY PLATES consist of a "POSTAGE" PLATE, a "POSTAGE AND REVENUE" PLATE and a "REVENUE" PLATE. The same Duty Overprint Plates are available for use with all the three Key Plates. A Colony having a Duty Plate and therefore have "POSTAGE", "POSTAGE AND REVENUE" or "REVENUE" stamps from the same Duty Plate".	£200	750.00
				There were five series of Imperium 6d. and "Nyasaland" type 1d. (for lower values) and £10 (for values above 5/-). All were imperforate and apparently all on paper watermarked Multiple Crown CA. The 6d. and £10 designs are inscribed "POSTAGE & REVENUE" and the 1d. "POSTAGE POSTAGE" (when issued all were altered to "POSTAGE REVENUE"). The 1d. and £10 designs are inscribed "THOS DE LA RUE & CO" in the country tablet.		
				<b>2.1 First Series dated 23rd November 1907</b>		
				This series comprised three "Appendix" sheets ("A", "B" & "C") with a left hand column comprising 26 Imperium 6d trials, marked alongside in manuscript with different values from "less than ¼d." to "£25". These were matched, generally with columns reversed, by a right hand column comprising twenty "Nyasaland" 1d. trials (for values up to 4/-) and six £10 trials (for 5/- to £25 values). All are affixed to small piece unless otherwise described.		



## DE LA RUE KEY PLATES ROBSON LOWE 15 NOVEMBER 1979 (SALE No. 1450)

Photo	Lot	Tax	Jamaica?		Est	Real
	2130	T		"Less than ¼d.": 6d. Imperiums trial in black and dull blue with white numeral, attached to large piece marked "Appendix A", dated "23rd Novr 1907" and with type written note regards this series	£200	280.00
	2131			ditto, 4d. 6d. in brown and violet. 1½d., 6d. its, orange and purple, 2d., 6d. in green and orange, all with white numeral and 2d", 1d. in orange and green 4d., 1d. in yellow and green, all lifted from piece and showing MCA watermark, creased and rubbed	£150	130.00
	2132			1d. Nyasaland trial in dull blue and black	£100	75.00
	2133			"4d": 6d. in brown and violet with white numeral. a trifle rubbed	£175	160.00
	2134			"2d." : 6d. in green with solid numeral, only very slight rubbing	£200	170.00
	2135			ditto, "1d." 6d. in red (small nick at top) and "2½d." 6d. in blue, all with solid numeral, lifted off piece and with MCA watermark. creased and rubbed	£75	60.00
	2136		J-KG5-½d	1d. in green	£100	80.00
	2137	T		"1d.": 6d. in red with solid numeral	£200	190.00
	2138		J-KG5-1d	1d. in red	£100	95.00
	2139	T		"1½d.": 6d. in yellow-orange and purple with white numeral	£200	190.00
	2140	T		"2d.": 6d. in grey-green and orange with white numeral	£200	180.00
	2141			1d. in orange and grey-green	£100	90.00
	2142	T		"2½d.": 6d. in blue with solid numeral. very slightly rubbed	£175	170.00
	2143		J-KG5-2½d	1d. in blue	£100	90.00
	2144	T		"3d.": 6d. in purple and deep purple on yellow with solid numeral	£200	200.00
	2145			ditto, lifted from piece, some slight rubbing and matched with Cayman Is. 3d.	£150	150.00
	2146		J-KG5-3d	1d. in deep purple and purple on yellow, some tiny marks on face	£100	100.00
	2147	T		"4d.": 6d. in green and amber, solid numeral	£200	190.00
	2148	T		"5d.": 6d. in green and brown, white numeral attached to large piece marked "Appendix B" and dated "23rd No@, 1907"	£200	280.00
	2149			1d. also in green and brown	£100	90.00
	2150	T		"6d.": 6d. in purple and bright purple, white numeral, some tiny insignificant rubs	£200	210.00
	2151		J-KG5-6d	1d. also in purple and bright purple, tiny mark it top	£100	85.00
	2152	T		"7½d.": 6d. in green and violet, white numeral,	£200	200.00
	2153	T		"8d.": 6d. in grey and carmine, solid numeral	£200	180.00
	2154			ditto. lifted from piece, the grey colour rubbed	£75	
	2155			1d. in carmine and grey, small mark at back of head	£100	60.00
	2156	T		"10d.": 6d. in green and carmine. solid numeral	£200	210.00
	2157			1d., also in green and carmine	£100	85.00
	2158	T		"1/-": 6d. in black (appears to be grey) and black on green, rubbing solid numeral, faint rubbing	£175	160.00
	2159			- ditto, lifted off piece and faded to appear grey-green	£75	135.00
	2160		J-KG5-1s	1d. in black, (appears to be grey) on green	£100	135.00
	2161	T		"1/6d.": 6d. in green and blue, white numeral	£200	190.00
	2162	T		2/-": 6d. in purple and green. white numeral. very slightly rubbed	£175	170.00
	2163			1d. in purple and green	£100	80.00
	2164	T		"2/6": 6d. in black (appears to be grey) and carmine on blile, solid numeral	£200	180.00
	2165			ditto, lifted from piece. creased and rather rubbed	£75	
	2166			1d. in black (appears to be grey,) and carmine on blue	£100	80.00
	2167	T		"3/-": 6d. in green and violet, solid numeral affixed by large piece marked "Appen dix C" and dated "23rd Nov., 1907"	£200	170.00
	2168			1d. in green and violet	£100	80.00
	2169	T		"4/-": 6d. in green and black, solid numeral	£200	
	2170	T		"51-": 6d. in purple and blue-green, solid numeral, very trifling blemishes	£200	210.00

## DE LA RUE KEY PLATES ROBSON LOWE 15 NOVEMBER 1979 (SALE No. 1450)

Photo	Lot	Tax	Jamaica?		Est	Real
	2171	T		"8/-": 6d. in purple and black on red, solid numeral, tiny mark on face	£200	210.00
	2172			ditto, lifted front piece and rather rubbed, minor bends	£150	120.00
	2173			£10. large size in black and purple on red, some small marks on face	£250	210.00
	2174	T		"10/-": 6d. in green and red	£200	210.00
	2175			- £10 also in green and red on green, the green very slightly rubbed	£250	130.00
	2176	T		"£1": 6d. in green and red on yellow. solid numeral	£200	230.00
	2177			- ditto, lifted from piece. slightly rubbed	£150	145.00
Photo	2178			- £10 also in green and red on yellow. Used for KG V and VI Bermuda and Nyasaland and for KGV Malta 51- values.	£250	475.00
photo	2179	T		"£5": 6d. in purple and blue. white numeral, small mark on face.	£200	210.00
page 26	2180			£10 also in purple and blue on blue, only very slightly rubbed.	£250	260.00
photo	2181			"£25": 6d. in purple and brown-orange, solid numeral	£200	230.00
				<b>2.2 Second Series dated 16th December 1907</b>		
				This series also comprised Three "Appendix:" Sheets ("1", "2" and "3") with a column of 26 Imperium 6d. trials affixed at left of each sheet and as in the first series, marked alongside in manuscript with values from "less than ¼d." to "£25". In this series only the 5d., 7½d., 8d., 10d., 1/6, 2/-, 8/- and £25 values were matched at right with "Nyasaland" 1d. trials. Most 1d. trials are in the reversed colours from the 6d. trials. The 8d. and £25 values were additionally matched by £10 trials.		
				All but the "less than ¼d.", ¼d., 1½d., 2d., 4d., 5/- 8/-, 10/- value tablet (changed to solid numeral) and £5 values have the same colours as the first series. All are affixed to small piece unless otherwise described.		
	2182	T		"Less than ¼d.", 6d. in black. white numeral, small mark across face. affixed to large piece marked "Appendix 1" and dated "16th December 1907"	£200	170.00
	2183	T		¼d: 6d in brown, white numeral	£20	170.00
	2184	T		"½d.": 6d. in brown white numeral	£200	280.00
	2185	T		"1d.": 6d. in red with solid numeral	£200	210.00
	2186	T		"1½d.": 6d. in yellow-orange, white numeral	£200	280.00
	2187			"2d.": 6d. in grey. white Mineral	£200	155.00
	2188	T		"2½d.": 6d. in blue, solid numeral	£200	180.00
	2189	T		"3d.": 6d. in purple and deep purple on yellow. solid numeral, a trifle rubbed	£175	180.00
	2190	T		"4d.": 6d. in green and red on green, solid numeral	£200	190.00
	2191	T		"5d.": 6d. in green and brown. white numeral attached to large piece marked 'Appendix 2' and dated "16th December 1907"	£200	75.00
	2192			- 1d. also in green and brown	£100	160.00
	2193	T		"6d.": 6d. in purple and bright purple, white numeral. a little rubbed	£175	200.00
	2194	T		"7½d.": 6d. in green and violet, white numeral	£200	80.00
	2195			- 1d. in violet and green	£100	170.00
	2196	T		"8d.": 6d. in grey and carmine, solid numeral	£175	70.00
	2197			- 1d. in carmine and grey, small marks on face	£75	180.00
	2198	T		"10d.": 6d. in green and carmine, solid numeral. slightly rubbed	£175	180.00
	2199			- 1d. also in green and carmine, small mark at lower right	£75	85.00
	2200	T		6d. in black (appears to be grey) and black on green, solid numeral, slight rubbing	£175	160.00
	2201	T		"1/6d.": 6d. in green and blue. white numeral	£200	190.00
	2202			1d. in blue and green	£100	100.00
	2203	T		"2/-": 6d. in purple and green, white numeral. slightly rubbed	£175	200.00
	2204			-- 1d. in purple and green	£100	75.00
	2205	T		"2/6d.": 6d. in black (appears to be grey) and carmine on blue. solid numeral	£200	210.00

## DE LA RUE KEY PLATES ROBSON LOWE 15 NOVEMBER 1979 (SALE No. 1450)

Photo	Lot	Tax	Jamaica?		Est	Real
	2206	T		"3/-": 6d. in green and violet, solid numeral affixed to large piece marked "Appendix 3" and dated "16th December 1907"	£200	210.00
	2207	T		"4/-": 6d. in green and black, solid numeral, small marks on face	£175	145.00
	2208	T		"5/-": 6d. in plirple and black on red. solid numeral, small marks on face	£175	145.00
	2209	T		"8/-": 6d. in purple and green, solid numeral, rather rubbed	£150	130.00
	2210	T		- 1d. and £10, both in green and purple and affixed to the same piece,some small marks on face	£350	320.00
	2211	T		10/-: 6d. in purple and blue on blue, white numeral, marks on face and slight rubbing	£150	145.00
	2212	T		"£1": 6d. in green and red on -yellow, solid numeral, slightly rubbed	£175	150.00
	2213	T		"£5": 6d. in green and amber, white numeral, small marks on face	£175	
	2214	T		"£25": 6d. in purple and brown-orange, solid numeral	£200	190.00
Photo	2215	T		- 1d. and £10. both in purple and brown-orange, the first with minor mark at one corner, the second with tiny rubs by crown.	£300	280.00
				<b>2.3 Third Series dated 31 st January 1908</b>		
				This series, too, comprised three sheets, each market "Universal Colour Scheme", bearing three left hand columns totalling 26 Imperium 6d. trials, all with solid numerals. Each, as before, was marked alongside in manuscript with values from "less than ¼d" to "£25." Each 6d. was matched with a 1d, "Nyasaland" trial in the same or in reversed colours, placed 68m.m. away. This formed three right hand columns and these 52 trials are offered below as matched pairs. The six values from 5/- to £25 are additionally matched by £10 "Nyasaland" trials. These are oftered as separate lots.		
				In this series the "less than ¼d.", ¼d., 1½d., 2d., 6d., 1/6 and £5 are in the same colours as in the second series but have a value tablet changed from white to solid numeral. The 4d., 5d., 7½d. (also with changed tablet), 8d., 10d., 2/-, 4/-, 5/-, 10/- (also with changed tablet), £1 and £25 values have their colours changed. For the first time the trials were numbered the 6d. Imperiums receiving Nos 1 to 26, the 1d. trials 27 to 52 and the £10 trials 53 to 58.		
				All but one are affixed to piece and the 5d., 7½d., 8d., 10d., 1/6, 3/-, 4/-, 8/-, £5 and £25 values are marked with a red ink cross indicating that it was these Stamps that the Crown Agents thought it advisable to change.		
Photo	2216	T		"Less than ¼d., No. 1" in black 6d., solid numeral matched with 1d. "Less than ¼d., No. 27" in black, both affixed to piece marked in manuscript "Universal Colour Scheme (Comprised in 3 sheets)", dated "31st January 1908" and endorsed "Approved W.H.M. 4/2/08". Also with type-written note explaining the purpose of this series.	£300	575.00
		T		Note: The sheet bearing she "less than ¼d" to 4d. values has a central fold which does not affect either trial.		
	2217	T		"¼d., No. 2" 6d. in brown, solid numeral with 1d. "¼d. No. 28"	£300	320.00
	2218	T	J-KG5-½d	"½d. No. 3". 6d. in green, solid numeral with 1d "½d., No. 29"	£300	320.00
	2219	T	J-KG5-1d	"1d. No. 4" 6d. in red, solid numeral with 1d. "1d. No. 30"	£300	320.00
	2220	T	J-KG5-1½d	1½d., No. 5" 6d, in yellow-orange, solid numeral with 1d. "1½d., No. 31"	£300	320.00
	2221	T	J-KE7-2D J-KG5-2d	"2d., No. 6" 6d. in grey, solid numeral with 1d. "2d., No. 32"	£300	280.00
	2222	T	J-KG5-2½d	"2½d., No. 7", 6d. in bright-blue, solid numeral with 1d., "2½d., No. 33"	£300	280.00
	2223	T	J-KG5-3d	"3d No. 8". 6d. in purple and deep purple on yellow, solid numeral with 1d. "3d., No. 34". both with small areas of rubbing		250.00

DE LA RUE KEY PLATES ROBSON LOWE 15 NOVEMBER 1979 (SALE No. 1450)

Photo	Lot	Tax	Jamaica?		Est	Real
				Note: This piece has pencilled "Paper yellow. Head d.f. purple Overprint s.f. purple" written as an example of the legend required by the Crown Agents to be printed against each colour. (See Fourth and Fifth Series).	£250	
	2224		J-KG5-4d	"4d., No. 9": 6d. in black (appears as grey) and red on yellow, solid numeral, very slightly rubbed with 1d. "4d., No. 35"	£300	280.00
	2225			a similar 6d. trial lifted off paper, a little rubbed	£175	150.00
	2226	T		"5d., No. 10": 6d. in purple and sage-green. solid numeral with 1d. "5d., No. 36"., also in purple and sage-green. both affixed to piece marked "Universal Colour Scheme (Comprised in 3 sheets)" and dated "31 <sup>st</sup> January 1908". This value is marked with a red ink cross indicating the advisability of changing this colour	£300	300.00
	2227	T	J-KG5-6d	"6d., No. 11": 6d. in purple and bright purple, solid figure with 1d. "6d., No. 37". in purple or bright purple	£300	300.00
	2228	T		"7½d., No. 12": 6d. in purple and yellow, solid numeral with 1d. "7½d., No. 38@' in purple and yellow, marked with red ink cross	£300	280.00
	2229	T		"8d., No. 13" 6d. in purple and black, solid numeral with 1d. "8d., No. 39" in black and purple	£300	280.00
	2230	T		"10d., No. 14": 6d. in purple and carmine, solid numeral with 1d. "10d., No. 40" in carmine and purple. both very slightly rubbed	£300	300.00
	2231	T	J-KG5-1s	"1/-, No. 15": 6d. in black (appears to be grey) and black on green, solid numeral, very slightly marked on face with 1d. "1/-, No. 41" in black (appears to be grey) and black on green	£300	300.00
	2232	T		"11/6, No. 16" 6d. in green and blue, solid numeral with 1d. "1/6, No. 42" in blue and green, a trifle rubbed. Marked with red ink cross	£300	320.00
	2233	T	J-KG5-2s	"2/-, No. 17": 6d. in purple and blue, solid numeral with 1d. "2/-, No. 43" in purple and blue on blue	£300	300.00
	2234	T		"2/6, No. 18": 6d. in black (appears, to be grey) and carmine on blue, solid numeral with 1d. "2/6, No. 44" in black (appears to be grey) and carmine on blue, both with slight marks on face	£300	300.00
	2235	T		"3/-, No. 19": 6d. in green and violet. solid numeral with 1d. "3/-, No. 45" in green and violet affixed to piece marked "Universal Colour Scheme (Comprised 3 sheets)" and dated "31 <sup>st</sup> January 1908". Marked with red ink cross	£300	320.00
	2236	T		"4/-, No. 20": 6d. in black (appears to be grey) and carmine, solid numeral with 1d. "4/-, No. 46" in carmine and black (appears to be grey), the last very slightly rubbed. Marked with red ink cross	£300	280.00
	2237	T	J-KG5-5s	"5/-, No. 21 ": 6d. in green and red on yellow, solid numeral with 1d. "5/-, No. 47 in green. and carmine on yellow	£300	280.00
	2238	T		"5/-, No. 53": £10 in green and carmine on yellow	£250	375.00
	2239	T		"8/-, No. 22": 6d. in purple and green, solid numeral with 1d. "8/-, No. 48". in green and purple, both very slightly rubbed. Marked with red ink cross	£300	280.00
	2240	T		"8/-, No. 54": £10 in green and purple	£250	260.00
	2241	T		"10/-, No. 23": 6d. in green and red on green, solid numeral with 1d. "10/-, No. 49" in green and carmine on green, small marks on face	£300	300.00
	2242	T		"10/-, No. 55": £10 in green and carmine on green	£250	400.00
	2243	T		"£1, No. 24": 6d. in purple and black on red. solid numeral with 1d., "£1, No. 50" in purple and black on red	£300	300.00
	2244	T		"£1, No. 56": £10 in purple and black on red	£250	500.00
	2245	T		"£5, No. 25": 6d. in green and amber, solid numeral with 1d., "£5, No. 51" in green and amber. Marked with red ink cross	£300	300.00
	2246	T		"£5, No. 57": £10 in green and amber	£250	240.00
Photo	2247	T		"£25, No. 26": 6d. in green and carmine, solid numeral with 1d. "£25, No. 52" in green and carmine, both with small rubs. Marked with red ink cross.	£300	300.00
Photo	2248	T		"£25, No. 58": £10 in green and carmine.		250.00

Photo	Lot	Tax	Jamaica?		Est	Real
				<b>2.4 Fourth Series with printed date March 1908 but submitted to the Crown Agents on February 24th 1908</b>		
				This series, headed "UNIVERSAL COLOUR SCHEME" was identical to the Third Series except that the trials had titles over each, printed in 4 pt. brown ink with details as to whether S.F. (singly fugitive) or D.F. (doubly fugitive) inks were used. Also a £10 value was now introduced.		
				Each of the three pages had the following two notes at top: "X" In the case of Stamps thus marked, the Crown Agents consider the adoption of a new plate necessary to guard against a fraudulent change of dirty. "OX" signifies that although manipulations would be quite possible, the Crown Agents do not think that the amount to be thus gained would be sufficient to tempt to fraud. They do not recommend new plates for these values.		
				The numbering of this series was as follows: 6d. Imperiums Nos. 1 to 27, 1d."Nyasaland" trials Nos. 28 to 54 and £10 trials Nos. 55 to 61.		
				These trials are as in the Third Series, offered as matched 6d. and 1d. Pairs, placed about 115 mm ("less than ¼d. to 4/- values) or 45 mm. (5/- to £25) apart. The seven £10 trials are offered as separate lots. All are on piece with their printed description above. A Fourth page, printed in the same style, was included in this series. This comprised 27 1d. "Nyasaland" trials in the same colours as Nos. 28 to 54 above but instead numbered Nos. 1 to 27. These are offered as separate lots, each on piece with their printed description above, at the end of the section. This colour scheme was intended for those Colonies which did not use Universal plates.		
photo	2249			"No. 1. Less than ¼d. S.F. Black" 6d. solid numeral matched with 1d. "No. 28 less than ¼d. S.F. 4 Black", both affixed to large piece with printed (in brown) "UNIVERSAL COLOUR SCHEME (COMPRISED IN 3 SHEETS)", dated "MARCH, 1908" and with "x" and "ox" notes printed below as described in the introduction to this Series. With typewriter note regarding this Fourth Series.	£300	360.00
	2250	T		"No. 2 ¼d. S.F. Brown", 6d. solid numeral with 1d. "No. 29 ¼d. S. F, Brown"	£300	340.00
	2251	T	J-KG5-½d	"No. 3 ½d. S.F. Green", 6d. solid numeral with 1d. "No. 30 ½d S.F. Green"	£300	320.00
	2252	T	J-KG5-1d	"No. 4 1d. S.F. Red", 6d. solid numeral with 1d. "No. 31 1d, S.F. Red"	£300	320.00
	2253	T	J-KG5-1½d	"No. 5 1½ d. S.F. Orange", 6d. solid numeral with 1d. "No. 32 1½d. S.F. Orange"	£300	320.00
	2254	T	J-KE7-2D J-KG5-2d	"No. 6 S.F. Grey" 6d. solid numeral with 1d. "No. 33 2d. S.F. Grey"	£300	320.00
	2255	T	J-KG5-2½d	"No. 7 2½d. S.F. Blue", 6d. solid numeral with 1d. "No. 34 2½d. S.F. Blue"	£300	300.00
	2256	T	J-KG5-3d	"No. 8. 3d. Yellow Paper. Duty S.F. Purple, Head, D.F. Purple", 6d. solid numeral with 1d., "No. 35. 3d. Yellow Paper, Border, D.F. Purple, Head S.F. Purple"	£300	300.00
	2257	T	J-KG5-4d	"No. 9 4d. Yellow Paper. Duty, S.F. Red, Head D.F. Black", 6d, solid numeral with 1d. "No. 36 4d. Yellow Paper, Border, S.F. Red, Head, D.F. Black"	£300	280.00
	2258	T		"No. 10 5d. Duty, S.F. Sage Green, Head, D.F. Purple", 6d. solid numeral with 1d. "No. 37 5d. Border, S.F. Sage Green Head, D.F. Purple", both rather rubbed and affixed to larger piece with printed "ox" and at foot "Doubly rather rubbed and affixed to larger piece with Fugitive - D.F. Singly Fugitive - .S.F." and "(1)"	£250	260.00



## DE LA RUE KEY PLATES ROBSON LOWE 15 NOVEMBER 1979 (SALE No. 1450)

Photo	Lot	Tax	Jamaica?		Est	Real
	2259	T	J-KG5-6d	"No. 11 6d. Duty S.F. Brilliant Rosa, Head, D.F. Purple", 6d. solid numeral with 1d. "No. 38 6d. Border, S.F. Brilliant Rosa, Head, D.F. Purple", affixed to large piece with printed (in brown) "UNIVERSAI, COLOUR SCHEME (COMPRISED IN 3 SHEETS)", dated "MARCH, 1908" and with "x" and "ox" recess printed below as described in the introduction to this Series. the 1d. with slightly rubbed head	£300	300.00
	2260	T		"No. 12 7½d. Duty, S.F. Amber, Head, D.F. Purple", 6d. solid numeral with 1d. "No. 39 7½d.. Border D.F. Amber, Head, D.F. Purple", with printed 'ox' at left.	£300	300.00
	2261	T		"No. 13 8d. Duty, S.F. Black, Head, D.F. Purple", 6d. solid numeral with 1d. "No. 40 8d.. Border D. F. Purple, Head, S.F. Black", the last with purple rubbed, with printed 'ox' at left.	£275	260.00
	2262	T		No. 14 10d. Duty, S.F. Red Head, D.F. Purple", 6d. solid numeral with 1d. "No. 41 . . 10d. Border, D.F. Purple, Head, S.F. Red", the last with purple rubbed. printed "ox" at left	£275	260.00
	2263	T	J-KG5-1s	"No. 15 1s. Green Paper, Duty, S.F. Black, Head, D.F. Black", 6d solid numeral with 1d "No. 42 1s. Green Paper. Border, S.F. Black Head, D. F. Black"	£300	340.00
	2264	T		"No. 16 1s. 6d. Dutv S.F. Blue. Head, D,F. Green" 6d. solid numeral with 1d. "No. 48 1s. 6d. Border, D.F. Green, Head S.F. Blue", the latter with the blue a little rubbed, With printed "x" at left	£300	300.00
	2265	T	J-KG5-2s	"No. 17 2s. Blue Paper Duty S.F. Blue, Head, D.F. Purple", 6d. solid numeral with 1d. "No. 44. 2s. Blue Paper, Border, S.F. Blue. Head, D.F. Purple"	£300	300.00
	2266	T		"No. 18 2s. 6d. Blue Paper. Duty, S.F. Red. Head, D.F. Black" 6d solid numeral with 1d. "No. 45 1s. 6d. Blue Paper. Border, S.F. Red. Head, D.F. Black"	£300	300.00
	2267	T		"No. 19 3s. Duty, S.F. Blue Purple. Head, D.F. Green", 6d. solid numeral with 1d. "No, 46 3s. Border, S.F, Blue Purple. Head, D.F. Green"	£300	300.00
	2268	T		"No. 20 4s. Duty, S.F. Red. Head, D.F. Black", 6d. solid numeral with 1d. "No. 47 . 4s. Border, D.F. Black, Head, S.F. Red", the border a little rubbed, affixed to larger piece with printed "x" at left and at foot "Doubly Fugitive D.F. Singly, Fugitive - S.F." and "(2)"	£275	260.00
	2269	T	J-KG5-5s	"No. 21 . 5s. yellow Paper. Duty, S.F. Red. Head, D.F. Green", 6d. Solid numeral with 1d. "No 48 . 5s. Yellow Paper, Border, S.F. Red. Head, D.F. Green", affixed to irregular large piece with printed (in brown) "UNIVERSAL COLOUR SCHEME (COMPRISED IN 3 SHEETS)", dated "MARCH, 1908" and with "x" and "ox" noted printed below as described in the introduction to this series	£300	400.00
Photo	2270	T		"No. 55 5s. Yellow Paper, Border, S,F, Red, Head, D.F. Green", £10.	£250	400.00
	2271	T		"No. 22 8s. Duty, S.F. Green. Head, D.F. Purple", 6d. solid numeral. a trifle rubbed with 1d. "No. 498s. Border, S.F. Purple. Head, D.F. Green", with printed "x" at 1,-ft		260.00
Photo	2272	T		"No. 56 8s. Border, S.F. Purple. Head, D.F. Green", £10.	£250	260.00
	2273	T		"No. 23 10s. Green, Paper. Duty, S.F. Red. Head, D.F. Green", 6d. solid numeral with 1d. "No. 50 10s. Green Paper. Border, S.F. Red. Head, D.F. Green", the former only a trifle rubbed	£300	260.00
	2274	T		"No. 5710s. Green Paper, Border, S.F. Red. Head, D.F. Green" £10	£250	425.00
	2275	T		"No. 24 £1 Red Paper. Duly, S.F. Black Head, D.F. Purple", 6d. solid numeral with 1d. "No. 51 £1 Red Paper. Border, S.F. Black. Head, D.F. Purple", some tiny marks on face		300.00
Photo	2276	T		"No. 58 £1 Red Paper. Border, S,F Black, Head, D.F. Purple" £10, very slight rubbing.	£250	425.00

## DE LA RUE KEY PLATES ROBSON LOWE 15 NOVEMBER 1979 (SALE No. 1450)

Photo	Lot	Tax	Jamaica?		Est	Real
	2277	T		"No. 25 £5. Duty, S.F. Amber. Head, D.F. Green", 6d. solid numeral with 1d. "No. 5- £5. Border, S.F. Amber. Head, D.F. With printed "x" at left Green", both very slightly rubbed		240.00
	2278	T		No. 59 £5. Border, S.F. Amber. Head, D.F. Green", £10, small mark on face	£250	220.00
	2279	T		"No. 26 £10. Duty, S.F. Blue. Head, D.F. Purple", 6d. solid numeral with 1d. "No. 53 £10. Border, S.F. Blue. Head, D.F. Purple", some tiny marks on face. With printed "x" at left £300		260.00
	2280	T		"No. 60 £10. Border, S.F. Blue. Head, D.F. Purple", £10, purple with some tiny marks	£250	
	2281	T		"No. 27 £25. Duty, S.F. Red. Head, D.F. Green", 6d. solid numeral. some coloured marks on value tablet. with 1d. "No. 54 £25. Border, S.F. Red. Head, D.F. Green" affixed to larger piece with printed "x" at left and at foot "Doubly Fugitive - D.F." and "Singly Fugitive - S.F."	£275	230.00
	2282	T		"No. 61 £25. Border, S.F. Red. Head, D.F. Green" £10 on piece with "(3)" at foot	£250	200.00
				<b>2.4.1.1 The fourth sheet (see Fourth Series introduction)</b>		
	2283	T		"No. 1 less than ¼d. S.F. Black" 1d. on large printed piece printed in brown ink "UNIVERSAL" (crossed through by two ink strokes) "COLOUR SCHEME", "We recommend the following Colour Scheme for adoption by the Colony. It would save trouble whenever new duties are required". "Stamps for Postage purposes only are printed in Singly Fugitive Inks. Stamps for Postage and Revenue are printed partly in Doubly Fugitive acid partly in Singly Fugitive inks for all values above 2½d." and dated "MARCH 1908", small mark on face	£100	85.00
	2284	T		"No. 2. ¼d. S.F. Brown", 1d.	£100	
	2285	T	J-KG5-½d	"No. 3 ½d. S.F. Green", 1d.	£100	85.00
	2286	T	J-KG5-1d	"No. 4. 1d. S.F. Red", 1d.	£100	85.00
	2287	T	J-KG5-1½d	"No. 5 1½d. S.F. Orange", 1d.	£100	
	2288	T	J-KE7-2D J-KG5-2d	"No. 6 2d. S.F. Grey", 1d.	£100	90.00
	2289	T	J-KG5-2½d	"No. 7 2½d. S.F. Blue", 1d.	£100	75.00
	2290	T	J-KG5-3d	"No. 8 3d. Yellow Paper. Border, D.F. Purple. Head, S.F. Purple", 1d.	£100	85.00
	2291	T	J-KG5-4d	"No. 9 4d. Yellow Paper. Border, S.F. Red. Head D.F. Black" 1d. on piece with printed "Doubly Fugitive - D.F."	£100	
	2292	T		"No. 10 5d. Border, S.F. Sage Green. Head, D.F. Purple", 1d. rather rubbed	£75	
	2293	T	J-KG5-6d	"No. 11 6d. Border, S.F. Brilliant Rosa. Head, D.F. Purple", 1d., a trifle rubbed	£100	
	2294	T		"No. 12 7d. Border, S.F. Amber. Head, D.F. Purple", 1d	£100	
	2295	T		"No. 13 8d. Border, D.F. Purple. Head, S.F. Black", 1d. purple rather rubbed	£75	
	2296	T		"No. 14 10d. Border, D.F. Purple. Head, S.F. Red", 1d. purple a little rubbed	£75	
	2297	T	J-KG5-1s J-KG5-2s	"No. 15 1s. Green Paper. Border, S.F. Black. Head, D.F. Black", 1d., some tiny marks on face at lower right	£100	70.00
	2298	T		"No. 16 1s. 6d. Border, D.F. Green Head, S.F. Blue" 1d., some rubbing at top	£75	
	2299	T		"No. 17 2s. Blue Paper. Border, S.F. Blue. Head, D.F. Purple" 1d.. some tiny marks on face	£100	
	2300	T		"No. 18 . 2s. 6d. Blue Paper. Border, S.F. Red. Head, 1).F. Black" 1d., some tiny marks on face. Affixed to piece showing printed "Singly Fugitive - S.F."	£100	

## DE LA RUE KEY PLATES ROBSON LOWE 15 NOVEMBER 1979 (SALE No. 1450)

Photo	Lot	Tax	Jamaica?		Est	Real
	2301	T		"No. 19 3s. Border, S.F. Blue Purple. Head, D.F. Green", 1d., the frame only very slightly rubbed	£100	
	2302	T		"No. 204s, Border, D.F. RlacA-, Head, S.F. Red", 1d., border rubbed	£75	
	2303	T	J-KG5-5s	"No. 21 5s. Yellow Paper. Border, S.F. Red. Head, D.F. Green", 1d.	£100	
	2304	T		"No. 22 8s. Border, S.F. Purple. Head, D.F. Green", 1d.	£100	
	2305	T		"No. 23 10s. Greeiz Paper. Border, S.F. Red. Head, D.F. Green" 1d. some small marks on face	£100	
	2306	T		"No. 24. £1. Red Paper. Border, S.F. Black. Head, D.F. Purple", 1d., some small rubs	£75	
Photo	2307	T		"No. 25. £5. Border, S.F. Amber, Head, D.F. Green", 1d.	£100	
Photo	2308	T		"No. 26£10. Border, S.F. Blue. Head, D.F. Purple", 1d., some tiny marks on face.	£100	
Photo	2309	T		"No. 27. £25. Border, S.F. Red. Head, D.F. Green", 1d.	£100	
				<b>2.5 Fifth Series, also with printed date March 1908, sent to the Crown Agents on April 6th</b>		
				This final Series with similar title, "O" and "OX" notes on the top of its three sheets, but with details printed 6 point in black) was identical to the Fourth Series except that the solid numerals on the 6d. Imperiums were changed to white numerals for the ¼d., 1½d., 2d., 3d. 5d., 6d., 8d., 1/-, 2/6, 4/-, 5/-. £1 and £ 10 values.		
				The lotting and placement of the various trials, unless described otherwise, is the same as in the Fourth Series except that as in this Series the face value is printed only at the left of each "pair" or "row", the seven £10 trials are affixed as a triplet with the matched 6d. and 1d. trials, the £10 being placed about 42 mm. away from the 1d.		
				In this Series the fourth sheet has a slightly different title. Each of the 27 1d. trials has the face value printed at left and these are, as before, offered as separate lots.		
				All but one item is on piece with printed details alongside.		
				Twelve copies of the Fifth Series Universal Colour Scheme were sent to the Crown, Agents on April 6th 1908 for despatch to British Honduras, Cayman Is., Fiji, Gold Coast, Leeward Is., Northern Nigeria, St. Lucia, St. Vincent, Sierra Leone, Straits Settlements and Virgin Is., themselves retaining a file copy. Thirty-five copies of the Colour Scheme (comprising the fourth sheet) were sent to the other Colonies.		
	2310	T		"Less than ¼d": 6d. solid numeral "No. 1 S.F. Black" with 1d. "No. 28 S.F. Black" both affixed to large piece with printed (in black) legend and date at top as in "Less than ¼d" in the Fourth Series, the 1d. with mark on face. With typewritten note regarding the Fourth and Fifth Series	£300	230.00
	2311	T		"¼d": 6d. white numeral "No 2 S.F. Brown" with 1d. "No. 29 S.F. Brown", the last with small mark on face	£300	260.00
	2312	T	J-KG5-½d	"½d": 6d. solid numeral "No 3. S.F, Green" with 1d. "No. 30 S.F. Green", the last with small mark on face	£300	260.00
	2313	T	J-KG5-1d	"1d": 6d. solid numeral "No. 4 S.F. Red" with 1d. "No. 31 S.F. Red"	£300	260.00
	2314	T	J-KG5-1½d	"1½d": 6d. white numeral "No. 5 S.F. Orange" with 1d. "No. 32 S.F. Orange"	£300	
	2315	T	J-KE7-2D J-KG5-2d	"2d": 6d. white numeral "No. 6 S.F. Grey" with 1d. "No. 33 S.F. Grey"	£300	260.00
	2316	T	J-KG5-2½d	"2½d": 6d. solid numeral "No. 7 S.F. Blue" with 1d. "No. 34 S.F. Blue"	£300	260.00
	2317	T	J-KG5-3d	"3d": 6d. white numeral, "No. 8. Yellow Paper, Duty, S.F. Purple. Head, D.F. Purple" with 1d. "No. 35 Yellow Paper. Border, D.F. Purple. Head, S.F. Purple", the last with tiny rub at upper left, the first with small mark on face	£300	260.00

## DE LA RUE KEY PLATES ROBSON LOWE 15 NOVEMBER 1979 (SALE No. 1450)

Photo	Lot	Tax	Jamaica?		Est	Real
	2318			6d. with "No. 8." legend at top, rubbed and soiled, also 6d. in purple and bright purple on yellow. solid numeral, rubbed and with fault at left, the last off piece	£75	
	2319	T	J-KG5-4d	"4d": 6d. solid numeral "No. 9. Yellow Paper. Duty, S.F. Red. Head, D.F. Black" with 1d. "No. 36. Yellow Paper. Border, S.F. Red. Head, D.F. Black"	£300	260.00
	2320	T		"5d": 6d. white numeral "No. 10 Duly, S.F. Sage Green,. Head, D.F. Purple", small marks on face with 1d. "No. 37 Border. S.F. Sage Green. Head, D.F. Purple" on piece with printed "ox", "D.F. - Doubly Fugitive", "S.F. - Singly Fugitii,e" and '(1)"	£275	260.00
	2321	T	J-KG5-6d	"6d": 6d. white numeral "No. 11. Duty, S.F. Brilliant Rosa. Head, D.F. Purple", rubbed with 1d. "No. 38. Border, S.F. Brilliant Rosa. Head, D.F. Purple", very slight rubbing, both affixed to large piece with legend printed as above "less than ¼d" in this Series	£250	220.00
	2322	T		7½d 6d. solid numeral "No. 12. Duty, S.F. Amber. Head, D.F. Purple", slightly rubbed with 1d. "No. 39. Border, S.F. Amber. Head, D.F. Purple" with 11 11 printed "ox" at left	£275	240.00
	2323			- 6d., on piece with "No. 12" legend above. rubbed	£100	
	2324	T		"8d": 6d. white numeral, "No. 13. Duty, S.F. Black. Head, D.F. Purple" with 1d. "No. 40. Border, D.F. Purple. Head, S.F. Black", the first with rubbed 11 11 spot and printed "ox" at left	£300	320.00
	2325	T		10d": 6d. white numeral "No. 14 Duty, S.F. Red,. Head, D.F. Purple" with 1d. "No. 41. Border, D.F. Purple. Head, S.F. Red", both slightly rubbed, with printed "ox" at left	£275	260.00
	2326	T	J-KG5-1s	"1s.": 6d. white numeral "No. 15. Green Paper. Duty, S.F. Black. Head, D.F. Black", a little rubbed with 1d. "No. 42. Greeii Paper Border, S.F. Black Head, D.F. Black. "	£275	260.00
	2327	T		"1s. 6d": 6d. solid numeral "No. 16. Duty, S.F. Blue. Head, D.F. Green," with 1d. "No. 43. Border, D.F. Green. Head, S.F. Blue". the last slightly rubbed, printed "x" at left	£300	260.00
	2328			6d. on piece with "No. 16" legend at top, rubbed	£100	
	2329	T	J-KG5-2s	"2s.": 6d. solid numeral "No. 17. Blue Paper. Duty, S.F. Blue. Head, D.F. Purple" with 1d. "No. 44. Blue Paper. Border, S.F. Blue. Head, D.F. Purple", the first a trifle rubbed	£300	280.00
	2330			6d. on piece with "No. 17" legend at top, rubbed and corner crease	£100	75.00
	2331	T		"2s. 6d": white numeral "No. 18. Blue Paper. Duty, S.F. Red. Head, D.F. Black", small mark on face with 1d. "No. 45. Blue Paper. Border, S.F. Red. Head, D.F. Black"	£300	300.00
	2332			6d. on piece with "No. 18" legend at top, rubbed and rather soiled, corner crease	£100	
	2333	T		"3s.": 6d. solid numeral, "No. 19. Duty, S.F. Blue Purple. Head, D.F. Green" with 1d. "No. 46. Border, S.F. Blue Purple. Head, D.F. Greeti", with printed 'x' at left	£300	300.00
	2334			6d. on piece with "No. 19" legend at top. rather rubbed and mark on face	£125	110.00
	2335	T		"4s.": 6d. white numeral "No. 20. Duty, S.F. Red. Head, D.F. Black" with 1d. "No. 47. Border, D.F. Black. Head, S.F. Red", the last with tiny marks on face, on piece printed "x" at left and "D.F. - Doubly Fugitive", "S.F. - Singly Fugitive" and "(2)" printed at foot	£300	
	2336			6d. on piece with "No. 20" legend at top, rather rubbed and faint crease	£125	
photo	2337	T	J-KG5-5s	"5s.": 6d. white numeral "No. 21. Yellow Paper. Duty, S.F. Red. Head, D.F. Green" with 1d. "No. 48. Yellow Paper. Border, S.F. Red. Head, D.F. Green" and £10 "No. 55. Yellow, Paper. Border, S.F. Red. Head, D.F. Green", all three affixed to large piece with legend printed as above "less than ¼d" in this series.	£550	550.00
	2338			- 6d. on piece with "No. 21" legend at top, slightly rubbed	£150	115.00
	2339			- £10 on piece with "No. 55" legend at top, rubbed and corner crease	£100	

## DE LA RUE KEY PLATES ROBSON LOWE 15 NOVEMBER 1979 (SALE No. 1450)

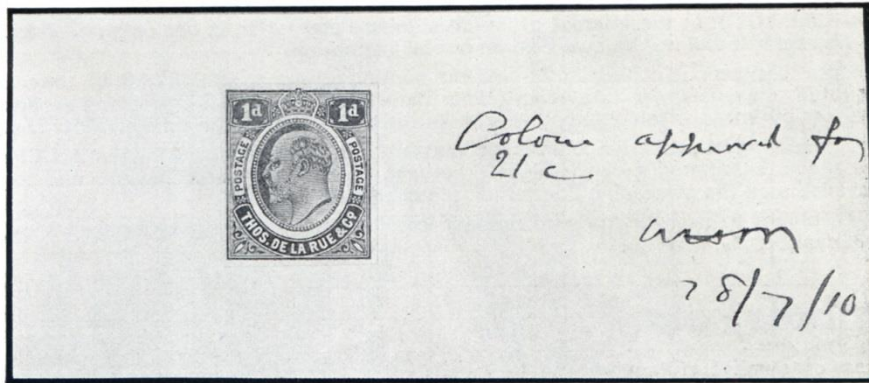
Photo	Lot	Tax	Jamaica?		Est	Real
	2340	T		"8s.": 6d. solid numeral "No. 22. Duty, S.F. Green,. Head, D.F. Purple", some small rubs with 1d. "No. 49. Border, S.F. Purple. Head, D.F. Green" and £10 "No. 56. Border, S.F. Purple. Head, D.F. Green", printed "x" at left	£500	475.00
	2341	T		"10s.": 6d. solid numeral "No. 23. Green Paper. Duty, S.F. Red. Head, D.F. Gren," with 1d. "No. 50. Green, Paper. Border, S.F. Red. Head, D.F. Green" and £10 "No. 57. Green Paper. Border, S.F. Red. Head, D.F. Green"	£550	525.00
	2342			6d. on piece with "No. 23" legend at top, only slightly rubbed	£175	240.00
	2343	T		£1": 6d. white numeral "No. 24. Red Paper. Duty, S.F. Black. Head, D.F. Purple" with 1d. "No. 51. Red Paper. Border, S.F. Black. Head, D.F. Purple" and £10 "No. 58. Red Paper. Border, S.F. Black. Head, D.F. Purple", each with tiny rubs	£550	480.00
	2344	T		£5": 6d. solid numeral "No. 25. Duty, S.F. Amber. Head, D.F. Green" with 1d. "No. 52. Border, S.F. Amber. Head, D.F. Green" and £10 "No. 59. Border, S.F. Amber. Head, D.F. Green". With printed "x" at left	£550	480.00
	2345	T		£10": 6d. white numeral "No. 26. Duty, S.F. Blue. Head, D.F. Purple" with 1d. "No. 53. Border, S.F. Blue. Head, D.F. Purple" and £10 "No. 60. Border, S.F. Blue. Head, D.F. Purple". With printed "x" at left	£550	550.00
	2346	T		£25: 6d. solid numeral "No.27. Duty, S.F. Red. Head, D.F. Green" with 1d. "No. 54. Border, S.F. Red. Head, D.F. Green" and £10 "No. 61. Border, S.F. Red. Head, D.F. Green", the first and last with small coloured marks on face, all three affixed to piece with printed "x" at left and printed "D.F. - Doubly Fugitive", "S.F. - Singly Fugitive" and "(3)" at foot	£500	525.00
				<i>2.5.1.1 The fourth sheet</i>		
	2347	T		"less than ¼d", 1d. "No. 1. S.F. Black" affixed to large piece printed in black ink "COLOUR SCHEMF Stamps for Postage purposes only are printed in Singly Fugitive Inks, Stamps for Postage and Revenue are printed partly in Doubly Fugitive and partly in Singly Fugitive Inks for all values above 2½d", "The colours marked D.F. can be produced in S.F. inks if required" and dated "MARCH, 1908". The suggested face value is printed to left of the trial	£100	80.00
	2348	T		¼d", 1d. "No 2. S.F. Brown"	£100	
	2349	T	J-KG5-½d	"½d". 1d. "No. 3. S.F. Green"	£100	
	2350	T	J-KG5-1d	"1d"" 1d. "No. 4 S.F. Red"	£100	
	2351	T	J-KG5-1½d	"1½d", 1d. "No. 5. S.F. Orange"	£100	
	2352	T	J-KE7-2D J-KG5-2d	"2d", 1d. "No. 6, S.F. Grey"	£100	90.00
	2353	T	J-KG5-2½d	"2½d", 1d. "No. 7. S.F. Blue"	£100	
	2354	T	J-KG5-3d	"3d.", 1d. "No. 8. Yellow Paper. Border, D.F. Purple. Head, S.F. Purple"	£100	
	2355	T	J-KG5-4d	"4d". 1d. "No. 9. Yellow Paper. Border, S.F. Red. Head, D.F. Black"	£100	
	2356	T		"5d", 1d. "No. 10. Border, S.F. Sage Green. Head, D.F. Purple"	£100	
	2357	T	J-KG5-6d	"6d", 1d. "No. 11. Border, S.F. Brilliant Rosa. Head, D.F. Purple", a trifle rubbed	£100	
	2358	T		7½d", 1d. "No. 12. Border, S.F. Amber. Head, D.F. Purple", the purple rubbed	£75	
	2359	T		8d". 1d. "No. 13. Border, D.F. Purple. Head, S.F. Black"		
	2360	T		10 "10d", 1d. "No. 14. Border, D.F. Purple. Head, S.F. Red", purple rather rubbed	£75	
	2361	T	J-KG5-1s	"1s.", 1d., "No 15. Green Paper. Border, S.F. Black. Head, D.F. Black", head a trifle rubbed	£75	



DE LA RUE KEY PLATES ROBSON LOWE 15 NOVEMBER 1979 (SALE No. 1450)

Photo	Lot	Tax	Jamaica?		Est	Real
	2362	T		"1s.6d.", 1d., "No. 16 Border, D.F. Green, Head, S.F. Blue"	£100	
	2363	T	J-KG5-2s	"2s", 1d. "No. 17. Blue Paper. Border. S.F. Blue. Head, D.F. Purple"	£100	
	2364	T		"2s. 6d.", 1d. "No. 18 Blue Paper. Brder, S.F. Red. Head, D.F. Black", affixed to piece showing "D.F. - Doubly Fugitive"	£100	
	2365	T		"3s", 1d. "No. 19. Border, S.F. Blue Purple. Head, D.F. Green", tiny rubs on frame	£100	
	2366	T		"4s." 1d., "No. 20. Border, D.F. Black. Head, S.F. Red", border with some tiny rubs	£100	
	2367	T	J-KG5-5s	"5s.", 1d., "No. 21. Yellow Paper. Border, S.F. Red. Head, D.F. Green"	£100	
	2368	T		"8s.", 1d., "No. 22. Border, S.F. Purple. Head, D.F. Green"	£100	
	2369	T		"10s", 1d.. "No. 23. Greeii Paper. Border, S.F. Red. Head, D.F. Green", tiny marks on frame	£100	
	2370	T		"£1" 1d., "No. 24. Red Paper, Border, S.F. Black. Head, D.F. Purple"	£100	
	2371	T		"£5", 1d. "No. 25. Border, S.F. Aniber. Head, D.F. Green", frame with tiny rubs at top	£100	
	2372	T		"£10", 1d. "No. 26. Border, S.F. Blue. Head, D.F. Purple", a trifle rubbed	£100	
	2373	T		"£25". 1d. "No. 27. Border, S.F. Red. Head, D.F. Green", tiny marks on face	£100	
				<b>2.6 Other King Edward VII Trials</b>		
Photo	2374			6d. Imperium white numeral, in blue, lifted oir piece and a little rubbed and soiled. Used for Cayman Is., Fiji, Gold Coast, Leeward Is., Northern Nigeria, St. Lucia and Sierra Leone 2½d. values and K.G. V Cayman 1s., Gold Coast, Leeward Is., Nigeria, St. Lucia and Sierra Leone 2½d. values, Fiji 2d. and 3d. and Seychelles 15c.		130.00
Photo	2375			- white numeral in green and red on green, lifted off piece and a trifle rubbed. Used for Cayman Is., Gold Coast (unissued) and Northern Nigeria 10/- values and Mauritius 10r. and K.G. V Cayman Is., Cold Coast, Nigeria and Northern Nigeria, 10/- values.	£175	125.00
page 1	2376			1d. "Nyasaland" trial in purple affixed to piece (c. 155 X 170 mm.) with Straits Settlements 4c. imperforate claret above, marked "Appet7dix", dated "22nd July 1910", the first endorsed "Colour approved for 21c. WHM 28/7/10", vertical crease does not affect either.	£125	95.00

END OF THE SALE



2376

May 20th, 1901.

## DESIGNS FOR STAMPS

FROM

## THE UNIVERSAL KEY PLATES.



The UNIVERSAL KEY PLATES consist of a "POSTAGE" PLATE, a "POSTAGE AND REVENUE" PLATE, and a "REVENUE" PLATE. The same Duty Overprint Plates are available for use with all the three Key Plates. A Colony having a Duty Plate can therefore have "POSTAGE," "POSTAGE AND REVENUE" or "REVENUE" Stamps from the same Duty Plate.

2129a

the 2nd, 1st, and 2nd, units, see page 2.



2003



2005



2006



2015



2026                      2042                      2052                      2074



2077                      2089                      2092                      2093                      2095



2097                      2101                      2103                      2105                      2106

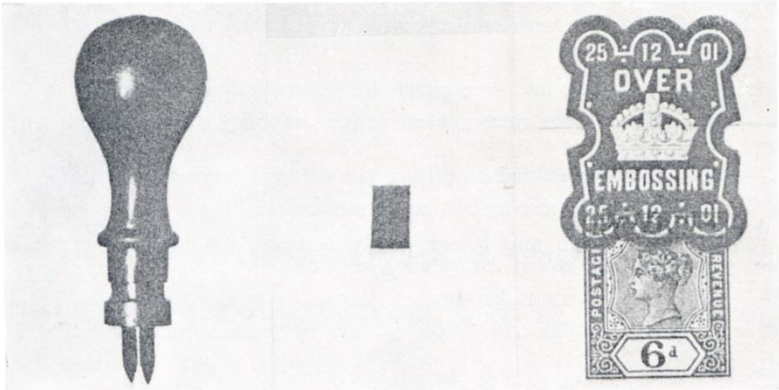


2109





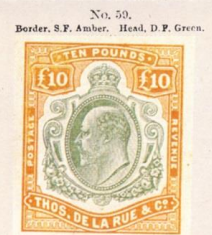
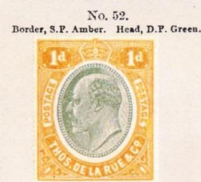
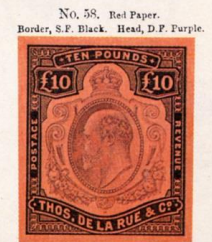
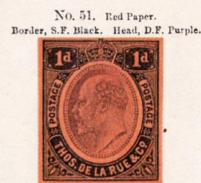
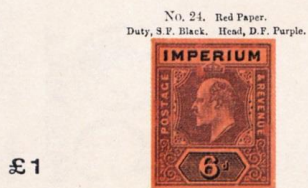
2121



2129

DE LA RUE KEY PLATES ROBSON LOWE 15 NOVEMBER 1979 (SALE No. 1450)





D.F.—Doubly Fugitive.

S.F.—Singly Fugitive.

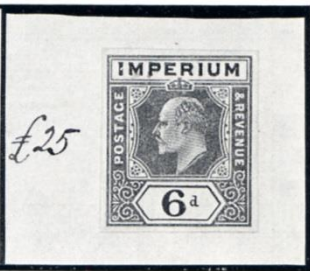
(3)



2178



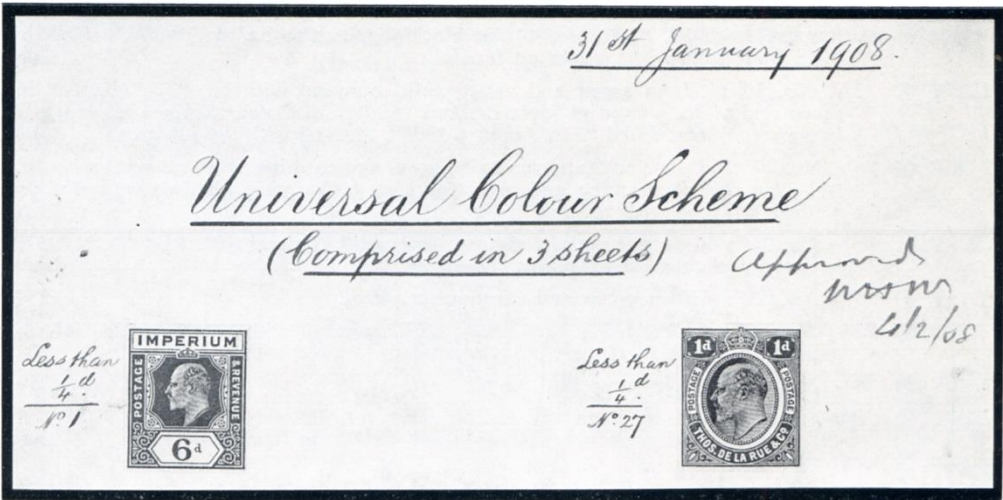
2179



2181



2215



2216



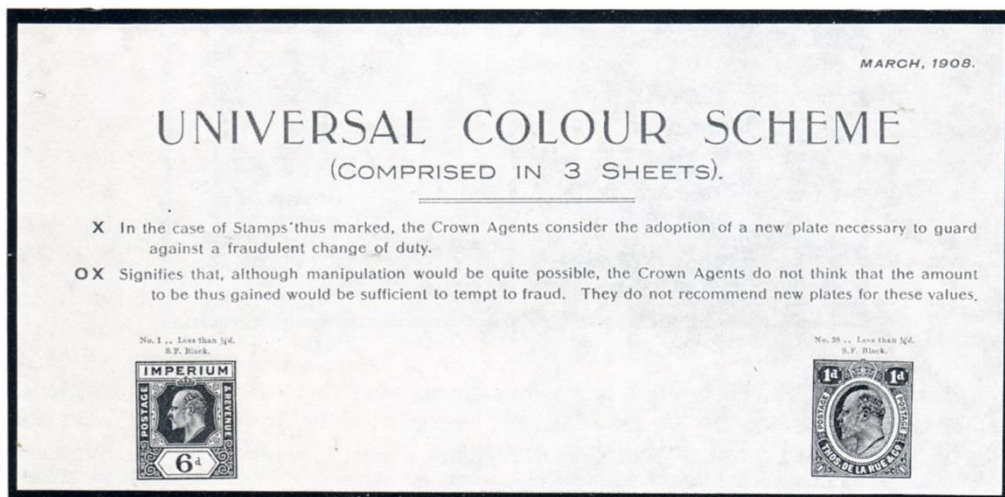


2246

2248



2247



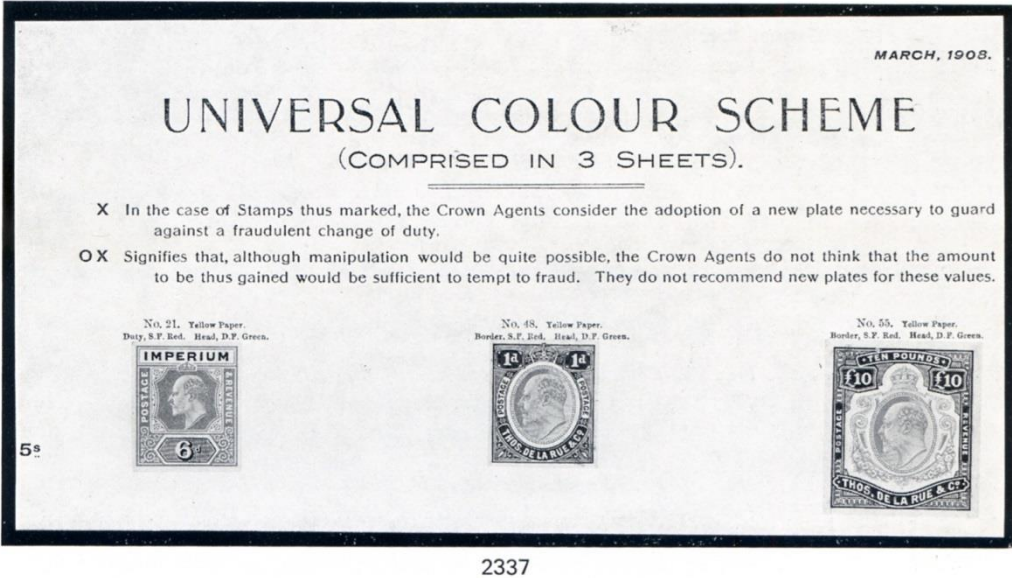
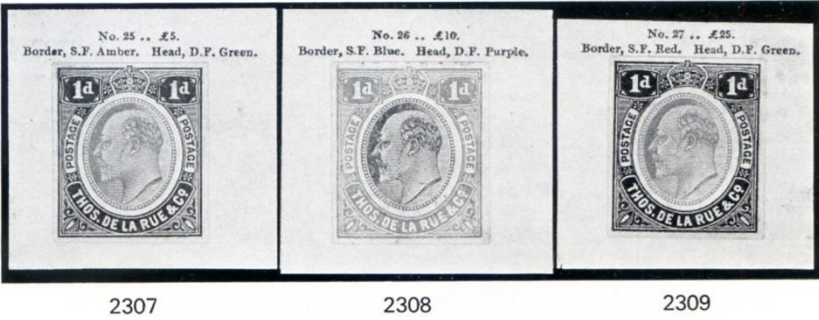
2249



2270

2272

2276







© 1979

Published by ROBSON LOWE LIMITED, 50 PALL MALL, LONDON SW1Y 5JZ  
Printed by WOODS OF PERTH (Printers) LTD., 3-5 MILL STREET, PERTH, SCOTLAND PH1 5JB



