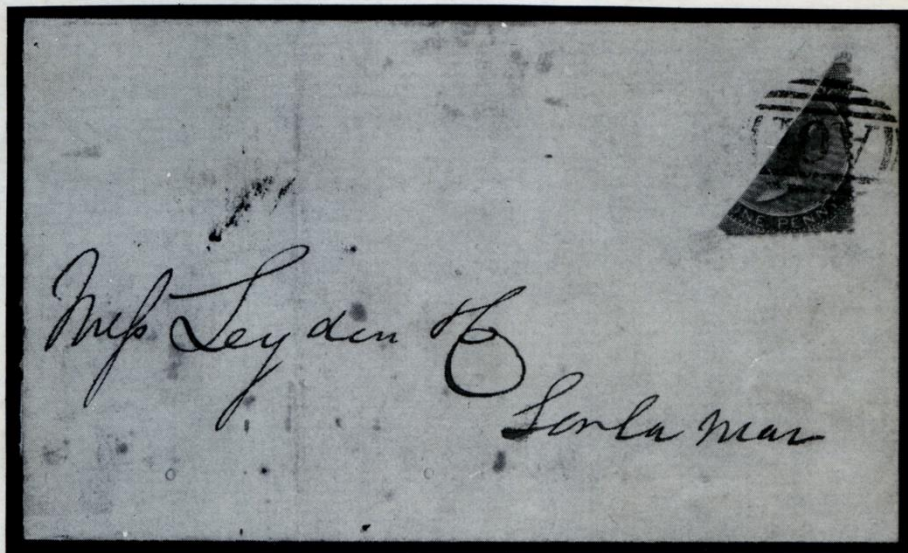




Caribbean Philatelic Auctions

DEALERS IN FINE STAMPS, COVERS & MAPS OF THE CARIBBEAN & B.W.I.



Lot 118

Sale No. 74
of Postal History, Stamps & Early Maps
including the Brian Thompson Collection of

JAMAICA

Closing Date
Wednesday, 12th April, 1989

Caribbean Philatelic Auctions

P.O. Box 91, Harrogate, North Yorkshire,
HG2 0AB, England. Tel: 0423 69020



Catalogue £1





Lot Z5 - 1692 Coronelli



Lot Z7 - 1740 Moll





116



213



222

223



23/11/37 A 464

847A



220



611





478



328



328



472



476



471



323



322



328



473

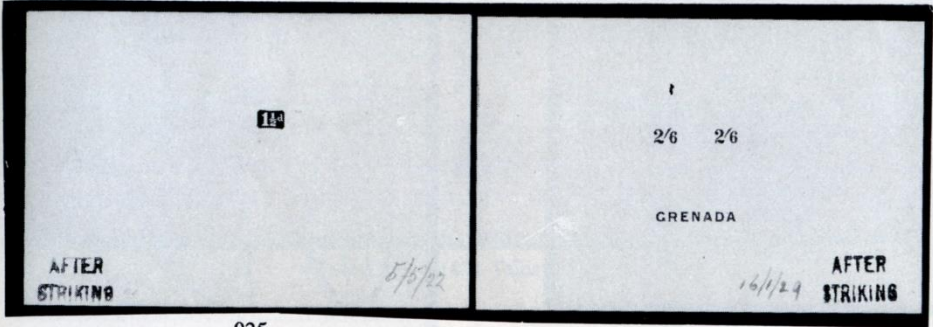


1024



121

924



925

957A

Z11 - 1780 Bonne

Z9 - 1764 Bellin

Z532 - 1758 Bellin

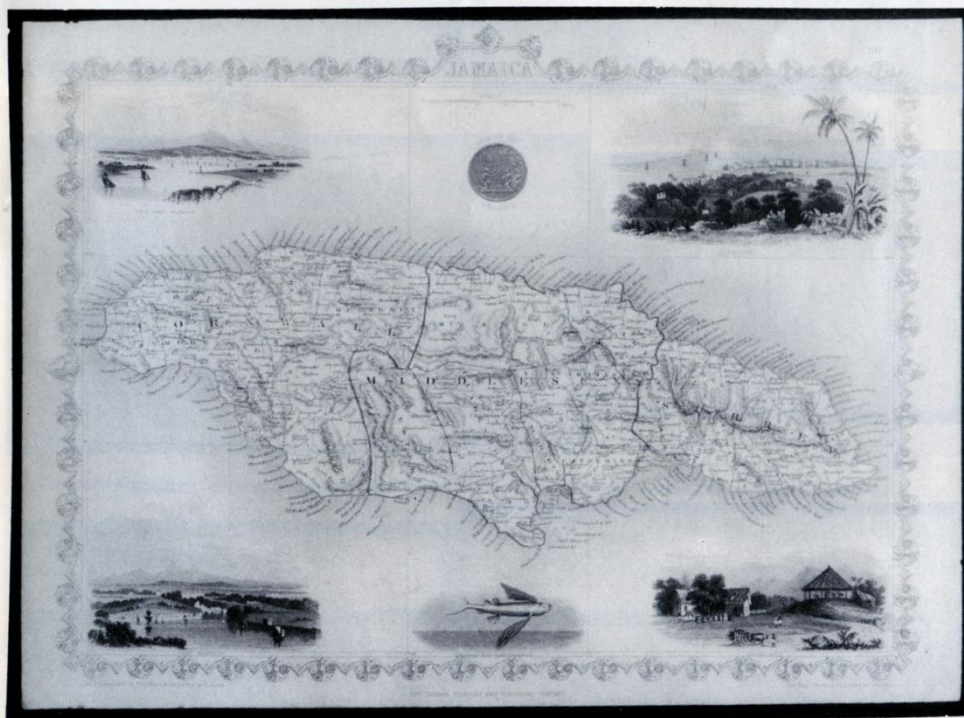
Z9 - 1764 Bellin



Z522 - 1637 Mercator



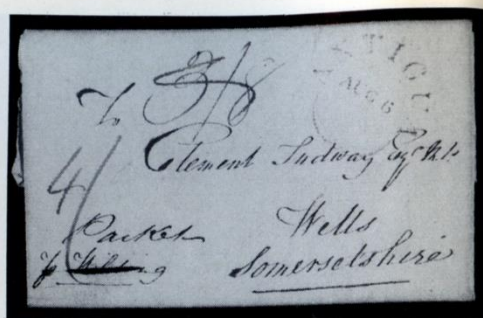
Z532 - 1688 Morden



Z13 - 1851 Tallis



763



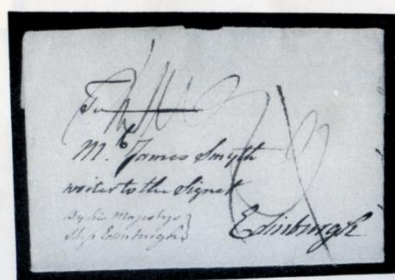
541



18



543



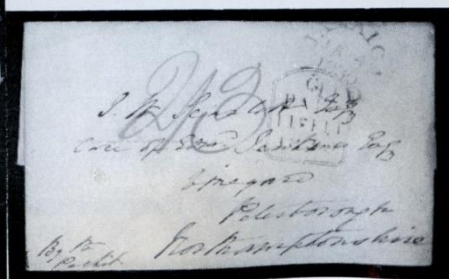
17



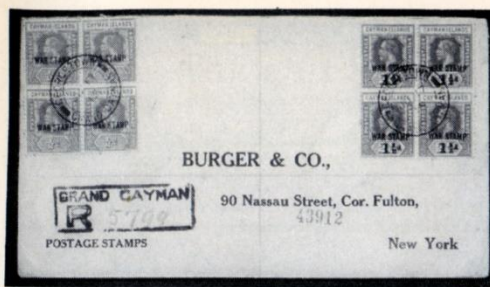
72



19



99



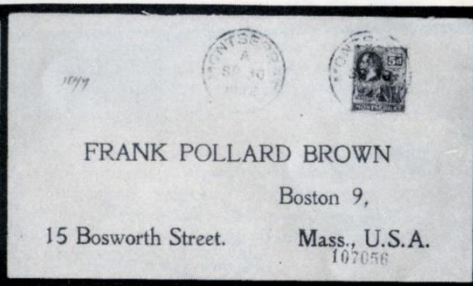
662



290



664



770



289



289



660



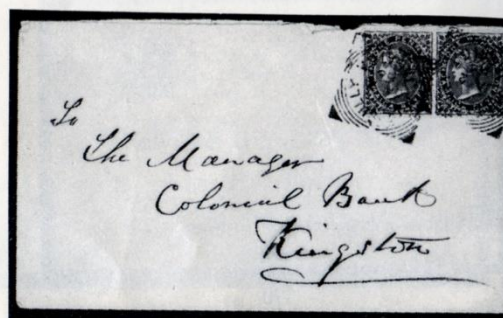
289



409



187



186



410



145



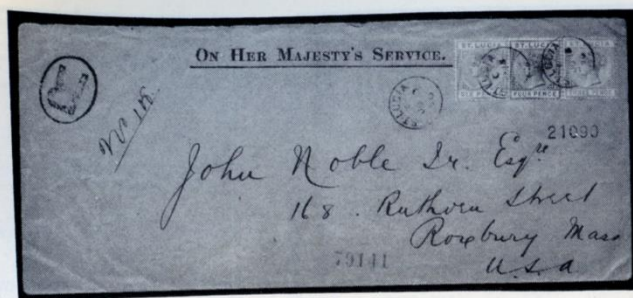
112



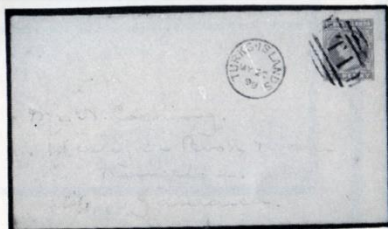
103



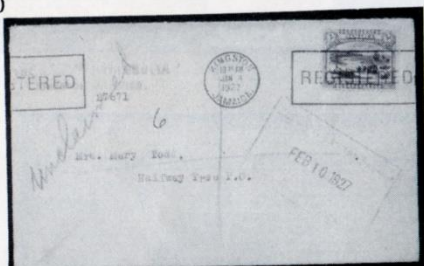
107



800



852



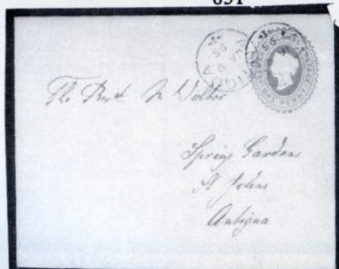
519



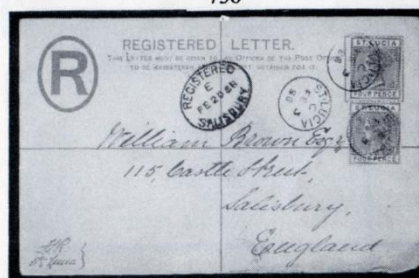
851



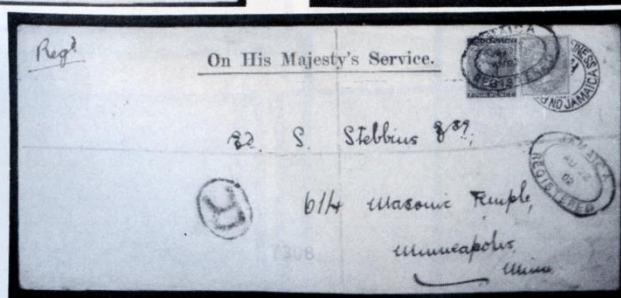
736



734



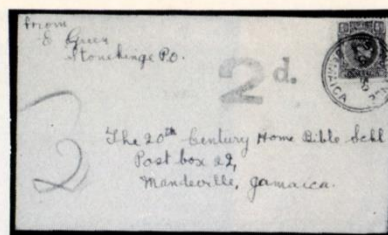
799



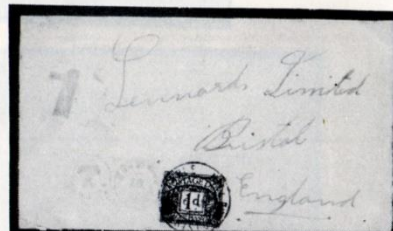
167



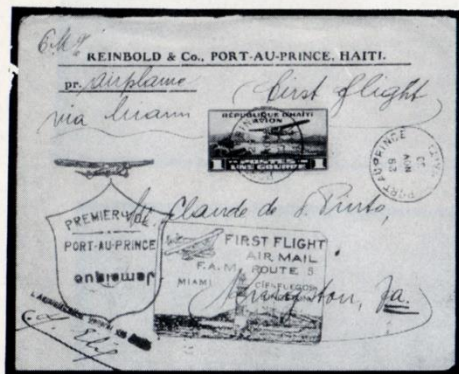
854



381



380



348



382



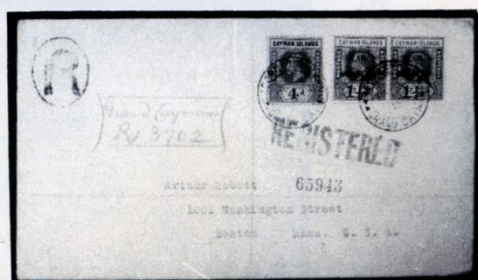
115A



379



855



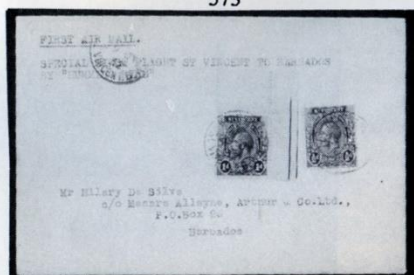
659



573



627



819



666



841



710



839



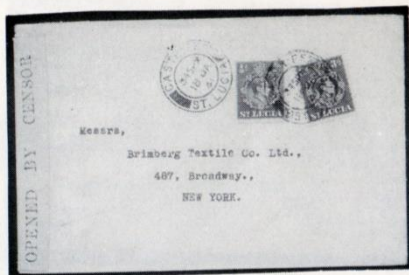
309



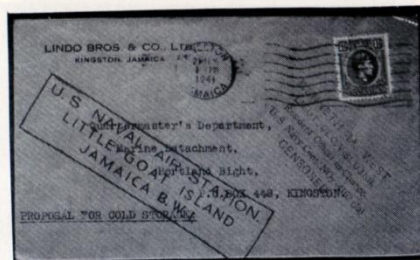
356



355



820



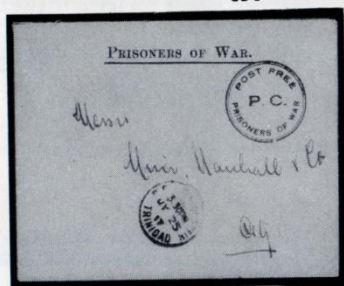
424



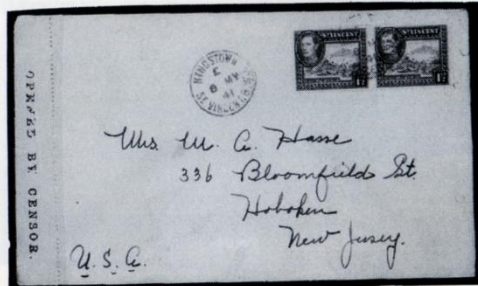
856



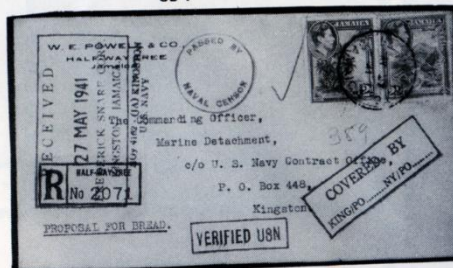
437



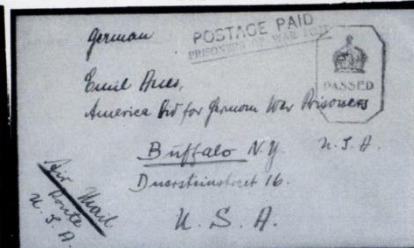
834



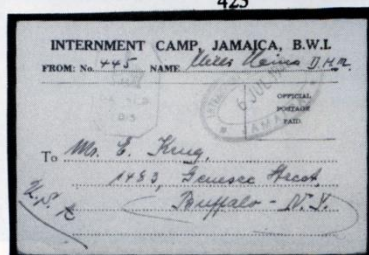
808



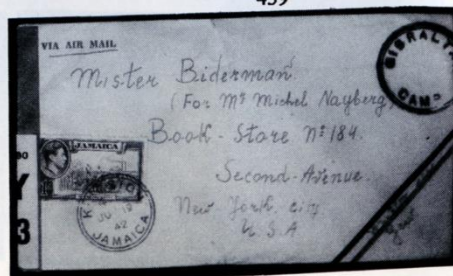
423



439



440



438



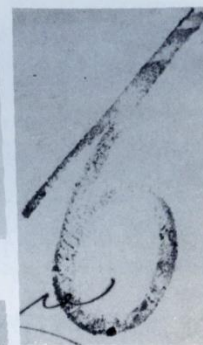
70



101



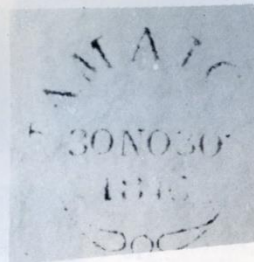
111



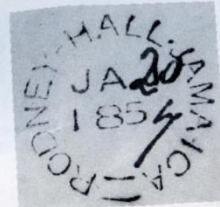
102



74



42



86



68



48



75



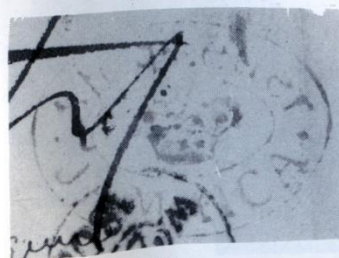
67



81



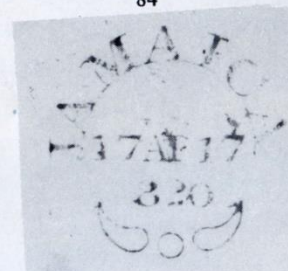
84



92

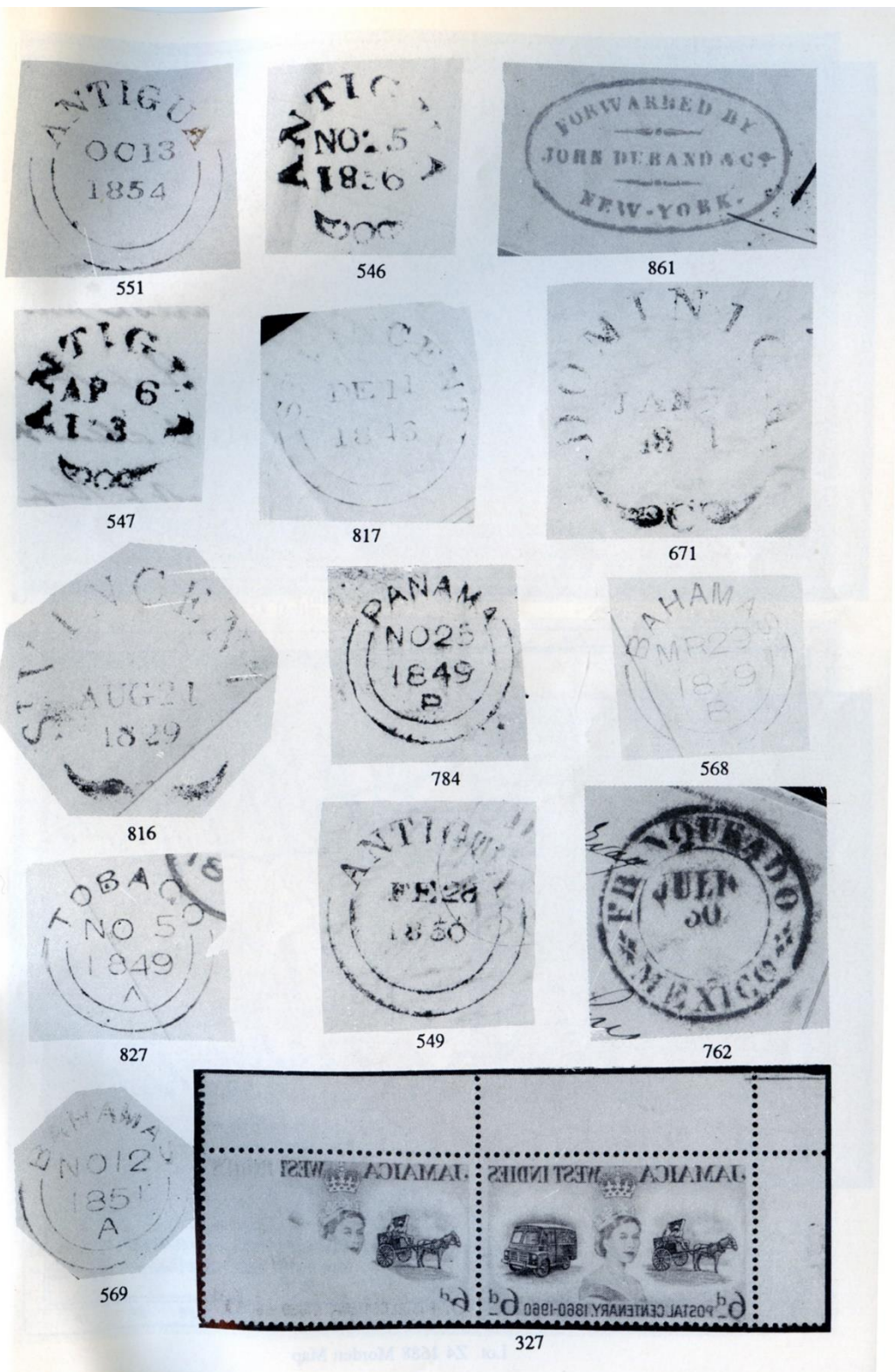


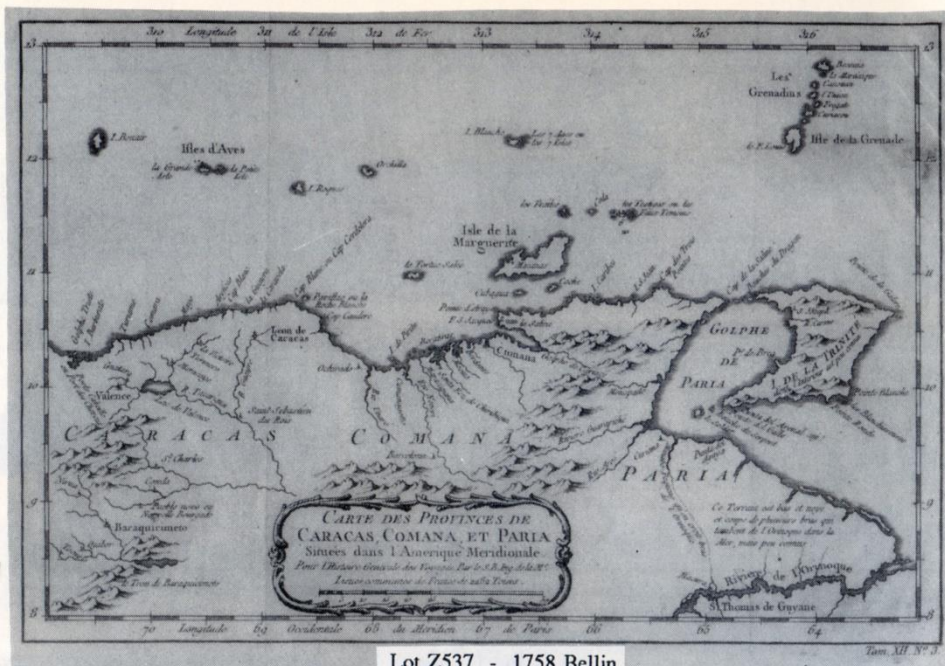
96



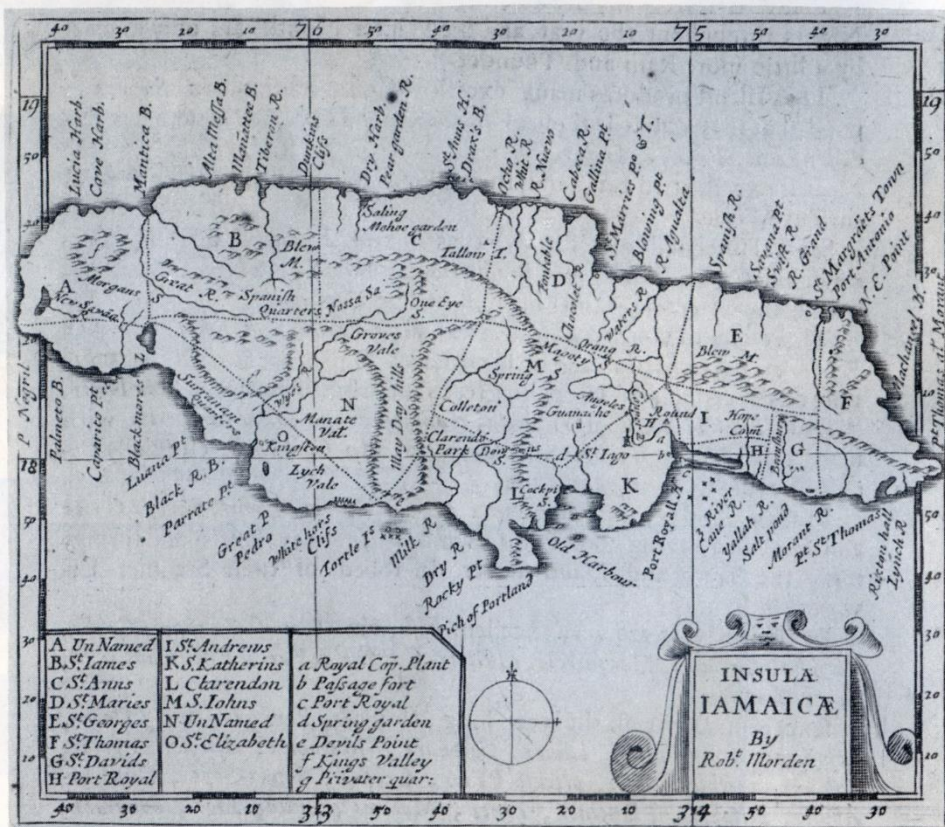
46



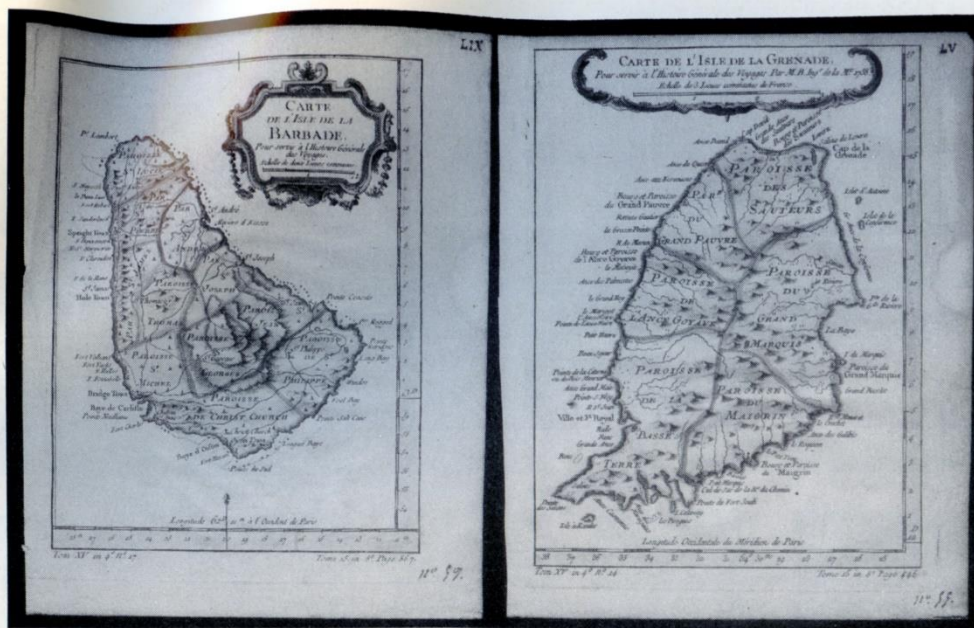




Lot Z537 - 1758 Bellin

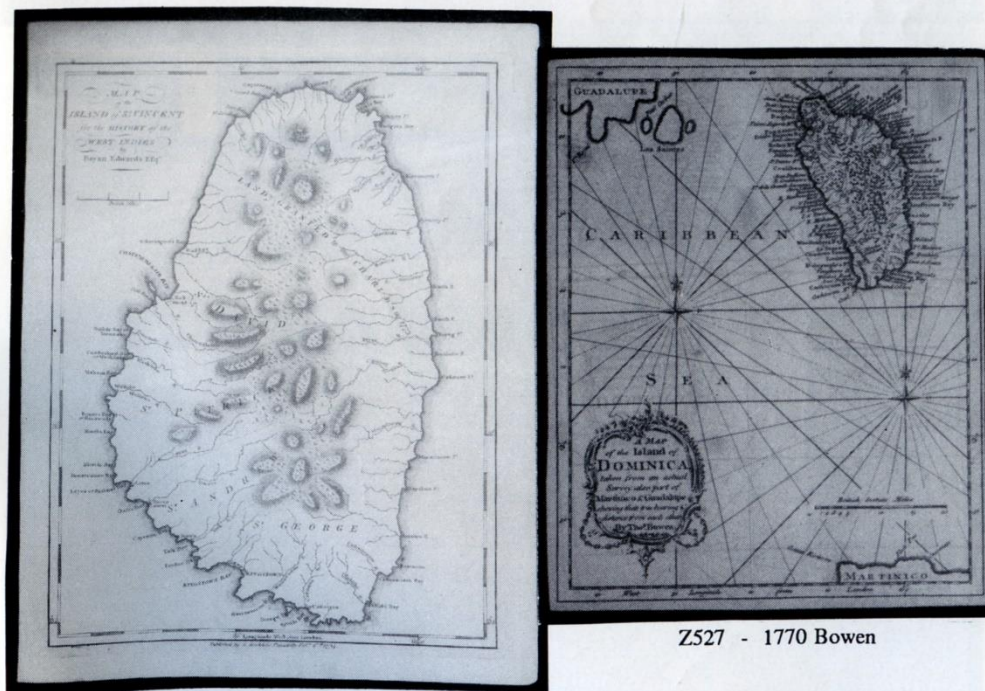


Lot Z4 1688 Morden Map



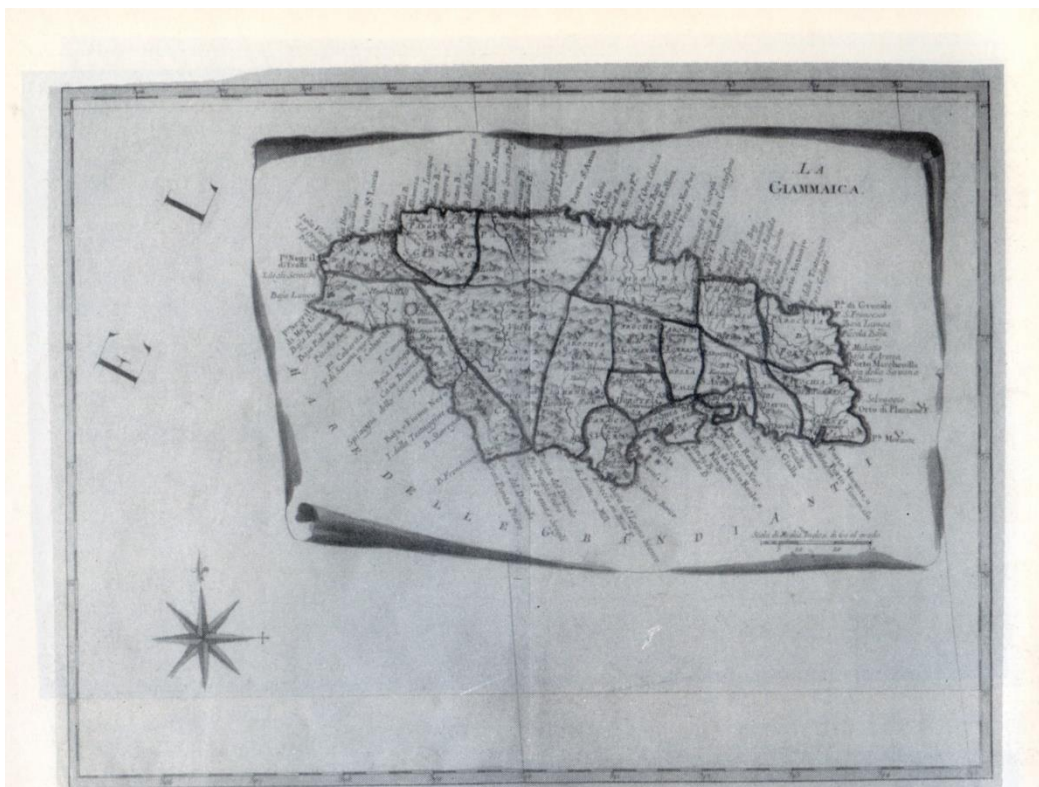
Z524 - 1758 Bellin

Z530 - 1758 Bellin

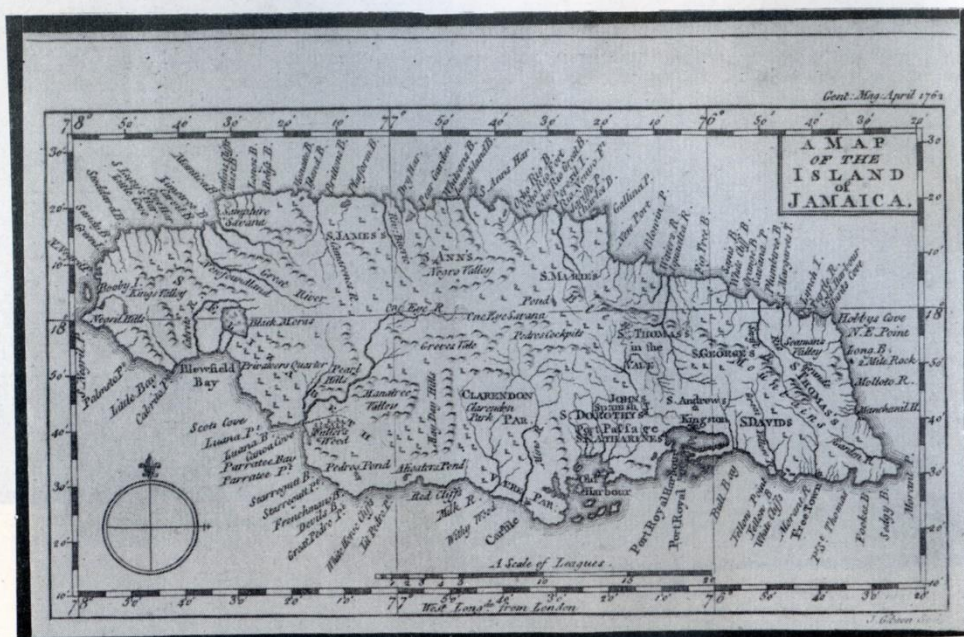


Z536 - 1794 Edwards

Z527 - 1770 Bowen



Z10 - 1778 Zatta Map



Z8 - 1762 Gibson





Caribbean Philatelic Auctions, 12 April 1989: Brian Thompson collection of Jamaica

Lot	Photo	Description	Est
		JAMAICA SECTION	
		EARLY MAPS	
Z1	PHOTO	1534 Bordore Map 'Jamaiqua' as shown on SG411 (16th Century Map Stamp Issue) NOTE:- The 1st MAP OF JAMAICA was by Bordore and issued in 1528. This the 3rd issue of this map and therefore very rare. (The 1528 has fetched as much as £450 at Public Auction) Printed on page with text which is in Spanish. Shows map of Cuba on reverse. Page size 295 x 195 mm. Map size 85 x 145 mm. An extremely Rare & Fine example that would enhance any collection. E	165.00
Z2	PHOTO	1605 Porcacchi Map of (IAMAICA' Superb early map with most attr. title cartouche. Printed on a page of text and map enclosed in border frame 102 x 140 mm. Ideal for a Title Page for the collection. Very rare, most attr. & fine.	110.00
Z3	PHOTO	1676 Speed Map 'JAMAICA' Superb little map with title cartouche. Very good detail, showing Parishes etc. Border frame 85 x 130 mm. Most attr. Ideal for title page for collection. Very Rare & fine.	115.00
Z4	PHOTO	1688 Morden Map. Superb little Map with clear detail and ideal for title page. In border frame 110 x 125 mm with text below. Most attr. Very fine & rare.	120.00
Z5	PHOTO	1692 Coronelli 'Isola De IAMES GIAMIACA' Superb and most beautiful map with sharp detail. Printed on heavy paper. Border frame 330 x 220 mm. Ideal for Study/Stamp Den Wall. Very fine, most attr. & very rare.	135.00
Z6	PHOTO	1714 Nicholas De Fer Map 'L'Isle De La JAMAIQUE' Very fine and sharp detail. Border. Border frame 235 x 345 mm. Ideal for Study/ Stamp Den Wall. Very fine, attr. & rare.	130.00
Z7	PHOTO	1740 Moll Map 'The Island of JAMAICA' divided into its Principal Parishes with Roads etc. Superb Map with excellent detail. Printed on wove paper. Border frame 200 x 275 mm. Very fine, most attr. and scarce.	75.00
Z8		1762 Map by J.Gibson from Gentlemans Magazine 'A Map of the Island of Jamaica' Superb little map with good sharp detail and ideal for mounting on a title page. In border frame 200 x 275 mm. Very fine, most attr. & scarce.	48.00
Z9		1764 Bellin Map 'Carte Des Havres De Kingstoun Et De Porte Royal' (Plan of Kingston & Port Royal) Attr. title cartouche. Contemporary colouring. Very good detail of Port Royal Harbour. Printed on thick cartridge paper. Border frame 195 x 300 mm. Ideal for Study/Stamp Den Wall. Very fine, most attr. & scarce.	65.00
Z10	PHOTO	1778 Map by Zatta 'La Giammaica' with hand colouring. Printed on stout paper. Most attr. Printed in a scroll design. Border frame 320 x 420 mm. Fine detail. Ideal for the Study/Stamp Den Wall. Rare.	115.00
Z11	PHOTO	1780 Bonne Map 'Carte De L'Isle De La JAMAIQUE' Superb Map with sharp detail and printed on heavy paper. Border frame 210 x 318 mm Ideal for Study/Stamp Den Wall. Very fine, most attr. & scarce.	70.00
Z12	PHOTO	1785 Bonne Map 'Kaart Van He Eiland Jamaika' with contemporary colouring. This is the Rare Dutch Edition. A most attr. & superb Map with attr. title cartouche. Border frame measures 208 x 315 mm A delight for the Study/Stamp Den Wall. Printed on heavy paper. Very fine.	95.00
Z13	PHOTO	1851 Tallis Map of 'JAMAICA' Most attr. map with engravings of island scenes in the corners - Port Royal Harbour, Kingston, Port Antonio, Sugar Mill, Seal of Colony & Flying Fish. Much detail. Border frame 225 x 315 mm. Very fine, most attr. & scarce.	57.50
		GENERAL	
14		1907 EARTHQUAKE - 10 Album Leaves each mounted with diff. Real Photographs (7" x 5") of the scenes after this Disaster. A very fine Historic Record.	57.50
15		Large Real PHOTOGRAPHS (large) showing scenes from which Stamps were designed together with stamp. Mounted on leaves. 1919/21 PICTORIALS - 2/- Rodney Memorial Old Kings House S 4d St. James Cathedral at Spanish Town. Also 1938 KGVI 2/- Bamboo Walk. Very fine.	28.00

Caribbean Philatelic Auctions, 12 April 1989: Brian Thompson collection of Jamaica

Lot	Photo	Description	Est
16		Similar lot of Real PHOTOGRAPH Stamp Designs: 1964 1/6d Palisadoes International Airport: 1972 50c Rafting on Rio Grande, \$1 Jamaica House,\$2 Kings House: 1979 7c Dunns River Falls. Also 1969 Christmas 2c,5c & 8c Designs on Colour Cards. Fine lot.	36.00
		EARLY LETTERS WITHOUT HANDSTAMPS	
17		1760 EL from Jamaica to Mr. James Smyth, writer to the Signet, Edinburgh 'By His Majestys/Ship "Edinburgh" Very fine, most attr. & rare.	95.00
18	PHOTO	1762 (20th June) EL from Westmoreland, Jamaica to Mr James Smyth, writer to the Signet,Edinburgh 'by the "Buckie"VCapt.Suttle' Very fine & long letter. Attr. & very scarce.	85.00
19	PHOTO	1765 (8 Aug) EL from Westmoreland.Jamaica to Mr.James Smyth, writer to the Signet,Edinburgh 'by His Majesties Ship/"Centurion" Long letter. Very fine,attr. & very scarce.	95.00
		"NAPOLEONIC" MILITARY MAIL	
20		1797 Document giving a List of Vessels which Sir John Thomas Duckworth lay claim to having captured with details of French, Spanish.Danish & American Vessels plus proceeds etc. Very fine & rare.	95.00
21		1800 (Sept) Account of Schooners captured by HMS Southampton. Fine	19.50
22		1802 Abstract of List of Vessels detained and captured by the Squadron under the Command of John Thomas Duckworth Esq. Rear Admiral of the White Fleet. A fascinating document listing some 27 vessels taken, showing the Nation,place of capture etc. Tear down one fold but a very fine,attr. & rare document.	95.00
23		1802 (15 April) EL 'on Service' to A.M.YATES Esq. Storekeeper, Port Royal from Kingston re. supplies etc. Small tear otherwise fine & scarce.	18.50
24		1802 (9 June) Letter written and signed by Sir John Thomas Duckworth (Rear Admiral) written on Leviathen.at Port Royal to Commodore Derby re. sent sick Marines home etc. Letters signed by Duckworth are rare. Fine.	95.00
25		1803 (21 Dec) Letter from Kingston to Sir John Thomas Duckworth with request by the Agent for Prisoners of War.J.G.Saville that he be allowed to draw £4,000 instead of £2,000 as previously requested. Very fine & most attr. Very scarce.	28.00
		"JAMAICA" STRAIGHT LINE HANDSTAMPS	
26		1779 (15 Nov) EL from Kingston to London. Per 'Thynne Packet' Rated IN. Reverse shows *** S/L 'JAMAICA' Foster type J1 and **** Bishop Mark 11/1A. (Note:- the "Thynne" was the first packet to be "copper bottomed" to increase speed) Fine,attr. & scarce.	67.50
27		1781 (22 Aug) EL from Jamaica to Madeira 'By the "Vigilant" Pacquet' Rated IN. Reverse shows light but *** S/L 'JAMAICA' type J1 partly overstruck by Bishopmark. Very scarce.	65.00
28	PHOTO	1772 (25 Jan) EL from Custom House,Kingston to Madeira 'Per The "Grantham" Pacquet,Capt Jones/Q.D.C.' Rated '4N' with '2N' deleted Reverse shows *** to **** S/L 'IAMAICA' Foster type J2 which opens out nicely for display with front + Bishopmark. Long letter from Madeira Correspondence re. Wine etc. Little torn and fragile but a most attr. fine & very scarce cover.	67.50
29		1788 (10 June) EL from Expedition Point. Jamaica to Norfolk rated 1/- S 1/5d. Reverse shows ** to *** S/L 'IAMAICA' type J2 across join plus *** Bishopmark. Generally fine.	32.00
30	PHOTO	1789 (2 May) from Roselle to Sir Adam Ferguson Bart.M.P. London and rated 3/-. Reverse shows *** to **** S/L 'IAMAICA' Foster type J2 which opens out nicely with front for display. Letter states 'I must dispose of some sugar to pay off the price of the new Negroes upwards of £500' Torn at top but a clean, attr. fine & scarce cover.	50.00
31	PHOTO	1789 (11 July) EL from Roselle to Sir Adam Ferguson type J2 across flap. Little torn but very clean, attr. & fine cover.	40.00
32	PHOTO	1791 (28 May) EL from Roselle to London and forwarded to Maybole, N.B. with *** to **** S/L 'IAMAICA' Foster type J2 on reverse. Interesting letter mentions 'I bought six Spanish Horses for £50' etc. Fine, quite attr. & scarce.	52.50

Caribbean Philatelic Auctions, 12 April 1989: Brian Thompson collection of Jamaica

Lot	Photo	Description	Est
33	PHOTO	1776 (16 Feb) EL from Kingston to Madeira rated 'IN' with ** to *** 'JAMAICA' Foster type J3 (with narrow "M" & "A's") which opens out with front for display. Small tear at top otherwise fine & attr. Type J3 is difficult to find. Scarce.	57.50
34	PHOTO	1788 EL from Jamaica to H.W.Windham Esq.M.P. London rated 1/- with *** S/L 'JAMAICA' Foster type J2 on reverse plus red wax seal and Bishopmark. Fine, attr. & scarce.	52.50
35	PHOTO	1799 Entire from Kingston to George Leckie, London per 'H.M.Cutter "Cygnets" and rated 5/-. Reverse shows *** but overwritten 2 line 'JAMAICA/19 MAY 99' type J4 which opens out with front. (This type was only in use for about 6 months and is very scarce) Seal cut away and cover is soiled with heavy filing crease but very scarce.	57.50
36		1800 (24 Feb) EL from Kingston to George Leckie, London 'P.Packet "Earl Leicester" and rated 3/4d. Reverse shows light but ** 2 line 'JAMAICA/23 MAR 1800' type J3 (This date nearly 6 months earlier than the EKD recorded by Foster) (Note:- Foster only records mail carried by 'Earl of Leicester' in 1805) Fine, attr. & very scarce.	48.00
37		1801 (27 Oct) EL from Roselle, Jamaica to Edinburgh per 'Pacquet' 3/8d deleted and 4/4d rate added. Reverse shows very light but ** 'JAMAICA/1 NOVEMBER 1801' Foster type J5 which is partly overstruck by receiving d.s. Letter contains reference to 'H.M.S.Amphion' Generally fine & attr.	35.00
38	PHOTO	1804 (12 April) EL from St.Marys to London rated 1/10d with *** 2 line 'JAMAICA/15 APRIL 1804' Foster type J5 which opens out nicely with front for display. Fine, attr. & very scarce in this condition.	75.00
		"JAMAICA " FLEURON HANDSTAMPS	
39		1806(9 Feb) from Kingston to Capt Sorrell R.N. London rated 2/-. Reverse shows feint 'JAMAICA' fleuron type FI. Fine.	13.50
40		1807(21 Nov) EL from Kingston to London 'Pr. Packet' with on reverse very light but ** large 'JAMAICA' fleuron type FI. Tear has been re-inforced by seal etc. but generally fine & scarce.	24.00
41		1808 (9 Nov) EL from Jamaica to Wood Hall .Dumfries 'Pr.Packet' and rated 4/6d with large 'JAMAICA' fleuron type FI on reverse across flap which is fair but clear.	15.00
42	PHOTO	1816 (20 Nov) EL from Haughton, St.Elizabeths,Jamaica to London 'By Packet' and rated 2/2d with in m/s 'Indd.Pd.7^d' & 'Single Post Paid to Kingston' Reverse shows *** 'JAMAICA' fleuron type F4 which opens out with front for display. Has tear at top and little soiled but otherwise fine & scarce.	40.00
43		1817 EL from Kingston to Falmouth per 'Post' rated 1/3d. Reverse shows *** 'JAMAICA' fleuron type F4 with clear date which is across join. Part of flap torn away otherwise fine.	28.00
44		1819 (15 Jan) EL from St.Mary's to Mrs.Dickson,London 'Pr.Packet' and rated 2/2d. Letter is duplicate of original sent per "Blucher" Packet. Reverse shows *** 'JAMAICA' fleuron type F4 with clear date which is partly over stamped by receiving d.s. Fine 8 attr.	32.00
45		1819 (16 Jan) EL from Kingston to Roselle,Ayr,N.B. 'Pr.Packet' Rated 2/6d. Reverse shows ** to *** 'JAMAICA' fleuron type F4 which opens out with front for display. Letter tells of death of James Hunter Wood and asks the amount to pay off mortgage on the Estate. Fine 8 attr.	30.00
46	PHOTO	1820 (15 April) EL from St.Marys,Jamaica to Rozelle.near Ayr,N.B. Per "FOX" Rated 5/- with *** 'GLASGOW' and Scottish boxed 'i' on p , front and *** to **** 'JAMAICA' fleuron type Fa on reverse which opens out nicely with front for display. A most attr. very fine cover and scarce with this quality strike.	75.00
47		1821 (6th Jan) EL from Jamaica to Edinburgh 'Pr.Pkt' Rated 4/10d. Reverse shows ** to *** 'JAMAICA' fleuron type F5a with clear date which crosses flap. Fine.	30.00
48		1822 (9 June) EL from Kingston to London 'Pr.Packet' and rated 4/4d. Reverse shows ** 'JAMAICA' fleuron type F5a on reverse across flap. Little soiled.	16.50

Caribbean Philatelic Auctions, 12 April 1989: Brian Thompson collection of Jamaica

Lot	Photo	Description	Est
49		1823 (21 Dec) EL from Kingston to Greenock per 'Packet' rated 2/6d with ** 'Add j' on front and ** part strike of 'JAMAICA' fleuron type F4a with clear date plus receiving d.s. Little soiled, otherwise fine.	16.50
		"POST TOWN" STRAIGHT LINE HANDSTAMPS	
50	PHOTO	1778 (25 Feb) EL from Spanish Town to Madeira rated 'IN' with on reverse *** 2 line 'SPANISH/TOWN' Foster type Ia which is partly overstruck by Bishopmark. Also light but *** 'JAMAICA' type J1 h.s. Both open out with front for display. A very clean, most attr. fine & rare cover.	125.00
51	PHOTO	1785 (3 Oct) EL from Sav La Mar to Edinburgh 'Pr. "Grantham" Packet' with 'Pd. Lord. Post 1/3d' in m/s etc. Reverse shows ** strike of the Rare S/L 'SAV LA MAR' h.s. type T2 which opens out with front, plus Bishopmark and *** 'JAMAICA' type J2 across flap. A most attr. clean, fine & rare cover.	150.00
52	PHOTO	1800 (8 Dec) EL from Dundee, Trelawney, Jamaica to Edinburgh 'Per. Packet' and rated 2/2d 8 shows 'Paid 2/6d'. Reverse shows *** S/L 'FALMOUTH' Foster type T2 which opens out with front for display. Also faint 'JAMAICA/15 DEC 1800' type J5. Fine, attr. 8 scarce.	67.50
53		1802 (16 Nov) EL from Dundee, Trelawney to Edinburgh 'Pr. Packet' with 'Paid 2/6d', 6/6d 8 5/6d rates. Letter deleted. Reverse shows light but ** to *** 'FALMOUTH/JA' Foster type T3 and ** 2 line 'JAMAICA/16 NOV 1802' type J7. Both open out with front for display Usual filing crease but a very fine, attr. 8 scarce cover.	48.00
54	PHOTO	1805 (9 April) EL from Dundee, Trelawney to William Robertson, Edinburgh 'Pr. Packet' with various rates. Reverse shows *** to **** 2 line 'FALMOUTH/JA' Foster type T3 which partly overstruck by receiving d.s. and opens out nicely with front. Also faint large fleuron. Letter mentions French Fleet in the vicinity which has already destroyed all shipping in Dominica, St. Kitts Nevis & Montserrat. Some age staining but a very fine, quite attr. 8 scarce cover.	67.50
55	PHOTO	1811 (21 May) EL from Clarendon to Hawick, Roxboroughshire, Scotland rated 2/3d with *** 'SPANISH-TOWN/JA' h.s. Foster type T3a on reverse across flap. Mentions inheriting property in Jamaica. slight soiling but very fine, quite attr. 8 scarce.	67.50
56		1819 (15 Apr) EL from Lucky Valley, Clarendon to London and rated 2/2d 'Per Packet "Lady Louisa" with 'SPANISH TOWN/JA' S/L type T3. Light but ** strike on reverse across join. Generally fine.	52.50
57	PHOTO	1821 Entire with Slave details to Kelso, North Britain 'Pr. "Chichester"/Packet' rated 2/5d. Reverse shows ** 'ANNOTT0-BAY/JA' type T3 across join plus 'JAMICA' fleuron. Little torn and seal removed but clean and quite attr. Scarce.	52.50
58		1834 (14 Oct) EL from Jamaica to London. Rated 6/6d with ** framed 'PACKET LETTER' on front and overinked ** to *** S/L 'FALMOUTH' type T4a on reverse across flap plus 'KINGSTON' cds. Type K4. Rather soiled on reverse but otherwise fine.	32.00
59	PHOTO	1837 (30 Oct) EL from Blackheath, Westmoreland to Edinburgh per 'Packet' with scarce 'I.P. Paid 1/3d' in m/s deleted plus 2/3d rate. *** boxed green Falmouth '5' on front and with *** S/L 'SAVANNA LA MAR' h.s. Foster type T4b in black which opens out with front for display. Fine arrival cds alongside. Seal removed but a very fine, attr. 8 very scarce cover. (Ex Spence)	95.00
		EARLY DATESTAMPS OF "KINGSTON"	
60		1827 (10 June) EL to Ayr. N.B. rated 4/6d with * to ** 'KINGSTON' cds type K2a with clear date which opens out with front. Fine.	12.50
61		1835 (21 Feb) EL from Clarendon to London 'Pr. Packet' rated 2/2d with light but fair 'KINGSTON' cds. Foster type K4 on front which opens out with front and is clearly dated.. Fine 8 attr.	16.50
62		1835 Entire to Revd. John Beecham, Wesleyan Mission House, London 'Pr. Packet' and rated 2/2d single. Reverse shows light but ** clear dated 'KINGSTON' cds type K4 which opens out with front. Very fine 8 attr.	16.50
63		1842 (18 April) EL to London B/S *** to **** but oily 'KINGSTON' cds type K6a which opens out with front. Fine.	17.50

Caribbean Philatelic Auctions, 12 April 1989: Brian Thompson collection of Jamaica

Lot	Photo	Description	Est
64		1844 Entire from Kingston to Wesleyan Mission House, London. Rated 1/- . Reverse shows *** 'KINGSTON/JAMAICA' cds type K6 which is just overstruck by receiving cds and opens out nicely with front for display. Very fine 8 attr.	18.50
65		1840/45 EL 8 Entire to Manchester or London. Reverse shows *** 'KINGSTON' type K6 or 6a (2). Fine 8 clean.	28.00
66		1825/53 5 EL's to London, Lancs or Scotland with fair KINGSTON cds types K2,2a,5,6a 8 8. Generally clean 8 fine lot.	44.00
		CIRCULAR "POST TOWN" HANDSTAMPS	
67	PHOTO	1836 (15 Jan) EL from Ramble Pen to Stirling, N.B. 'Per Packet' Rated 2/6d with feint boxed Scottish '1/2' on front. Reverse shows light but ** dated 'SPANISH TOWN' in 2 circles. Foster type PI. (Very early date of use) Opens out with front for display. Cover very soiled but otherwise fine & scarce.	48.00
68	PHOTO	1836 (9May) Entire from Spanish Town to Hatton Garden, London. Rated 2/2d with light but ** to *** 'SPANISH TOWN' in 2 circles. Foster type PI with clear date which opens out with front for display. Fine, attr. 8 very scarce.	52.50
69	PHOTO	1840 (30 March) Entire from Spanish Town to Edinburgh rated 1/-with **** 'SPANISH TOWN/JAMAICA' cds in Blue. Foster type P2a. (6 months earlier than recorded by Foster) Opens out with front for display. Very fine, attr. 8 rare.	85.00
70	PHOTO	1840 (6 Aug) EL from Duncans to Scotland. Rated 1/- . Reverse shows *** 'DUNCANS' cds in red. Foster type P2a across join plus *** boxed 'FALKIRK' arrival d.s. Very early date. Addressees name crossed out but a fine 8 rare cover.	48.00
71		1841 (3 Aug) EL from Morant Bay to Falmouth. Rated 8d (local inland rate) Reverse shows *** but overinked 'MORANT BAY' cds type P2a which opens out with front for display. Letter written by a man on his death bed and finished by his wife. Very clean 8 fine.	32.00
72	PHOTO	1841 (13 Jan) EL from Success Estate, St. James to Messrs. Adam Cliff and Son. Liverpool 'Per Packet' with 'Paid 8d' deleted and 2/- rate substituted. Front shows *** 'LITTLE RIVER/JAMAICA' type P2b with '1' in year over stamped 'O', date thus reading 1840. Also *** 'Missent/To/London' Letter includes details of crops etc. A very fine, attr. and unusual cover.	115.00
73		1842 (10 May) EL from Maroon Town to Capt. J.A. Robertson, Boyle, Ireland with 'g.p. Paid 8d' in ra/s. Front shows **** 'BOYLE' cds of receipt. Reverse shows part 'FALMOUTH' type P2a. Very fine.	14.50
74	PHOTO	1842 (18 May) EL from Old Harbour to Clayton & Cookson, London 'Pr. Packet'. Rated 2/- with 'Paid 4d' deleted. Reverse shows *** to **** 'OLD-HARBOUR' cds Foster type P2b (Very early date and very scarce) Opens out with front for display. Fine.	52.50
75	PHOTO	1842 (25 Oct) Part Entire (Front complete) to Liverpool Per 'Pkt' with Paid 6d deleted and 1/- inserted. Shows *** 'PORT-ANTONIO' cds type P2b in blue (5 months later than Foster) Very rare only 2 recorded. Superb & most attr.	85.00
76		1843 (June) EL to Rev.J.Angus London Pr.'Packet' with Paid 8d deleted and 1/- rate inserted. Front shows poor 'MONTEGO BAY' cds type P2b. B/S. Long letter containing protest by Members of Baptist Church at Salters Hill against the Remonstrance of the Presbytery of Jamaica. Fine.	11.00
77		1844 Entire to London 'Per.Packet' and rated 1/2d with *** 'MANDEVILLE/JAMAICA' cds type P2a on reverse which opens out with front for display. Generally fine.	18.50
78		1844 (7 Nov) EL from Spanish Town to Greenwich Hospital. England 'Pr.Packet' Paid 1/2. Front shows *** 'PAID' h.s. in red. Reverse shows *** 'SPANISH-TOWN' cds type P2b which opens out with front for display. Very fine & attr.	18.50
79	PHOTO	1845 (20 Feb) Entire from Jamaica to Wesleyan Missionary Society, London rated 2/4d with *** 'MONEAGUE' cds type P3 on reverse. Very fine, attr. & very scarce.	48.00
80	PHOTO	1846 EL from Vere (12 miles South of Clarendon) to Dr. Wm. Henderson, Friendship Estate, Bath rated 8d. Reverse shows *** to **** but overinked 'VERE' cds. Foster type P2a in Black which opens out with front for display. Very fine, attr. & scarce.	48.00

Caribbean Philatelic Auctions, 12 April 1989: Brian Thompson collection of Jamaica

Lot	Photo	Description	Est
81	PHOTO	1846 (7 March) EL from Port Maria, St.Mary, Jamaica to London 'Pr. Packet' Front shows *** 'Thormorton St./1D.PAID' h.s. plus ***'PD' h.s. Reverse shows **** 'PORT-MARIA' cds Foster type P3 which opens out with front for display. Cover little fragile but fine & attr. Very scarce.	65.00
82	PHOTO	1846 (7 May) Entire from Jamaica to Greenock,N.B. Per 'Packet'. Rated 2/4d. Reverse shows **** 'OCH0-RI0S' cds. Foster type P3 which opens out with front for display. Heavy filing crease & little soiled. Otherwise fine & scarce.	45.00
83	PHOTO	1847 (29 May) EL from Conteur House, Jamaica to Baptist Mission House,London. Rated 1/2d with *** 'FALMOUTH-JAMAICA' cds on front. Type P4. Fine,attr. & scarce.	48.00
84	PHOTO	1852 (22 June) EL from Pear Tree Grove to May Hill P.O. Manchester with 'Prepaid' & 'Paid 6d' in m/s. Reverse shows ** to *** 'PEAR-TREE-GROVE' cds Foster type P3 plus 'MAY HILL' & 'KINGSTON' cds which open out with front. This P3 very rare and Foster records only 6 known. Rather discoloured and soiled.	55.00
85		1852 (9 Sept) EL from Colonial Bank,Kingston to A.C.Logan,May Hill P.O. Charged 6d. Reverse shows *** 'MAY HILL' cds type P2a and*** 'KINGSTON' cds. Fine.	16.50
86	PHOTO	1857 (19 Jan) EL from Mount Hermon to Revd.John Clarke Savanna-La-Mar. Rated 8d. Reverse shows **** 'RODNEY-HALL-JAMAICA' cds type P6 which opens out nicely with front for display.Cover creased but otherwise fine. Scarce.	32.00
87		1860 (23 Oct) small cover to Ayr(Scotland with 'Pd.6d' in red with ** to *** 'JAMAICA/PAID' type PD5 in red plus slightly doubled but *** strike of 'CLARENDON' Foster type P8. B/S. Fine,attr. scarce.	30.00
88		1865 (7 Feb) Stampless EL from Green Island to Liverpool 'Pr. Packet' with 'Paid 1/-' in m/s. Shows ** to *** 'JAMAICA/PAID' in red type PD4 and reverse fair 'GREEN ISLAND' cds type P11a. (Note:- Letter sent stampless 4 years after issue of Jamaican Stamps but authorised by Jamaica P.O. as shown with PAID h.s.GLen. fine.	25.00
89		1868 (24 May) small envelope to Alderney.Channel Islands with ** to*** 'GORDON TOWN' type P11 on reverse plus 'KINGSTON' cds. Flap torn. Soiled.	7.00
		SHIP LETTERS & HANDSTAMPS	
90	PHOTO	1776 EL from Jamaica to London with *** 2 line 'DOVER/SHIP LRE' in Black. Very fine,attr. & scarce.	67.50
91		1/98 (20 May) EL from Kingston to London (Ex Madeira Correspondence) Per Thais/Man of War' rated 1/5d with ** to *** 2 line 'LIVERPOOL/ SHIP' on front. Interesting contents re. wine shipments. Very fine.	57.50
92	PHOTO	1808 (24 Jan) EL from William Forbes, Jamaica to his Uncle in Falkirk with light but **** Crown type 'Ship Letter/JAMAICA' Foster type SL1. 2/4d rate deleted and 2/5d substituted. (Writer states he intends a prize privateer to proceed to Georgia) Fine, attr. & scarce.	110.00
93		1S11 (30 January) Ship Letter from Falmouth, Jamaica to New York City via Philadelphia 'Per Eunice/Capt Dryburg' Shows light but *** curved S/L 'SHIP' & *** Philadelphia h.s. on front. Rated 14½. (12½C + 2c Capt's gratuity) Very interesting letter. Very fine, most attr. and scarce.	67.50
94	PHOTO	1818 EL from Kingston to London 'Bv H.M. Brig. "Pelican" and rated 1/4d. Front shows *** step type 'PORTSMOUTH/SHIP LETTER' Fine & scarce.	65.00
95	PHOTO	1320 (15 Oct) EL from Kingston to Edinburgh with 'Paid 1N2' in m/s and *** step type 'DEAL SHIPLETTER' on front and very fine black wax seal with head on reverse. Little soiled and creased down centre but otherwise fine.	40.00
96	PHOTO	1339 EL from Ayr, Scotland to Alex C, Logan Esq. Great Valley, Manchester, Jamaica 'Pr. the "Fanny" Captn. Campbell' and rated 2/6d. Front shows circular unframed 'KINGSTON/SHIP LETTER' Foster type SL3 (dated 7th Feb) the EKD for this h.s. Fine, attr. & very scarce.	285.00
97		1841 (1st Nov) EL written on Bague Madelaine at Port Royal to Mr. William Holland, Senr. Salem, N.Car. 'Per Brig "Betsy & James" of Philad' and rated 2/- with *** small 'SHIP' h.s. and 'PHILADELPHIA' cds. Very fine long letter. Attr & scarce.	48.00

Caribbean Philatelic Auctions, 12 April 1989: Brian Thompson collection of Jamaica

Lot	Photo	Description	Est
98	PHOTO	1856 Foolscap Stampless cover from Kingston to Barbados with ***2 line 'JAMAICA/SHIP LETTER' on front. Foster type SL5. 1/4d rate deleted & 1/8d substituted. B/S 'ST THOMAS, VIRGIN IS' 1966 BPA Certificate. Some minor peripheral faults but otherwise very fine, attr. & very rare.	230.00
		"PAID" & "TO PAY" HANDSTAMPS	
99	PHOTO	1330 (4 Jan) EL from Jamaica to Peterborough, Northamptonshire 'By the Packet' with*** to **** 'JAMAICA/PAID' d.s. type PD3 on front which just touches over edge of cover and is partially overstruck by tombstone 'PAID' h.s. Very fine. Remarkably clean, most attr. & very scarce.	95.00
100		1843 (18Nov) EL from Kingston to Lyon,France clearly showing the Rate to U.K. 1/8d and double French rate of 5d,totalling 2/6d. Front shows ** 'JAMAICA/PAID' type PD5 in red plus oval 'PD' etc. B/S. Letter to France are scarce. Interesting letter. Copy typed. Fine & attr.	36.00
101	PHOTO	1847 (6 Feb) EL from Kingston to Aberdeen Per 'Packet' and rated 1/-. Front shows *** 'JAMAICA/PAID' cds type PD5 in red plus G.B. cds etc. Fine,attr. & scarce.	38.00
102	PHOTO	1848 (24 Aug) EL from Kingston to May Hill P.O. Manchester per 'Post' with *** '6' Foster type TP1 on front. B/S 'MAY HILL' cds. Very fine, attr. & very scarce.	95.00
103		1848 (30 Oct) EL from Montego Bay to Spanish Town with 'Post Paid in m/s. Front shows *** strike in red of the very Rare 'PAID/8D.' Foster type PD14 (Note:- This is EK Date for this type and one of only 8 known examples) See Fosters Book Page 109. Reverse shows ** 'SPANISH TOWN' cds type P2b plus MONTEGO BAY cds. Very fine,attr. & very rare, Exhibition item	430.00
104	PHOTO	1849 small envelope to London with *** to **** 'S/1/-' h.s. type TP2 on front. B/S *** 'KINGSTON-JAMAICA' cds plus Black Seal. Fine.attr. & very scarce.	87.50
105		1860 (24 June) small cover addressed to Ayr,Scotland with 'Paid 6d' in m/s. Front shows *** but inverted strike of 'JAMAICA/PAID' type PD5 in red with clear date which is partly overstruck by *** 'LONDON/PAID' cds. B/S. Couple worm holes but fine. attr. & scarce.	28.00
106		1864 (22 Oct) EL from Green Island to Liverpool 'Pr. Packet' with 'Pd.1/—' in m/s. Front shows *** 'JAMAICA/PAID' type PD5 in red. Various B/S. Cover is discoloured but otherwise fine & scarce.	25.00
107	PHOTO	1899 cover from Albany (St.Mary) to Claremont P.O, with *** to **** Double Ring 'PAID/JAMAICA' (dated 2nd Oct. 6 months earlier than EKD recorded Al Johnson) Further strike alongside. 1d Pd in crayon on front and *** 'CLAREMONT' double ring d.s. on reverse plus 'ALBANY' cds. Superb & most attr. & rare cover of Exhibition Quality.	87.50
		EARLY MISCELLANEOUS HANDSTAMPS	
108		1809 (16 April) EL from William Forbes, Jamaica to his Uncle of Falkirk with 2/3d rate deleted and 2/4d substituted. Front shows light but ** to *** 2 line 'FALMOUTH/PACKET LETTER' Letter decies the habit of training armies of slave negroes in the art of war etc. Very clear, most attr. & fine.	48.00
109		1826 (20 Feb) EL from Kingston to Edinburgh rated 2/3d with **** boxed Falmouth '½' in green on front. 'KINGSTON' cds on reverse. K2. Fine & quite attr.	32.00
110	PHOTO	1827 EL from Kingston to Worthing, Sussex "Per.Millicent" and charged 1/3d with with *** step type 'PORTSMOUTH/SHIP LETTER' on front and on reverse *** S/L 'COMMERCIAL ROOMS' type CR6 which is across join. Superb and most attr & rare.	140.00
111	PHOTO	1833 Entire from Kingston to London 'Per Ship "Simon Taylor" and rated 2/8d with *** step type 'DEAL/SHIP LETTER' on front and**** 'COMMERCIAL BUILDINGS' h.s. type CR7 on reverse. Fine.attr. & rare.	145.00
112	PHOTO	1867 (24 July) from Kingston to Spanish Town with 1d Pine pmk A01 plus cds alongside and 'SPANISH TOWN' cds below. Front shows **** S/L 'TOO LATE' Foster type TL3 (1d value may have been added after postage) Little fragile at edges but an attr. very fine & rare cover.	115.00
113	PHOTO	1902 small comm, cover to Glasgow with Llandovery 1d SG32 FU with 'WALDERSTON' double ring d.s. and with *** to **** 'TOO LATE' h.s. in half moon frame. Small closed tear but a most attr. fine & scarce cover.	55.00

Caribbean Philatelic Auctions, 12 April 1989: Brian Thompson collection of Jamaica

Lot	Photo	Description	Est
		EARLY TRANSIT HANDSTAMPS	
114		1842 (25 Jan) Entire from Carthagen to Bordeaux with 3/3d,6/6d & 3/2d rates. Front shows faint but complete strike type TR2 'CARTHAGENA' plus *** framed 'Packet Letter'. Reverse shows 'KINGSTON' cds type K6 & 'BORDEAUX' cds. Fine & Rare.	115.00
115	PHOTO	1903 PSC from Chile to Barbados via Panama with **** 2 line 'JAMAICA/TRANSIT' h.s. type TR9 on front. Very fine, most attr. & scarce.	57.50
		G.B. (USED IN) ON COVER	
115A	PHOTO	1859 Local Entire with GB 4d Rose in wing margin pair FU and tied by feint 'SAVANNAH LAR MAR' cds. B/S 'KINGSTON' type K8. Cover has been reinforced inside and is little soiled but generally fine & rare.	95.00
		ISSUED STAMPS	
		Q.V 1860/63 ISSUE	
116	PHOTO	1860 Pine. 1d Pale Blue SG1 in superb Mint Blk.10. Few minor perf stains but a very fine and very rare large multiple of this stamp. Cat. £600 plus premium for large multiple.	250.00
117		1860 Pine. 1d Pale Blue SGI VFM ex tiny light corner bend. Cat.£60.	28.00
118	PHOTO	1860-63 Pine. 1d Deep Blue bisected on local cover dated 1862 to Sav.La.Mar. SG1d. B/S KINGSTON & SAV-LA-MAR cds with clear dates. Fine. (PHOTO - FRONT COVER) Cat. £650.	360.00
119		1860-63 1d(4) SG1,1b & 1c. Mint poor to good. One no gum. Cat.£245.	40.00
120		1860 Pine 1d(4) SG1,1a,1b & 1c. Good to FU. Cat. £74.	24.00
121	PHOTO	1860 DIE PROOF - 2d VALUE in Black on White Glazed Card (93 x 61 mm) Very fine & most attr.	250.00
122		1860 2d(2) SG2/2a. Mint with little or no gum. Good colour. Cat.£285	55.00
123		1860 2d SG2/2a.Good or FU. One stamp has short perfs to one side. Cat. £90.	28.00
124		1860 2d SG2/2a. Fair or FU. Cat. £90.	28.00
125		1860 3d SG3. Mint part gum. 2 blunt perfs. Cat. £130.	25.00
126		1860 3d SG3 FU with squat wmk. Cat. £28.	11.00
127		1860 Pine. 3d(2) SG3 showing wmk elongated. FU, one o/c. Cat.£56.	18.50
128	PHOTO	1860 Pine. 4d Brown-Orange SG4. FM h.r. Cat. £200.	75.00
129		1860 4d Brown-Orange SG4. Very good Mint. Cat. £200.	55.00
130		1860 4d(2) SG4/4a. Mint part o.g. or no gum. SG4 is o/c. Cat. £400.	70.00
131		1860 4d(3) SG4/4a. Fair or good used. Cat. £76.	22.00
132		1860 IMPERF PLATE PROOF 6d Pine ovpt SPECIMEN. VFM.	32.00
133		1860 Pine 6d(2) SG 5/5a. Good or FM. One has Imperf side. Cat.£455.	150.00
134		1860 Pine. 6d(3) SG5,5a & 5b. VFU. Cat. £90.	40.00
135		1860 6d SG5. FU o/c. Cat. £18.	6.50
136		1860 1/- SG6 & 6b. Fair or good Mint with squat or elongated wmk. Cat. £630.	160.00
137		1860 1/- SG6,6a & 6b. FU. Cat. £86.	32.00
138		1860 1d,3d,4d & 6d. Fair Used & pmk 'A28','A75' or 'A76'. Strikes mostly **.	7.00
139		1860 Pine 1d,3d(2),4d(2) & 1/-. Fair or Good Used & pmk 'A56'. Strikes mostly ** or ***.	12.50
140		1860 6d SG5b FU & pmk *** 'A42'.	11.00
141		1860 1/- SG6c FU & pmk light 'A28'	14.00
		Q.V.1870/83 & 1883/97 ISSUES	
142		1870-83 Wmk CC. ½d(2),1d,2d(2),3d,4d(2),6d & 1/-. Mint but mostly no gum or little gum. ~ Cat. £841.	90.00
143		1870-83 Set to 1/- with 2 each of ½d,1d,2d & 4d (12v) Generally good or FU. Cat. £44.55.	15.00
144		1870-83 Wmk CC. 3d SG10 FM h.r. Little o/c. Cat. £90.	28.00

Caribbean Philatelic Auctions, 12 April 1989: Brian Thompson collection of Jamaica

Lot	Photo	Description	Est
145	PHOTO	1871 (10 March) cover from Gordon Town, Jamaica to Lt.Col Kent, 77 Regt. Clarence Barracks, Portsmouth with VFU pair Jamaica 6d Mauve, SG12 pmk *** 'A42' oblitt. struck twice. Reverse shows *** 'GORDON TOWN' cds type P5 plus 'KINGSTON' & 'PORTSMOUTH' cds. (This EKD date of use of SG12) Minor peripheral tears but a very fine, most attr. & rare cover (See BCPSG Journal No.133 Dec'84 page 166)	85.00
146	PHOTO	1870-83 Wmk. CC 1/- Dull-Brown with \$ variety. SG13a. FM. Rare. Cat. £1,100.	400.00
147	PHOTO	1870-83 Wmk CC - 1/- showing the \$ variety SG13a pmk A01. VFU. Cat. £700.	350.00
148		1870-83 Crown CC 1/- with \$ variety SG13a. Used with heavy pmk and some short perfs etc. (1964 B.P.A. Certificate stating genuine) Cat. £700.	65.00
149		1870-83 Wmk. CC 2/- SG14 Mint part o.g. Cat. £40.	14.50
150	PHOTO	1870-83 Crown CC 5/- Lilac SG15. FM h.r. Cat. £90.	40.00
151		1870-83 Wmk. CC 5/- Lilac SG15. FM h.r. Cat. E90.	40.00
152		1870-83 Wmk CC 5/- SG15. Used with heavy prak 'A01' corner thin. Cat. C120.	18.50
153		- WMK. CC - 1d(3),2d(2) 8 3d. Mostly good or FU 8 pmk ** or *** 'A52'	7.50
154		- WMK CC - 1d(3),2d(3) & 4d SGI1. Mostly good or FU & pmk *** part or complete 'A73'.	9.50
155		WMK CC - 1d(2),2d(3) 8 4d. Fair or good Used 8 pmk fair 'A75'	5.00
156		- WMK CC on small pieces. Some pmk clear or *** 'A01'. 1d.2d(3), 4d(2) , 1/—(6). Mostly good or FU.	24.00
157	PHOTO	- 1883-97 Wmk. CA Set complete to 5/- with most shades etc. ½d(2), 1d,2d(3),3d(2),4d(2),6d(3),1/-(5,inc. pair),2/- 8 5/-. Most FM or VFM some h.r. Cat. £727.30.	280.00
158		1883-97 1d SC17 Mint but re-gummed. Cat. C350.	80.00
159		- 1883-97 Wmk.CA complete to 1/- with shades etc. ½d(2),2d(7), 3d(3),4d(2),6d(3) 8 1/-(4). Mostly FU or VFU. Cat. approx. £105.	40.00
160		- 1883-97 Crown CA Defs Set "complete to 2/- with all shades 8 values (18v). VFU or FU. Cat. £84.10.	30.00
161		1883-97 Defs Set complete to 1/- with ½d(2),1d(3 inc. SG17), 2d(3), 3d(2_), 4d(2), 6d(2) 8 1/-(2). Good to VFU. Cat. £62.85.	18.50
162		- 1883-97 Crown CA 2/- SG25."FM hTr. Cat. £27.	11.50
163		- 1883-97 Crown CA 2/- SG25 VFU. - Cat. £17.	8.00
164		- 1883-97 Crown CA 5/- Lilac SG26. VFM. Cat. £48.	24.00
165		1883-97 Crown CA 5/- SG26 FU ex missing corner perf at bottom left. Cat. £48.	15.00
165A		. - 1883-97 Wmk. CA ½d pair on local cover pmk *** 'DRY HARBOUR' double ring + coloured PPC of that office. Also ½d on piece with part ½d PSC pmk *** 'NEWPORT' single ring d.s.	9.50
166		1897 Reg. comm, cover to Carlisle with Q.V. 6d SG23a VFU with Reg. oval d.s. etc. B/S. Very fine 8 most attr.	25.00
167	PHOTO	- 1902 Reg. OHMS cover (F/S) to USA with **** 'ON POST OFFICE BUSINESS' cds which partly covered by 3d 8 4d values. VFU with 'JAMAICA/REGISTERED' d.s. Lant type RC6. Little soiled and has crease but attr. fine 8 very scarce. Stamps Cat. £118+ on cover.	36.00
168	PHOTO	Q.V. - 1889 7 1890 "2½d on 4d" ISSUES - 1889-91 Key Plate Set (3v) ovpt SPECIMEN. VFM. Cat.£100.	42.00
169		- 1889 Key Plate Values on 2 Album Leaves with 1d(11), 2d(13, inc. Blk.4) & 2½d(10). FM & FU. Some pmks.	11.00
170		1889 1d Key Plate good Used 8 pmk *** 'A78'.	5.00
171		1893 OHMS cover to USA with 1d Key Plate pair 8 1883 ½d. VFU 8 pmk *** 'KINGSTON' squared circle. Fine.	6.50
172		1889 Key Plate on covers (5) to London or New York. 1d 8 2½d(4). Pmk *** 'SAVANNAH LA MAR' (2) or 'SILOAH' double ring and 'HALF WAY TREE' single ring. Also cover per named German ? Ship. One little toned but generally fine lot.	22.00
173		- 1890 2½d or 4d Varieties - 1st Setting No.6 (2) each showing the 'THICK O' in 'TWO'. SG30. FM or FU.	25.00

Caribbean Philatelic Auctions, 12 April 1989: Brian Thompson collection of Jamaica

Lot	Photo	Description	Est
174		- 1890 2½d on 4d Surcharges - 1st Setting No.2 - 1st 'E' in 'PENCE' 8 1st leg of 1st 'N' in 'PENNY' is shortened. No.7 pmk 'PORT MORANT' squared circle with date. FU.	8.50
175		1890 2½d on 4d Surcharges - 1st 8 2nd Settings SG30/30a FU or VFU. Cat. £25.50.	11.00
176	PHOTO	1890 2½d on 4d Surcharge. 1st Setting normal + 2nd Setting showing 3 errors - 'PFNCE' for 'PENCE'. Broken 'H' in 'Half' & 'PFNNK' for 'PENNY' SG30/30c. FM or FM h.r. Cat. £157+.	62.50
177		1890 2½d on 4d Surcharges - 2nd Setting. No.5 - Shortened 2nd Foot in 'W' 8 No.7 'T' raised and flat top 'C'. FM ex missing corner or crease. Cat. £64 as normals.	17.50 i
178		1890 2½d on. 4d Surcharge - 2nd Setting No.4 FU SG30a. Cat. £17.	7.00
179	PHOTO	1890 2½d on 4d Surcharge showing variety 'Surcharge Double' SG30b. FM h.r. Cat. £325.	140.00
180	PHOTO	- 1890 2½n 4d Surcharge showing Variety 'Surcharge Double' SG30b. FU with 1945 Royal Certificate. Cat. £225.	120.00]
181	PHOTO	1890 2½d on 4d Surcharge showing Variety 'Surcharge Double' SG30b. VFU. Cat. £225.	120.00
182	PHOTO	1890 2½d on 4d Surcharge showing 'PFNNY' for 'PENNY' SG30c. VFU. Cat. £65.	32.00
183	PHOTO	1890 2½d on 4d Surcharge showing 'PFNNY' for 'PENNY' SG30c. VFU 8 pmk 'A73' Cat. £65.	32.00
184	PHOTO	1890 2½d on 4d Surcharge showing 'PFNNK' for 'PENNY' SG30ca. FU. Cat. £110.	52.50
		Q.V.POSTAL FISCAL 8 OFFICIAL ISSUES	
185		1855-74 FISCALS, 1½d 8 3d SGF4/5c. FU but clipped perfs. Cat.£95.	20.00
186	PHOTO	1889 local cover to Colonial Bank, Kingston with Jamaica REVENUE 1d Rose pair VFU 8 pmk *** 'MILE GULLY' squared circle pmks. B/S. Very fine,attr. 8 rare.	85.00
187	PHOTO	1896 (11 March) local Reg. cover from Spanish Town to Capt.Marshall R.A. The Ordnance,Kingston with Q.V. ½d 8 FISCAL STAMPS - 1½d 8 3d SG F4b 8 F5b (little rubbed) with 'SPANISH TOWN' double ring d.s. **** oval 'JAMAICA/REGISTERED' etc. (1980 Royal P.S. Certificate stating genuine) Little soiled but otherwise attr. fine 8 rare.	85.00
188		1900 cover to Haiti with 3d Fiscal Used with heavy 'KINGSTON' pmk. Fine 8 quite attr. Scarce.	16.50
189	PHOTO	1890 OFFICIAL - ½d Green showing error 'Overprint Inverted' SGO1e. VFU. Cat. £60.	32.00
190	PHOTO	1890-91 OFFICIAL OVPT Set complete to 2d (3v) SG03-05 ovpt SPECIMEN. VFM h.r. Cat. £100.	48.00
191		1895 OHMS cover to Boston,USA with ½d OFFICIAL SG03 VFU with cds. Very fine 8 attr.	14.50
		1900-01 LLANDOVERY ISSUE	
192		1900-01 Llandoverly 1d(2) SG31/32 ovpt SPECIMEN. FM h.r. Cat.£130.	52.50
193		1900-1 Llandoverly 1d on Blued Paper SG32a. Light crease, otherwise VFM. Cat. £110.	40.00
194	PHOTO	1900-01 Llandoverly 1d on Blued Paper SG32a. Superb Used. Cat. £100.	48.00
195		1904 PPC - 'King Street, Kingston' VFU to London with 1d Llandoverly FU with 'MORANT BAY' double ring d.s. Fine.	5.00
196		1906 (10 May) PPC - 'Gordon Town,St.Andrews' VFU to Devon with 1d Llandoverly SG32 VFU with *** 'STREET LETTER BOX KINGSTON/JAMAICA' type SLB4. Very fine.	18.50
197		1906 coloured PPC - 'Constant Spring Hotel' VFU to Sussex with 1d Llandoverly SG32 VFU 8 pmk *** 'UP PARK CAMP' squared circle. Fine.	6.50
198		POSTMARKS - small collection of LLANDOVERY 1d SG32 (47) on 4 Album Leaves with double ring or single ring d.s. from A-T. Strikes are*** or **** and mostly 100% or 80% complete. Many small offices. Inc. Blk.8 (ST ANNS BAY). CONSTANT SPRING 8 MONTEGO ABY in Blue etc. Very fine 8 attr. lot.	28.00

Caribbean Philatelic Auctions, 12 April 1989: Brian Thompson collection of Jamaica

Lot	Photo	Description	Est
199		POSTMARKS - similar collection on LLANDOVERY 1d SG31 (38) from A-W. Strikes mostly *** or **** and 80% or 100% with single ring or double ring d.s. Many small offices ie. SOUTH FIELD, BURNSIDE, GREEN ISLAND etc. Very fine 8 attr.	18.50
		ARMS ISSUES - 1903/4 8 1905/11	
200	PHOTO	1903-4 Arms type Set complete to 5d (4v) ovpt SPECIMEN. Superb UM. Cat. £90.	40.00
201		1903-4 Arms Set complete to 5d in Blks.4 VFM ex 2½d FM with gum toning. Cat. £64+.	29.00
202		1903-4 Arms Set complete to 5d(4v) FM some h.r. Cat. £16.	6.75
203		1903-4 Arms ½d in marg strip of 3, centre stamp showing 'SER.ET' for 'SERVIET' error. SG33/33a. FM. Cat. £43.50.	18.50
204		1903-4 Arms 1d in marg. strip of 3. Centre stamp showing 'SER.ET' for 'SERVIET' error. SG34/34a. (Pear shaped dot) FM. Cat. £35.50.	16.00
205		1903-4 1d 'SER.ET' variety SG34a FM but little gum toned. Cat.C32.	11.00
206		1903-4 Arms type 1d with 'SER.ET' variety SG34a FU. Cat. £35.	16.00
207		1903-4 1d Arms with 'SER.ET' variety SG34a. Very good Used. Cat. £35.	13.50
208		1903-4 Arms type - 2½d in marg Blk.9 centre stamp showing 'SER.ET' variety SG35/35a. VFM. Cat. £76+.	38.00
209		1903-4 Arms 2½d in pair. R.H. stamp showing 'SER.ET' for 'SERVIET' error with 'Pear shaped dot' SG35/35a FM but little gum toned. Cat. £62.	24.00
210		1903-4 Arms 5d SG36 in marg Blk.4 VFM ex one stamp has light crease Cat. £48+.	20.00
211		1903-4 Arms 5d SG36 in pair. VFM s.h.r. Cat. £24.	11.00
212		1903-4 Arms Set complete to 5d (4v) FU. Cat. £26.	11.50
213	PHOTO	1905-11 MCA Arms type Set complete to 5/- (5v) ovpt SPECIMEN.FM h.r ex 5/- little gum. Cat. £150.	40.00
214		1905-11 Arms Set complete to 5/- inc. 3 x 2½d (IOv) VFM or FM. Cat. £87.50	38.00
215		1905-11 Arms type ½d in pair, one stamp with 'SER.ET' error (with heavy pear shaped dot) SG37/37a. Mint part o.g. Cat.£34.50.	11.50
216		1905-11 6d Arms type SG44. FM h.r. • Cat. £10.	4.00
217		1905-11 6d SG44 in Plate Blk.4. Generally FM but 2 stamps have crease. Cat. £40.	14.00
218		1905-11 Arms 5d SG43 VFM. Cat. £23.	9.75
219	PHOTO	1905-11 ARMS TYPE VARIETY - 5d Grey & Orange-Yellow in Blk.9, the centre stamp showing 'SER.ET' error for 'SERVIET' SG43/43a. Slight toning but generally FM. Probably Unique in Blk.9. Cat. as singles £984.	430.00
220	PHOTO	1905-11 Arms 5/- SG45 in centre marg. Blk.4. VFM. One stamp minute corner crease. Cat. £160+.	72.50
221		1905-11 Arms 5/- SG45. FM h.r. Cat. £40.	16.50
222	PHOTO	1905-11 Arms type - 5/- SG45 in VFU Blk.4. Cat. £120.	48.00
223	PHOTO	1905/11 5/- Arms SG45 in FU Blk.4 pmk *** part 'PARCEL POST OFFICE' double ring d.s. Reverse little browning. Cat. £120+.	50.00
		1905/11 Q.V. ISSUE	
224	PHOTO	1905-11 Q.V. Set complete to 2/- (6v) ovpt SPECIMEN VFM or FM h.r. Cat. £170.	80.00
225		1905-11 Q.V. 3d SG47 in UM Blk.4. Cat. £17+.	7.50
226		1905-11 Q.V. 4d(3) SG48.49 & 50 VFM or FM h.r. Cat. £70.25.	32.00
227		1905-11 Q.V. 4d SG48 FM h.r. Cat.£60.	25.00
228		1905-11 Q.V. 4d(3) SG48.49 & 50 VFU or FU. Cat. £69.50.	32.00
229		1905-11 Q.V. 6d(2) SG51/51a FM. Cat. £37.	16.50
230		1905-11 Q.V. 1/- (2) SG53/54 VFM or FM. Cat. £20.	8.50
231	PHOTO	1905-11 Q.V. 1/- with JUDICIAL OVPT and showing the \$ variety SG53b. Very fine.Unusual item & rare with JUDICIAL ovpt. Normal Cat. £900.	150.00
232		1905-11 Q.V. 1/- SG54 in centre marg Blk.4. VFM h.r. One stamp light corner crease. Cat. £16+.	6.50
233		1905-11 Q.V. 2/—(2) SG55/56. VFM or FM h.r. Cat. £99.	45.00

Caribbean Philatelic Auctions, 12 April 1989: Brian Thompson collection of Jamaica

Lot	Photo	Description	Est
234		1907 (21 March) Reg.cover to UK. Via America 'per S.S. "Prinz Sigismund" with QV3d SG46 FU pmk *** 'RICHMOND' double ring d.s. B/S. Very fine & attr.	13.50
235		1909 Reg. cover to UK with QV 3d SG46 VFU with *** 'LUCEA' double ring d.s. & Reg. Label which is little torn. B/S. V.Fine.	13.50
236		1911 (7 April) Reg. cover to London with 3d SG47 FU & pmk *** 'FALMOUTH' double ring d.s. plus oval 'R' & B/S. Fine & attr.	13.50
		1911 KEVII & 1912/20 KGV ISSUES	
237		1911 KEVII 2d Grey SG57 in VFM centre marg. BLK.12 (2 x 6) Cat.£33.	16.00
238		1911 KEVII 2d Grey SG57 Plate Blk.4 UM but gum toned. Also 2 copies FM or FU. Cat. £26.75.	11 .00
239		1912-20 KGV DEFS COLLECTION on 3 Album Leaves complete to 5/- with large number of colours, shades etc. Inc. 1d(7), 1½d(3), 2d(5), 2½d(4), 3d(10),4d(9),6d(6),1/- (7),2/- (3) & 5/- (2). VFM or FM h.r. Very high Cat. value & fine collection.	57.50
240		1912-20 KGV DEFS COLLECTION on 2 Album Leaves complete to 5/- with 1d(4), 1½d(5) ,2d(3) ,2½d (5) ,3d(5) ,4d(5) ,6d(5), 1/- (8) ,2/- (2) & 5/-. Very high Cat. value & fine lot.	48.00
241		1919 small Reg. comm, cover to USA with defs 1d pair & 2½d FU with 'MONTEGO BAY' d.s. & Reg. Label etc. Very fine.	8.50
242		1919 Reg. comm, cover to USA with 1½d & 3d defs FU with *** 'DUNCANS' double ring d.s. plus Reg. Label etc. Generally fine.	8.50
		WAR TAX & RED CROSS ISSUES	
243		1916 WAR TAX - 3d Lemon Paper SG69a in VFU Blk.4 on large part 1918 Front pmk MONTEGO BAY. Stamps Cat £30 off cover. Fine.	18.50
244		1916 WAR TAX - 1½d SG71 with variety 'Wmk Inverted' in VFU Blk.4 One stamp also shows variety 'white flaw' from ornamental border to Kings Ear' Plus illustration & notes.	70.00
245		1917 WAR TAX 1½d SG71. 'NO STOP' varieties on Album Page. Includes 6 pairs UM or VFM and 3 FU singles. All with variety plus heavy impressed 'P'. Cat. £46.50.	24.00
246		1916 WAR TAX - 1½d value SG71 Plate Blk.6 with 'NO STOP' varieties on No.48 & 54 plus ' malformed MP' Also 2 pairs with 'NO STOP' and possible 'd for p'.	18.50
247		1916 (1 Sept) WAR TAX - 1½d SG71 - Gutter Blk.12 & strip 3 showing Varieties - showing 'NO STOP' (2), 'MINUTE STOP', 'Broken P' (2) on album leaf with notes. UM.	9.75
248		1915 (22 Dec) Red Cross Label with Biplane & "Jamaica" in red used on piece with 1912 1d.Fine.	7.50
249		1916 (15Jan) Red Cross Label with Biplane and "Jamaica" in Black used on small piece with ½d WAR STAMP. Fine.	7.50
250		Ditto but used on piece with 1912 1d. Fine.	7.50
251		Ditto but used on piece alone. Also further copy VFU.	7.50
		1919/21 & 1921/29 PICTORIAL ISSUES	
252		1919-21 Crown CA Defs complete to 2/- (9v) FU or VFU. Cat.£37.90.	16.50
253		1919-21 1½d SG80 UM marg. copy showing variety 'Reversed Wmk'	20.00
254		1919-21 1½d SG80 with variety 'CMBARKING' for 'EMBARKING' VFU.	25.00
255		1919-21 1½d SG80 in corner Blk.6 2 stamps showing the 'CMBARKING' for 'EMBARKING' variety. VFM ex one stamp has couple of stains on gum side.	52.50
256	PHOTO	1919 IMPERF COLOUR TRIAL - 2d PICTORIAL in Purple & Indigo mounted on thick card & ovpt SPECIMEN. Very fine & attr.	48.00
257	PHOTO	1919 2d Pictorial value IMPERF COLOUR TRIAL in Purple & Indigo on thick wove Unwatermarked paper. Very fine & attr.	65.00
258		1919-21 2d value SG81 with variety 'Inverted & Reversed Wmk' FM h.r.	18.50
259		1919-21 2d SG81 with variety 'HOOSE' for 'HOUSE' FM h.r.	16.50
260		1919-21 2d SG81 with variety 'HOOSE' for 'HOUSE' Used but has thin at edge.	6.50
261	PHOTO	1919 IMPERF COLOUR TRIAL - 2½d PICTORIAL in Myrtle & Orange-Brown mounted on thick card and ovpt SPECIMEN. Very fine & attr.	48.00

Caribbean Philatelic Auctions, 12 April 1989: Brian Thompson collection of Jamaica

Lot	Photo	Description	Est
262		1919-21 Wmk. CA - 2/- (2 shades SG86 FM h.r. Cat. £26.	10.00
263		1919-21 Wmk CA - 3/-(3) - shades - violet blue & orange + light violet & orange(2) SG87. FM h.r. Cat. £81.	36.00
264		1919-21 Crown CA - 5/-(2) SG88/88a. FM or FM h.r. Cat. £90.	40.00
265		1919-21 Crown CA - 5/- SG88. FM h.r. Cat. £48.	22.00
266		1919-21 Crown CA - 5/- SG88 VFU but o/c. Cat. £48.	20.00
267	PHOTO	1919-21 Crown CA - 10/- SG89 VFM h.r. Cat. £75.	36.00
268		1919-21 Wmk CA - 10/- SG89 FM h.r. Cat. £75.	32.00
269	PHOTO	1919-21 MCA Pictorial Def 10/- value SG89. Superb Used. Cat. £140.	
270	PHOTO	1919-21 Wmk Crown CA 10/- SG89. VFU Cat. £140.	75.00
271	PHOTO	1920 MCA Pictorial 10/- SG89 FU Cat. £140.	70.00
272	PHOTO	1921 UNISSUED 6d ABOLITION OF SLAVERY on Mult CA Paper Ovpt SPECIMEN reading upwards. Generally FM. Cat. £550.	250.00
273	PHOTO	1921 UNISSUED 6d ABOLITION OF SLAVERY on Script CA Paper ovpt SPECIMEN reading downwards. Slight gum toning, otherwise VFM. Very scarce. Cat. £550.	250.00
274		1921 6d SG90 in marg. Blk.4. FM. Cat. £26.	11.50
275	PHOTO	1921-29 Script CA Set complete to 10/- (13v) ovpt SPECIMEN. VFM h.r. Cat. £250.	125.00
276	PHOTO	1921 IMPERF PLATE PROOF of Vignette in Blue of 6d Port Royal on White Card. Very fine, most attr. & very scarce.	77.50
277	PHOTO	1921 IMPERF PLATE PROOF of Vignette in Blue of 6d Port Royal on White Card. Very slight crease, otherwise fine, attr. & very scarce.	70.00
278		1921-29 Script CA 6d values - SG98/98a. VFM or FM h.r. Cat. £21.	9.00
279		1921 6d SG98 Port Royal in vertical pair. Shows 'scratched Plate' VFM.	7.50
280		1921-29 Script CA - 2/- & 3/-(2). Latter shows diff. shades. VFM. Cat. £23.	11.00
281		1921-29 5/-(2) SG102b & c. VFM. Cat. £44.	20.00
282	PHOTO	1921-29 Script CA - 5/-(4) SG102, 102a, 102b & 102c. VFU or FU. Cat. £118.	52.50
283		1921-29 Script CA 10/- SG103. VFM s.h.r. Cat. £45.	22.00
284		1921-29 10/- SG103 VFU centred to top. Cat. £60.	25.00
285		1919-36 3 comm, covers used to USA (one Reg). Inc. 1919 with 19121d & 1919 1½d VFU & pmk *** 'RIO BUENO' double ring d.s. 1928 with 2½d value VFU pmk 'PORT ANTONIO' double ring d.s. & 1936 with 1921 4d, 1/- & 2/- plus 1832 6d pair VFU & pmk *** 'MYRTLE BANK' double ring d.s. Fine lot.	19.50
		1923/35 KING GEORGE V ISSUES	
286	PHOTO	1923 Child Welfare Set ovpt SPECIMEN in Red. VFM h.r. Cat. £125	60.00
287		1923 Child Welfare Set. FM. Cat. £12.50.	6.00
288		1923 Child Welfare ½d & 2½d values. VFU. Cat. £28.50.	13.50
289	PHOTO	1924 (16 Jan) Child Welfare Set VFU on 3 covers (one value for each) each cover with 2 pairs of value and pmk *** 'KINGSTON' double ring d.s. Very fine, most attr. & very rare. (Exhibition item). Stamps Cat. £700 on cover.	165.00
290	PHOTO	1926 (27 Feb) Child Welfare on Reg. cover to USA with extra ½d FU with Reg. d.s. B/S. Little soiled but very scarce on cover and Cat. £192+ as such.	13.50
291		1927 ½d SG107 in gutter Blk.4 one stamp showing 'BOW' variety. VFM.	13.50
292		1927 ½d SG107 in FM pair one stamp with 'BOW' variety.	
293		1927 ½d SG107 in Blk.6 one stamp showing 'BOW' variety FM but gum toning..	22.00
294		Ditto but with 'BOW' & 'frame' variety.	28.00
295		1927 ½d SG107 showing 'BOW' variety. FM.	
296		1927 ½d SG107 in VFU pair one stamp showing 'BOW' and 'frame' variety.	14.50
297		Lot withdrawn.	
298		1935 Silver Jubilee 1½d value in corner Blk.4 one stamp showing 'Double Flagstaff' variety SG115/115a. FM but very slight gum toning. Cat. £70.75.	35.00
299		1930/37 comm, covers (3 inc. 1 Reg) to UK or Jamaica Railway. Inc. 1d strip 3 SG108 pmk *** 'MANDEVILLE' double ring, ½d SG107(2 pairs) + 1932 6d pmk 'KINGSTON' 8 1927 ½d, 1932 1d & 1½d plus 1932 2½d pair VFU 8 pmk 'KINGSTON' Very fine lot.	16.50
300		1936 Reg. cover to Birmingham with Silver Jubilee Set VFU & pmk *** 'PORT ANTONIO' double ring d.s. B/S. Very fine.	10.00

Caribbean Philatelic Auctions, 12 April 1989: Brian Thompson collection of Jamaica

Lot	Photo	Description	Est
301		1935 FDC to Egypt with Silver Jubilee Set. VFU & pmk **** 'WINDWARD ROAD' double ring d.s. (name excise only) Very fine.	12.50
		KING GEORGE VI ISSUES	
302		1938-52 Defs Set complete to £1 (18v) UM or VFM. Cat. £35.	17.50
303		1938-52 1½d light Red-Brown (formerly SG123a) VFM s.h.r.	30.00
304		1938-52 6d with 'TAIL PIPE' variety FU.	8.50
305		1938-52 KGVI Defs - 1/- SG130 in marg. corner vertical pair, upper stamp showing the scarce 'Broken Chimney' variety. UM or VFM. Corner crease in marg.	24.00
306		1938-52 KGVI 1/- with 'Broken Chimney' variety. Used but little soiled and few blunt perfs.	10.00
307		1938-52 KGVI Defs 5/- SG132 in VFM Blk.4 ex couple minor gum bends. Cat. £18.	7.50
308		1949 £1 Def SG133a. VFM. Cat. £22.	10.00
309	PHOTO	1950 local cover with 1949 £1 def value SG133aa FU 8 pmk *** 'LASCELLES' double ring d.s. Some perfs show slight staining otherwise a fine, attr. 8 scarce cover.	24.00
310		1938-52 KGVI STAMP BOOKLET (type IX) - with 18 x 1d plus 12 x ½d. Superb Mint.	9.50
311		1938-52 BOOKLET with 18 at 1d 8 12 at ½d. Type IX. Superb Mint.	9.50
312		1948 Royal Silver Wedding Set. VFM s.h.r. Cat. £23.20.	9.75
313		1948 Royal Silver Wedding £1 value. VFU. Cat. £42.	19.50
314		1949 Reg. cover to USA with 5/- New Constitution SG139 VF11 with *** 'SPANISH TOWN' double ring d.s. plus Reg. Label. B/S. V. Fine.	7.50
315		1937-52 KGVI FDC's - Coronation (3, diff. pmks), UPU, University 8 Scouts (with 'BRIGGS PARK' TRD) Mostly fine 8 attr.	4.50
316		1945 Victory Set in Blks.4 VFU on 2 Reg. 'Patriotic' FDC's. Pmk HALFWAY TREE. Very fine 8 attr.	7.50
317		1945 (20 Aug) New Constitution Set complete to 10/-. Superb Used on local FDC pmk *** 'KINGSTON' double ring d.s. Very fine 8 attr.	11.00
318		1948 (1 Dec) Royal Silver Wedding Set VFU on 2 FDC's, one Reg. with 1½d Blk.4 8 £1 on other. Fine.	36.00
		QUEEN ELIZABETH II ISSUES	
319		1956 Defs Set complete to £1 (16v) VFM or FM h.r. Cat. £25.	9.75
320		1956 8 1964 QEII STAMP BOOKLETS (2) with 6 x ½d, 1d, 2d 8 2½d or 6 x 1d, 2d 8 3d. VFM.	11.50
321		1962/63 Independence Ovpts 1d 8 2yd values each in Plate Blks.10. One stamp in each showing 'wide 9' variety. UM.	17.50
322	PHOTO	1964 DEFS - VARIETY - 1d value showing 'major displacement of green colour' in corner pair. Normal pair for comparison. UM.	45.00
323	PHOTO	1964 1½d def in corner Blk.6, each of bottom stamps showing the very rare 'Double Perfs Rows' UM.	48.00
324		1964 Defs - 6d Butterfly with 'Blue Colour Missing' SG223a. UM. Cat. £35	20.00
325		1964 6d Butterfly in Plate Blk.4 with 'Inverted Wmk' variety. UM.	24.00
326		1964 6d Butterfly showing 'Inverted Wmk' variety. Marg. UM.	5.00
327	PHOTO	1960 STAMP CENTENARY VARIETY - 6d value in corner pair. One stamp complete offset and the other part offset on back.	45.00
328	PHOTO	1968 UNISSUED HUMAN RIGHTS SET of 3 plus the Issued Set. Superb UM.	85.00
329		1981 BOOKLET. Royal Wedding. Superb Mint.	5.00
330		1959 Reg. Brown OHMS covers (F/S+) to USA with 1956 £1 Def 8 BWI Fed 2d(3). Also 1956 2½d (Blk.4), 1/-, 1/6d & 3/- plus 1960 Stamp Centenary 6d (Blk.10). Very fine 8 attr. (2 covers)	7.50
331		1962_3 Reg. covers to UK or USA with Caribbean Games or Miss World Min/S (former scarce) with cds 8 LIGUANEA or KINGSTON Reg. Labels. B/S. Fine. (2 covers)	9.50

Caribbean Philatelic Auctions, 12 April 1989: Brian Thompson collection of Jamaica

Lot	Photo	Description	Est
332		1953/73 QEII FDC's (17) - Coronation.Royal Visit. Tercentenary,(TRD), BWI Federation,(special pmk),Stamp Centenary. Red Cross, Miss World (2 inc. Mecca Card), Parliamentary Conference, Human Rights, Royal Visit. Churchill,Scouts(TRD). Jamaica Letter, Police. Human Rights, Labour Day & NANNYTOWN EXPLORATION cover with TRD's etc. V. Fine.	8.50
333		1967 covers(3) with Constabulary Force in Blks.4 used to USA. Very fine.	2.50
		PICTURE POST CARDS	
334		PPC (Valentines Series) - 'Great Earthquake Disaster. Burnt Car. King Street, Kingston' VFM. Scarce. Early coloured PPC's - Raphael Tuck (Oilette) one used in 1908	7.50
335		'Huts on a Country Road', 'Arcadia' & 'Great House, Vale Royal' Fine.	7.50
336		Photo PPC's - 'Banana Loading', 'Bowden' & 'North Bay' VFM.	7.50
337		Coloured PPC's (2) - 'Kingston Harbour. Kingston' & 'Mandeville' VFM.	5.00
338		Coloured PPC's (3) - 'Travellers Palm', 'Banana Boat at Port Antonio' & 'Road to Bog Walk'. VFM.	7.00
339		PPC's (2) - 'Photogravure - 'Riding Party. Mandeville,Manchester' & 'A Banana Plant where its worth was first recognised' VFM.	4.00
340		Coloured PPC's (3) UPU by A.Duperly - 'Paw-Paw Tree', 'Banana Blossoms and Fruit' & 'Bunch of Bananas Ready for Cutting' VFM.	7.50
341		Coloured PPC's (2) UPU by A. Duperly - 'Paw-Paw Tree' & 'Banana Blossoms and Fruit' VFM.	5.00
342		Coloured PPC's (3) by A. Duperly - 'Resting after a Days Work on Banana Field' , 'Blue Hole, Port Antonio; 20 Fathoms Deep' & 'Cocoanut Grove on the Road to Morant Bay' VFM.	7.50
343		Coloured PPC's (4) UPU by A. Duperly - 'Palm Avenue, Port Antonio', 'King Street, Kingston showing Public Building', 'Myrtle Bank Hotel, Kingston' & 'Castleton Gardens,19 miles from Kingston' VFM.	9.00
344		Coloured PPC's (3) UPU by A.Duperly - 'Governors Residence,Kings House,Kingston', 'Banyan Tree, Victoria Park' & 'King Street, Kingston showing Public' VFM.	7.50
345		Coloured PPC's (2) by Cleary & Elliott - 'By Road and River. Trelawny' & 'Myrtle Bank Hotel' VFM.	5.00
346		Coloured PPC's (2) by Raphael Tuck - 'A Scene in the Government Botanical Gardens, Castleton' & 'Priestmans River, North Coast, Portland' FM.	5.00
347		Coloured PPC's - 'White River, St.Ann', 'Castleton Gardens' & 'Tower Isle Hotel' FM.	6.00
		FIRST FLIGHT COVERS	
348	PHOTO	1930 (29 Nov) FFC Haiti to Jamaica per FAM Route 3 etc (98 flown) Very fine & attr. with *** flight cachets & signed. B/S.	32.00
349		1930 (2 Dec) FFC - FAM Route 5 Miami-Cienfuegos-Kingston with *** illustrated boxed cachets on front & cachet on reverse with cds. Very fine & attr.	22.00
350		1930 (2 Dec) similar cover but with *** 'RETURN TO SENDER' on front. Very fine & attr.	22.00
351		1930 (3 Dec) FFC Canal Zone to Jamaica with *** cachet. B/S. Canal Zone stamp shows the rare Ovpt. See Scott C2. Fine.	28.00
352		1930 (10 Dec) FFCvia FAM 5 addressed to La Guaira,Venezuela with usual KINGSTON/MIAMI cachet amended with bar to CANAL ZONE(unusual cover as does not show it was from Canal Zone Mail Bag and is B/S La Guaira) Little soiled but generally fine & scarce.	24.00
353		1930 (10Dec) FFC from Kingston to London with 4d Pictorial pair VFU pmk *** KINGSTON Index 2B plus *** JAMAICA/MIAMI Map cachet and with GB 8d KGV value on reverse with cds. Very fine & attr.	11.50
354		1930 (10 Dec) FFC Jamaica to Miami with 4d Pictorial pair VFU with *** KINGSTON cds and usual *** cachet. Addressed to UK. Very fine & attr.	11.50
355	PHOTO	1930 (10Dec) FFC Jamaica to Antigua with 2jd & 1/- Pictorials VFU with cds & *** large cachet. Very fine (36 flown).	32.00
356	PHOTO	1930 (10 Dec) FFC Jamaica to Dominican Republic with 1/- Pictorial & 1927 ^d VFU with cds & *** large cachet. B/S. Very fine.	32.00

Caribbean Philatelic Auctions, 12 April 1989: Brian Thompson collection of Jamaica

Lot	Photo	Description	Est
357		1930 (10 Dec) FFC Jamaica to Dutch Guiana with 6d & 1/- Pictorials & 1929 1½d. All VFU with cds & *** large cachet. B/S. (64 flown) Very fine.	32.00
358		1930 (10 Dec) FFC Jamaica to Trinidad with 4d & 1/- Pictorial + 1929 1d all VFU with cds & *** large cachet. B/S. Fine.	28.00
359		1930 (10 Dec) inv. "30" FFC Jamaica to USA with 2jd Pictorial (6,inc. strip 4) plus 1929 1d Pair VFU with cds and usual MIAMI cachet. Fine.	13.50
359A		1930 (10 Dec) inv. "30" FFC from Jamaica to USA with ½d, 2½d & 6d values VFU with cds and with **** large cachet. Very fine & attr. B/S.	13.50
360		1930 (10 Dec) FFC Jamaica to USA with WAR TAX 1½d & 3d pairs FU with KINGSTON cds. Usual *** MIAMI cachet. Little soiled and some light staining on reverse. Quite attr.	9.50
361		1930 (10 Dec) FFC via FAM5 on Northbound flight from Jamaica to USA rated 9d with cds & *** JAMAICA/MIAMI cachet. Fine.	11.00
362		1931 (28 Jan) Reg. FFC French Guiana to Jamaica with typed cachet, 3f & IOF values. Reg. Label & pmk 'CAYENNE' B/S. Very fine & attr.	30.00
363		1931 (2 Jan) FFC via PAA Trinidad to Jamaica with Trinidad 3d & 4d(2) defs VFU with cds & typed cachet. B/S. Very fine & attr.	22.00
364		1931 (24 Feb) Flight cover from GB to Constant Spring, Jamaica with 9d GB & cds (1st 9d inclusive rate) B/S. Very fine & attr.	11.50
365		1931 (29 June) Reg. FFC from San Salvador to Jamaica with *** Reg. & Flight cachets. Very fine. B/S.	28.00
366		1931 (19 Nov) Flight cover via P.A.A. Clipper from Jamaica to Canal Zone with 3d & 9d values & cds. B/S. Large 'RETURN' h.s. on front. Fine & attr. but little soiled.	14.50
367		1932 (8 Aug) FFC from Santo Domingo to Jamaica with cachets & B/S. Very fine & attr.	28.00
368		1939 (1 June) FFC via FIRST TRANSANTIC-JAMAICA to EUROPE with 2/- defs VFU with cds & **** oval flight cachet. (362 flown) Fine & attr.	13.50
369		1941 (3 Feb) Survey Flight-New York-Nassau-Jamaica-Panama via American Export Airlines. Arrival and Postings at various destinations etc. B/S. Fine & scarce cover.	30.00
369A		1943 FFC by KLM addressed to USA with 1/- def FU with cds. Attr. printed cachet 'K.L.M./Royal Dutch Air Lines/Willemstad, Curacao, N.W.I./Oranjestad, Aruba, New York' Fine & attr.	7.00
370		1946 (1 Nov) Proving Flight via PAA from USA to Jamaica with US 10c, Jamaica 4d pair and RETURN TO SENDER. B/S. Fine.	9.50
371		1948 (31 July) FFC via Delta Airlines 1st Jet Flight FAM 31 from Houston via Havana to Kingston. B/S. Very fine & attr.	12.50
371A		1949 FFC from Jamaica to USA via B.C.A. with 6d value etc. & **** boxed cachet 'FIRST FLIGHT/BRITISH CARIBBEAN AIRWAYS LTD/Kingston, Ja-Miami, Fla/April 1, 1949' Very fine & attr.	8.50
372		1950 (2 April) FFC Jamaica to Nassau, Bahamas with 2d & 6d defs VFU with cds & **** large boxed cachet. Very fine & attr. B/S.	12.50
373		1950 (8 April) FFC via BOAC Jamaica-London with Silver Jubilee 1/- & 1945 3d VFU with cds & **** large boxed cachet. No flap but very fine & attr.	12.50
374		1959 (3rd Dec) FFC from Kingston to Montreal via B.O.A.C. with Royal Visit 2d + 1956 1d & 6d VFU with KINGSTON cds. Very fine but flap is torn.	6.50
375		1959 (11 Dec) FFC by PAA 707 from Miami to Montego Bay. Very fine & attr. B/S.	11.50
376-		1966 (11 Jan) FFC via Luftansa USA to Jamaica with *** cachet. Fine & attr. B/S.	9.50
377		1966 (12 Jan) FFC via Lufthansa Chile to Montego Bay, Jamaica with cachet etc. Fine.	13.50
378		1966 (1 May) FFC via Air Jamaica to Miami and returned via Dead Letter Office, New York with *** cachets and **** oval 'FIRST FLIGHT/ AIR JAMAICA' TRD. B/S. Very fine & attr.	11.50
		<p>POSTAGE DUE" MARKINGS</p> <p>" The following A lots all show the Rare WOODBLOCK POSTAGE DUE MARKINGS with the types listed by Reg. Lant in his study of these in which Brian Thompson participated</p>	

Caribbean Philatelic Auctions, 12 April 1989: Brian Thompson collection of Jamaica

Lot	Photo	Description	Est
379	PHOTO	- 1918 cover from Texarkara to St. Ann's Bay, Jamaica with **** 2d' Woodblock Postage Due Marking without full stop in violent. Lant type D8f (Very early date and only recorded example) B/S. Very fine, most attr. & very rare.	75
380	PHOTO	1940 cover from Savanna-La-Mar to Bristol with '1'. No *D' pence sign. Lant type D8c (only 3 examples recorded) Stamp and cds on reverse. Little soiled.	48
381-	PHOTO	1941 cover from Stonehenge P.O. (St.James) to Mandeville with light but *** '2d' Woodblock Postage Due Marking in violet ink Lant type D8h (only one other copy recorded) B/S etc. Very fine, attr. & very rare.	65
382	PHOTO	1944 Postcard from Chicago to Half Way Tree with *** double ring d.s. (no year plug) plus U.S. markings and Woodblock Postage Due marking '1d' in violet. Lant type D8e (only 3 examples recorded) Very fine, most attr. & rare.	55
383		1913 cover from Old Harbour to USA with *** but light 'T/JAMAICA' 'CENTIMES 30' h.s. type D9 on front plus U.S. Postage Due. B/S.	16.50
384		Fine. 1929 comm, cover from Darliston to Bristol with 1d pmk squared circle of same office with *** type D 9b plus UK'2d Due stamp etc.	16.50
385		Very fine & attr. 1935 Front from Harkers Hall to UK with Silver Jubilee 1d pmk ***	15
386		D.ring of above office plus light but ** type D9b. Fine. 1936 cover from Cross Roads to USA with 'T/JAMAICA' 'CENTIMES 20' type D9b & New York Due h.s. etc. on front. Shows KGV 1½d 1929 issue and cds. Fine.	15
387		1945 ? comm, cover from Kingston to USA. Rated 2d New Constitution value with cds plus *** 'T/JAMAICA' 'CENTIMES 20' type 9c. Very fine & attr.	13.50
388		1955 cover from Kingston to London rated 2½d with *** boxed 'RETURNED FOR/ADDITIONAL POSTAGE' Lant type DA4. Very rare.	16.50
389		Only 2 known. Fine & attr. B/S. 1955/63 covers to USA or UK. First with fair type DA 8b & D9e. Also with the very rare & **** boxed 'Returned for additional postage' etc. Lant type DA 5a. Very fine & attr	15
390		1957 covers(2) to UK or Canada with 'INSUFFICIENTLY PAID FOR/TRANSMISSION BY AIR MAIL' & Due h.s. type DA 8b(2) & D9e. Very fine & attr. pair.	11.50
390A		1951 cover from Jamaica to Chicago,USA with ^d def and 2d University value with HALFWAY TREE cds with clear date plus *** 'T/JAMAICA' 'CENTIMES 18' in 2 circles to make up rate. Fine, attr. & scarce.	15
391		1953/74 small collection on 4d Album Leaves with diff. types of boxed 'INSUFFICIENTLY PAID/FOR TRANSMISSION BY/AIRMAIL' Strikes mostly *** or Types DA8,DA9 & D12b(2). Fine lot.	28
		MARITIME MAIL	
392		1927 PPC to USA with US 2c with 'PAQUEBOT' cds and alongside *** cachet 'UNITED FRUIT COMPANY/POSTED/ON THE/HIGH SEAS/Date/ S.S. ZAGAP 7/STEAMSHIP SERVICE' Cover has heavy crease and is little torn, otherwise fine,quite attr. & scarce.	12.50
393		1935 Maritime cover to UK with US value and pmk thrice on front *** 'UNITED FRUIT COMPANY' cachet-'S/S TOLOA' plus *** 'PAQUEBOT-	15
394		'KINGSTON/JAMAICA'D.R. d.s. B/S. Fine. 1936 Cunard White Star Letter Card with Crest on reverse VFU to Canada with GB 1½d pmk *** 'KINGSTON PAQUEBOT/JAMAICA' cds.	32
395		1923/32 Pair of Honduras Stamps and 2 Cuba on piece. All pmk *** 60-80% 'PAQUEBOT/KINGSTON JAMAICA' D.R. d.s. Fine.	7.50
396		1901/04 Columbia Stamps (2) each pmk *** 'KINGSTON' D.R. d.s. Fine.	7.50
397		196? local cover with *** cachet 'M.V. FEDERAL MAPLE/PORT OF SPAIN' eqc. Fine.	4.00
		STREET LETTER BOXES	
398		1897 ½d PSC locally used to Montego Bay & pmk ** 'STREET LETTER BOX/KINGSTON JAMAICA' with code '3M' and clear date, type SLB 2A. Fine.	13.50
399		1900 cover from Kingston to Preston ,Lancs with 1d Key Plate FU & pmk 'STREET LETTER BOX/KINGSTON JAMAICA' type SLB3 *** 100% strike.Cover little soiled and torn at flap but quite attr. B/S.	15.00

Caribbean Philatelic Auctions, 12 April 1989: Brian Thompson collection of Jamaica

Lot	Photo	Description	Est
400		1904 1d PSC H&G 17 FU comm, to Leeds, England & pmk *** 'STREET LETTER BOX/3F/JAMAICA' Foster type SLB4 which just goes over edge of card. Fine & attr.	17.50
401		1904 PPC - 'Washing Scene near Old Harbour' FU to Basingstoke, Hants with ½d Arms type pmk *** 'STREET LETTER BOX/JAMAICA' type SLB4. Fine.	17.50
402		1906 PPC - 'View from Newcastle' FU to UK with 1d Arms used & pmk *** 70% strike 'STREET LETTER BOX KINGSTON/JAMAICA' type SLB4 with code '3K' Fine & attr.	17.50
403		1906 PPC 'Castleton Gardens, Jamaica' FU to London with ½d Arms VFU & LETTER BOX KINGSTON/JAMAICA with code '3E' & clear date. Type SLB4. Fine & attr.	17.50
404		1912 Mourning cover to London with contents. Reverse shows pair ½d Arms pmk ** to *** 'STREET LETTER BOX KINGSTON/JAMAICA' with code 'B'. Clear date. Foster type SLB6. Very fine, most attr. scarce	19.50
405		1916 coloured PPC - 'No.1 The Parade, Montego Bay' VFU to Switzerland with KGV 1d SG58 FU & pmk **** 'STREET LETTER BOX/ MONTEGO BAY' Foster type SLB9. Very fine & attr.	18.50
406		1940 PPC - 'The Old Fort, Montego Bay' FU to Cambridge, England with 1½d def & pmk ** 'STREET LETTER BOX/MONTEGO BAY' Type SLB9. Fine.	14.50
407		STREET LETTER BOX COLLECTION on 3 Album Leaves. 20 stamps or pieces inc. one cover. Strikes mostly *** or ****. Inc. KINGSTON, MONTEGO BAY with 1930 cover to Govt. Railway & PORT ANTONIO. Fine & attr. lot.	28.00
408		1965 cover to USA rated 1/- with *** 'STREET LETTER BOX PORT ANTONIO/JAMAICA' D.R. d.s. type SLB12. Fine & attr.	16.50
		MISCELLANEOUS HANDSTAMPS	
409	PHOTO	1877 Penitentiary PSC ½d H&G 1 VFU locally from Kingston to Alman Town showing ** 'RETURNED LETTER BRANCH' h.s. plus *** 'ADVERTISED' in frame. Foster type UN5. Very fine, attr. & scarce.	55.00
410	PHOTO	1877 New design Penitentiary PSC id VFU from Kingston to Alman Town with ** 'RETURNED LETTER BRANCH' h.s. plus light but ** framed 'ADVERTISED' type UN5 and 'UNCLAIMED' in red type UM3. Very fine, attr. & scarce.	55.00
411		1890 PSC ½d used locally from Kingston to Up Park Camp with *** squared circles of both these offices plus ** 'RETURNED/LETTER BRANCH/Date/JAMAICA' h.s. Generally fine.	22.00
412		1903 PSC ½d used locally from Kingston to Linstead P.O, with **** 'KINGSTON' D.R. d.s. etc. 'Unclaimed' in m/s and *** boxed 'RETURNED/LETTER BRANCH' d.s. Very fine & attr.	24.00
413		1942 small cover from Kings House, Jamaica (with crest on flap) to wife of Officer in United States Engineers in Kingston with ** to *** large oval 'GOVERNOR OF JAMAICA/FREE/ARDE de CAMP' cachet on front. Fine & attr.	9.50
414		1945 local cover from Mandeville to Cross Roads rated 1½d with *** D.R. d.s. of both offices and *** to **** S/L 'UNCLAIMED' in Black on front (45 x 7 mm) B/S. Fine & attr.	18.50
415		19? cover from Mandeville to Christiana with KGV ½d & Christmas Seal pmk *** D.R. d.s. of latter and with *** S/L 'UNCLAIMED' sloping type in black struck twice. Fine. attr. & scarce.	12.50
416		1951 Unclaimed cover from Kingston to Jones Town rated 1d with *** D.R. d.s. of latter and ** S/L 'UNCLAIMED' in black 40 x 7 mm. B/S. Fine.	11.50
417		1955 Reg. cover to UK with strip 3 2d KGVI & ½d VFU & pmk *** 'ASHTON' TRD type 37d plus Reg. Label & *** S/L 'MAILED OUT OF COURSE' Very fine. B/S.	9.50
418		1965 local cover from Mandeville to Duanvale P.O, with *** m/c cancel of former. Shows 'not called for' in m/s and **** framed 'UNCLAIMED' in black. Fine. attr. & scarce.	15.00
419		1968 cover from Malta to Kingston with on front and struck twice *** boxed 'UNCLAIMED' in purple (75 x 20 mm) Fine.	12.50

Caribbean Philatelic Auctions, 12 April 1989: Brian Thompson collection of Jamaica

Lot	Photo	Description	Est
420		1957/59 2 covers to Canada from G.B. or Netherlands (latter posted on ship K.N.S.M. m/s "Aegis" with *** cachet) Both show ** to *** boxed 'MISSENT TO JAMAICA,B.W.I.' type MS5. Fine.	11.00
421		1971 cover 'Par Avion' from Germany to Grand Turk.T & C with various values and cds & on front **** S/L 'MISSENT TO JAMAICA' Very fine & attr.	6.50
		MILITARY MAIL	
		The different Type No's of Military Handstamps are from 'The Military Mail of Jamaica' by A.P.D.Sutcliffe. Copies of this book are available from us at a Special Price of £3.50 each (Normal Price £7.50) Please order on your bid form	
422		1852 small cover from England to Lieut. William Bancroft H.M. 16th Regt. at Kingston, Jamaica giving details of the Bancroft family tree. ** to *** crown circle h.s. on front. Precis of original contents of letter written on cover. Small tear top, otherwise fine.	25.00
423	PHOTO	1941 (27 May) Reg. cens. cover from Kingston to Marine Detach, c/o U.S. Navy Contract Office, Kingston with 4 diff. **** Military h.s. on front - 'VERIFIED USN','COVERED BY/KING/P0 NY/P0...', 'PASSED BY NAVAL CENSOR' etc. Types M-USNC 4.M-USN 6,M-USMU 1. B/S. Very fine & attr.	25.00
424	PHOTO	1941 (21 July) cens cover from Kingston to QM Dept. Marine Detach, at Portland Bight with **** 'KENNETH M.WEST/etc' h.s. type M-USNC 1 (scarce) and **** 'NAVAL AIR STATION' boxed h.s. type M-USMU 1 and 'FREDKSNARE CORP' h.s. on reverse. Very fine, most attr. & very scarce.	32.00
425		1941 (18 Sept) cover to USA with U.S. Stamps pmk **** 'MAR.DET. PORTLAND BIGHT/JAMAICA BR' with 'BRITISH/WEST INDIES' in 2 bars. Type M-USM 18. Very fine & most attr.	10.00
426		1941 (7 Oct) cens. cover from USA to Marine Detach with U.S. Censor Label and on front *** boxed 'VERIFIED USN' and 'PASSED BY/NAVAL CENSOR' without initials types M-USNC 4 & USNC 2(i). Fine & attr.	15.00
427		1941/42 covers (2) from USA to U.S. Marine Detach, at Portland Bight, Jamaica each with **** 'PASSED BY NAVAL CENSOR' with initials type M-USNC 2(ii).Fine & attr.	18.50
428		1942 (13 Jan) cens. cover to Marine Detach. Portland Bight from USA with on front *** 'PASSED BY/NAVAL CENSOR' without initials type M-USNC 2(i). Very fine & most attr.	9.50
429		1942 cens. cover from USA to Portland Bight with on front **** strike 'PASSED BY/NAVAL CENSOR' with initials. Type M-USNC 2(ii). Very fine & attr.	9.50
430		1942 Printed Canadian Legion War Service Front to Canada and rated 1/- with *** 'MILITARY CENSOR/"Y"/FORCE/NO.5' h.s. Type M-CAC 2. Central crease but fine.	14.50
431		1942 (29 June) Printed Canadian Legion War Services cover to Canada rated 6d with **** 'MILITARY CENSOR/"Y"/FORCE NO.8' h.s. Type M-CAC 2. Cover soiled and roughly opened at top, otherwise fine & scarce.	25.00
432		1942 (5 Aug) Canadian Forces Airmail cover to Canada with 6d pair defs with KINGSTON cds and with **** 'MILITARY CENSOR/"Y"/FORCE/ NO.2' Sutcliffe type M-CAC 2 in Black which runs slightly over edge of cover where cut away on opening. Little soiled. otherwise fine & scarce.	16.50
433		1942 Canadian Forces cover to Canada rated 6d with **** 'MILITARY CENSOR/"Y"/FORCE/NO.2' h.s. type M-CAC 2 on front. Fine & attr.	25.00
434		1944 (21 Sept) Canadian Forces Air cover rated 6d pmk 'KINGSTON' with *** Imperial Crown h.s. 'CANADIAN ARMY/316' type M-CAC 4 which is slightly covered by PC90 Label 'OPENED BY/EXAMINER D/8808' Fine & attr.	28.00
435		1941 (17 Nov) U.S.Army cens. cover from Fort Simmonds,Jamaica to USA with 1d Coronation strip 3 pmk **** 'AMERICAN BASE FORCES A.P.0.804' cds and *** boxed 'PASSED BY/US 102/ARMY EXAMINER' with initials. Type M-USAC 4 (Note:- only 5 covers known posted with Jamaican Stamps on F.Day) Very fine & attr.	18.50

Caribbean Philatelic Auctions, 12 April 1989: Brian Thompson collection of Jamaica

Lot	Photo	Description	Est
		P.O.W. & CAMP MAIL	
436		1941 (12 Dec) Printed INTERNMENT CARD with Camp h.s. on front type M-POWC 3 and 'POSTAL CENSOR/JAMAICA/PASSED/(5). Card type POWPS -1. Fine & attr.	25.00
437	PHOTO	1942 cens. cover from GIBRALTAR CAMP 2 to Buenos Aires rated 2/1d with Label 'OPENED BY CENSOR' in Carmine with h.s. 'D' type M-PCL3a and with ** to *** circular 'GIBRALTAR CAMP' plus **** Crown type 'PASSED/39' type M-PC4. Very fine.attr. & scarce.	38.00
438	PHOTO	1942 cens. cover from GIBRALTAR CAMP 2 to New York rated 1/- with *** 'KINGSTON' cds & **** 'GIBRALTAR CAMP' in 2 circles which touches over edge of cover plus Censor Label. Fine. attr. & scarce.	36.00
439	PHOTO	1942 (10 Aug) cover from P.O.W. Camp to Buffalo, USA with on front **** strikes 'POSTAGE PAID', 'PRISONER OF WAR POST'. Crown Censor, 'PASSED D39' with also 'LETTER IN ...' (German) and Camp h.s. on reverse. Type M-P0W7,P0W8,P0WC5,P0WC3. Very fine. attr. and scarce.	40.00
440	PHOTO	1943 (6 July) Printed INTERNMENT CAMP PSC to USA with POW Unit h.s. type M-POWC 3 and Crown type 'PASSED/D/5' Very fine & attr.	25.00
		CENSORED MAIL	
441	PHOTO	1917 (10 May) cens. cover from Montego Bay to USA with ½d WAR STAMP in Blk.4 VFU & pmk D.R. d.s. with scarce label 'OPENED BY AN OFFICER/OF THE POST OFFICE BY/EXPRESS WARRANT OF/THE GOVERNOR' Fine & scarce.	40.00
442		1940 (30 March) cens. comm, airmail cover to London with 4d & 6d defs plus JAMAICA/WAR FUND-RED CROSS Label with 'KINGSTON' cds and Label 'OPENED BY/CENSOR' type M-PCL 1A. Very fine & most attr.	16.50
443		1941 cover from Newcastle to London with 2 x 1d (one stamp missing and signed in space)plus alongside 'JAMAICA/WAR FUND' Red Cross stamp type M-PTL 2. Not pmkd. Fine & attr.	14.50
444		1941 (3 Nov) cens. air. cover to Birmingham with 1d & 1/- def pairs FU & pmk 'MYRTLE BANK' D.R. d.s. plus 'OPENED BY/CENSOR' Label type M-PCL 1A and *** '10' h.s. type M-PC3. Very fine.	8.50
445		1943 (12 Sept) comm, cover to USA with KINGSTON Meter Mark with US Censor Tape and on front *** Crown type 'PASSED/D/2' type M-PC4(late date of use) Fine & attr.	8.50
		POSTAL STATIONERY CARDS	
446		1877 Penitentiary PSC ½d H&G 1. VFM.	9.50
447		1877 Penitentiary PSC ½d H&G 1. VFU to Bath P.O. Scarce.	16.50
448		Ditto but some toning.	11.50
449		1877 Penitentiary PSC 3d H&G 3. VFM.	9.50
450		Ditto but FM.	8.50
451		Ditto but little toned.	7.00
452		1877 Prov. Floriate PSC 3d H&G 6a. FM.	9.50
453		1877 Prov. Floriate PSC 3d H&G 6j. VFM.	9.50
454		1877 PSC's - ½d,1d & 3d H&G 7,8 & 9. VFM.	7.00
455		1877 PSC's all ½d (6) all FU or VFU. Locally (inc. 1 to Jamaica Govt Railway & U.K.) Pmk mostly *** strikes of:- Squared Circle BATH & KINGSTON,single circles WATSONS HILL,TRINITYVILLE,SAINT DAVID & MORANT BAY plus D.Rings DRY HARBOUR,CONSTANT SPRING & KINGSTON. Fine lot.	36.00
456		1879 PSC's (2) UPU 1½d on 3d Surcharge types A & B. H&G 10/10a. VFM.	6.50
457		1883 PSC & PSRC 1½d or 1½d + 1½d H&G 11a/14. VFM.	5.00
458		1890 PSC's - ½d on 1d Blue & PSRC both halves. H&G 15,16 & 16b. VFM	7.50
459		1891 PSC - 1d Blue on Buff H&G 17. FM and also VFU to Austria with ½d value added & pmk KINGSTON squared circle. Fine.	8.50
460		1891 PSC's (2) 1d Blue on Buff H&G 17. Both VFU to UK and pmk *** 'SPANISH TOWN' D.R. d.s. Very fine & attr.	13.50
461		1891 PSC - 1d Blue on Buff H&G 17. 2 cards FU to UK or British Guiana and pmk 'KINGSTON' D.R. d.s. One has crease otherwise fine.	12.00
462		1903 PSC KEVII ½d Green on Cream H&G 19 ovpt SPECIMEN. FM.	12.50

Caribbean Philatelic Auctions, 12 April 1989: Brian Thompson collection of Jamaica

Lot	Photo	Description	Est
463		1903 PSC KEVII 1d ovpt SPECIMEN. FM.	12.50
464		1903 PSC KEVII 1d VFU to USA and pmk ***. 'PORT ANTONIO' D.R. d.s. Very fine & attr.	6.50
465		1903 PSC KEVII 1d(2) FU to Paris or USA and pmk ** 'CLAREMONT' or 'PORT MARIA' D.R. d.s. Very fine & attr.	12.50
466		1912 PSC KGV ½d Green H&G 25. VFM.	3.50
467		1938 PSC's ½d Green & 1½d Brown H&G 29/34. VFM.	7.00
468		1953 PSRE 4d + 2d size H H&G 10a VFU from SAMUEL PROSPECT to Leicester with Reg. Label of this office. Fine.	9.50
469		Similar cover from Reading to UK with Reg. Label of this office. Fine.	9.50
470		1966 Aerogrammes - 6d value 4 each with diff. colour views. VFM.	9.50
		TEMPORARY RUBBER DATESTAMPS	
471		1889 1d SG27 with *** 60% strike 'ALLIGATOR POND' clearly dated 4'92. Type TD4 (only used in March/April 1892) Very fine, v.scarce.	18.50
472	PHOTO	1921 ½d & 3d Pictorials on large piece pmk complete **** 'BECKFORD KRAAL' type TD 23(c) with clear date. Very fine & very scarce.	36.00
473	PHOTO	1912 1½d SG59 on small piece with complete *** 'GRANGE LANE' boxed TRD clearly dated 26/9/1918. Type TD 18 (former Railway Station)	36.00
474		1919 1½d Pictorial with complete *** boxed 'LUCKY HILL' TRD type TD 21. Very fine & scarce.	22.00
475		1919 1½d Pictorial on piece with complete *** strike on 'MOUNT JAMES' TRD type TD 21. Very fine & very scarce.	30.00
476	PHOTO	1919 ½d & 1d Pictorial on piece with complete **** boxed 'MUNRO COLLEGE' TRD type TD 22. Very fine & scarce.	28.00
477		1929 1d on piece large piece with 70% **** 'RICHMOND PARK' boxed TRD type TD 25 with clear date. Fine & scarce.	22.00
478	PHOTO	1889 1d SG27 with **** 'TITCHFIELD' TRD type TD 11. Very fine & scarce.	36.00
479		1938 Reg. cover to London with 1921 3d Pictorial & ½d FU with **** large boxed 'JAMAICA PHILATELIC SOCIETY/AT NATHANS STORE' etc. plus Reg. Label. B/S. Slight soiling but generally fine.	9.50
480		1938 local cover with 'JAMAICA PHILATELIC SOCIETY/NATHANS STORE' large boxed TRD etc. Strike ****. Fine & attr.	9.50
481		Similar cover.	9.50
		The following lots all show TRD's and are on full cover and in fine condition.	
482		1939/40 TRD's type 32. 2 covers (one comm, but creased) each with **** boxed 'ALLMAN TOWN' TRD dated 20/7/39 or 6/4/40. Some soiling or light staining but scarce.	11.50
483		1945 Reg. cover with *** 'DISCOVERY BAY' type 41d plus Reg. Label. Fine.	9.50
484		1945/50 TRD's (4) type 37 of:- ESSEX HALL, IRISH TOWN, LIME TREE GARDENS & MOUNT INDUSTRY. *** strikes. Fine.	25.00
485		1945 (3 Feb) TRD type 37b on comm, cover to Kingston with ** inverted strike of 'PORTLAND COTTAGE' Scarce comm. use. Fine.	9.50
486		1946 (28 March) TRD (First Day of Operation) with **** 'HAINING' TRD type 37. Very fine & scarce.	11.50
487		1946/47 TRD's of:- CARMEL & KINGS VALE. *** strikes.	14.00
488		1946/50 TRD's (3) type 37 of:- TREASURE BEACH, PALISADOES & PISGAH. *** strikes.	18.50
489		1946/51 TRD's type 43 of:- BROADLEAF, MADRAS, MORGANS PASS, MAIN RIDGE & WHITHORN. Strikes mostly ****. Fine lot, one soiled.	35.00
490		1947 TRD type 39 - 'NINE TURNS' **** strike dated 12 days after opening. Very fine & attr.	9.50
491		1947 Reg. local cover to Clerk of Courts, Chapeltown with 1½d & 3d pmk *** 'NINE TURNS' type 39 plus Prov. Reg. Label. Little soiled but attr. & very scarce as comm, cover.	14.50
492		1949/50 TRD's (4) type 37 of:- ABOUKIR, ASHLEY, BAILEY'S VALE & COLEGATE. *** strikes.	28.00
493		1949/50 TRD's - CALDWELL & CARISBROOKE type 41 & 37da. Strikes ** to ***. Fine.	11.50
494		1950 TRD - 'PALISADOES' *** strike type 37 on PSC KGV 1d Red on Grey (scarce) Very fine & attr.	11.50

Caribbean Philatelic Auctions, 12 April 1989: Brian Thompson collection of Jamaica

Lot	Photo	Description	Est
495		1952 cover to UK with TRD type 45a struck twice 'LOOKOUT' *** strikes. Fine.	8.50
496		1952/66 TRD's for SPECIAL EVENTS - Scout Jamboree/BRIGGS PARK, POST "300" OFFICE (2) & B.E. & C.G. NATIONAL STADIUM. Strikes mostly *** or ****.	7.50
497		1954/56 TRD's - KINLOSS, MT.SALUS,PAROTTEE & TYDIXON **** strikes. Fine & attr.	22.00
498		1954/64 TRD's - LEMON HALL & MONGRAVE ** strikes. One on 1d PSC.	5.00
499		1954/55 TRD's - type 37d - 'CARRICK FOYLE' & 'CRAIGHEAD' strikes.	7.50
500		1956/66 TRD's - LEINSTER, LONG LOOK & PENNANTS *** strikes.	7.50
501		1960 2 Reg. comm, covers to London with TRD's - NEWTON & FRANKLIN TOWN. Strikes ***. Plus Reg. Labels of same offices. One provisional. Fine.	9.50
502		1961/62 TRD's - BUNKA TREE. HEYWOOD HALL. LEWISBURG & MERCURY HOUSE. *** or **** strikes.	12.50
503		1961/63 TRD's - DARLISTON, LEWISBURGH, JOE HUT & CLIFFORDS. Mostly *** strikes.	14.50
504		1963 TRD's - CHATSWORTH, GLASTONBURY & HAYFIELD. *** strikes.	9.50
505		1964/67 TRD's - MOUNT PROVIDENCE, ROSETOWN & THORNTON. Strikes * or **. 2 soiled or creased.	5.00
506		1965/66 TRD's -HAYFIELD & SUMMERFIELD. Strikes light but **.	5.00
507		1968/72 TRD's (6) - OLD HARBOUR BAY, BOWDEN,BONNETT P.A.,BOMBAY, PRINCES FIELD & MYRTLE BANK P.A. Strikes * or **.	5.00
508		KGVI COLLECTION OF TRD'S. All on pieces with stamps. Mostly complete and *** or **** strikes. Inc. BIGWOOD, BERRY HILL, BLAIRS HILL,BIRDS HILL,BURNT SAVANNAH,BOMBAY,BRANDON HILL,BARLEY,BRAETON, BRIXTON HILL,CLYDESDALE,COPSE etc. plus 1927 JAMAICA PHILATELIC EXHIBITION. 15 pieces. Very fine lot.	20.00
509		KGVI COLLECTION etc. as previous lot with mostly complete and **** STRIKES. Inc. DANVERS PEN, DELVELAND,EPSON,FAITHS PEN,FLINT RIVER, FLOWER HILL,FREEMANS HILL,FR0ME(2 types),GROVETOWN,HADDINGTON, HAINING,IRISH TOWN & JOHNSON MOUNTAIN. 22 pieces. Very fine lot.	28.00
510		KGVI COLLECTION OF TRD'S all on pieces with stamps mostly complete and *** or **** strikes. Inc. DUFF HOUSE, DRESSIKE,DUMFRIES,LANCES BAY,LANCASTER,LINTON PARK,LYDFORD(2),MT.AIRY,MOUNT PLEASANT,MOUNT MORELAND, NEWTON. RITCHIES, PALISADOES, ROWLANDSFIELD, ROCK SPRING, TOWER ISLE etc. (20 pieces) Very fine lot.	28.00
511		KGVI COLLECTION OF TRDS all on pieces with stamps in 2 stockcards inc. 6 very large pieces (some Reg.) Mostly complete *** or **** strikes. Inc. JACKS RIVER, MUIR HOUSE, MULGRAVE, MORGANS PASS,MONA, NEW GREEN, PERTH TOWN, PADMORE, QUICKSTEP, PLOWDEN, PLEASANT VALLEY, QUICKSTEP, PRICKLEY POLE,PORTERS MOUNT (F.Day).PISGAH,PORTLAND, COTTAGE, RITCHIES, REFUGE, RIO GRANDE, SUCCESS, SHIRLEY CASTLE, JOHNSON MOUNTAIN etc. 25 pieces. Very fine lot.	32.00
512		KGVI COLLECTION as previous lot with mostly complete and **** strikes. Inc. SALT SPRING, SANDY RIVER, SAMUEL PROSPECT, SOMERSET, SLIPE, SILVER SPRING, STRATHBOGIE, ST.PAULS, TRANQUILITY, TOP HILL, VAUGHANSFIELD. WATCHWELL, WHITEHALL, WINDSOR FOREST etc. 17 pieces. Very fine lot.	22.00
513		QEII COLLECTION OF TRD'S all on pieces with stamps and mostly with complete *** strikes. Inc. BOURBON, BURBON, BOWEN, FRASER, FULLERTON PARK, FRANKLIN TOWN, HAMPSHIRE, KING WESTON, LUCKEY VALLEY, MOORES, MOUNT EDGECOMBE, MITCHILLS HILL, NEW WORKS, NUTFIELD, RED VALLEY, ROSES VALLEY, REFUGE, RICHARDS PEN, TREADWAYS, TOP MOUNTAIN, BARNEYSIDE, JERICHO CORLEYS ROAD, COTTERWOOD etc. 38 pieces. Very fine lot.	

Caribbean Philatelic Auctions, 12 April 1989: Brian Thompson collection of Jamaica

Lot	Photo	Description	Est
514		QEII COLLECTION as previous lot with mostly complete and *** or **** strikes. Inc. ALBION, ARLINGTON, BROADGATE, DEVON PEN, CENTRAL VILLAGE, FARM, GALINA, GLANVILLE(KGVI 1949), GREY GROUND, GREEN PARK, IRWIN, JACKSON TAYLOR etc. 48 pieces. Very fine lot.	36.00
515		QEII COLLECTION as previous lot with mostly complete and *** or **** strikes. Inc. JUBILEE TOWN, KETTO, KENTUCKY, KIRKVINE, MALCOLM SQUARE, MAVERLAY, MENDEZ, NORWICH, NIAGARA, OLD HARBOUR BAY, YORK PEN, PALMERS CROSS, PRIORY, ROBINS HALL, ROBINS BAY, RETRIEVE, ST.GREGORY, SAWYERS, SANGUINETTI, SPRING BANK etc. 52 pieces inc.some large. Very fine lot.	38.00
516		QEII COLLECTION as previous lot with mostly complete or *** strikes. Inc. SCOTTS RUN, STRAWBERRY, T.P.0.2, T.P.0.3, T.P.0.4, WAREIKA, WESTPEALIA, WATER LANE, WINDSOR, FOREST, 3rd PAN-AM-WHEEL CHAIR GAMES etc. 17 pieces. Fine lot.	10.00
517		1946/70 COLLECTION OF PIECES or STAMPS with TRD'S inc. many complete strikes. Some ***.Inc. LOOKOUT, CONTENT GAP, LUCKY VALLEY, HIGHLAND HEAD, COUSINS COVE.BUNKA TREE, CLOVER HILL, FRANKLIN TOWN, WATERLOO etc. 18 pieces. Fine lot.	10.00
518		1965/67 28 pieces with mostly proofs strikes (no stamps). All are *** or ****. Mostly smaller offices. Some larger pieces. Fine lot.	7.00
		REGISTERED MAIL	
519	PHOTO	1927 Reg. cover to Halfway Tree with 3d SG96 FU and pmk **** boxed 'REGISTERED' h.s. (very rare strike, only 2 known). Also shows feint boxed 'RETURNED LETTER BRANCH/KINGSTON, JAMAICA' with 'UNCLAIMED' in m/S. B/S. Fine & attr.	48.00
520		1954/64 Reg. covers (40) with labels and cds of many small offices. Good lot with some scarce. E	24.00
521		1941-55 COLLECTION on Album Leaves (8) with ditto covers showing various Reg. Labels and cds. Inc. 1941 MARCH TOWN etc. Useful lot.	10.00