



British West Indies  
and South Atlantic Islands  
Stamps and Postal History

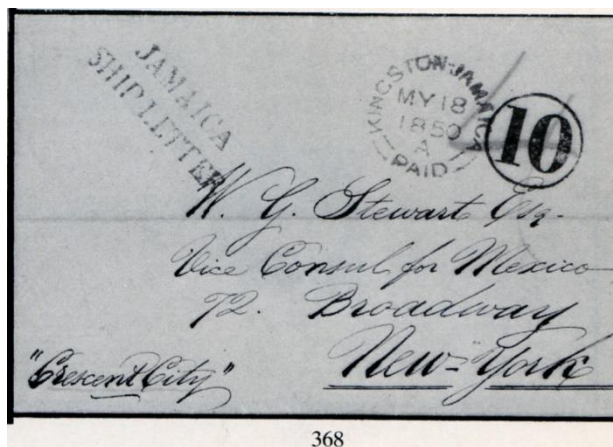
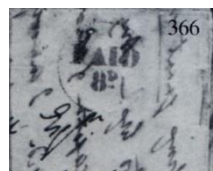
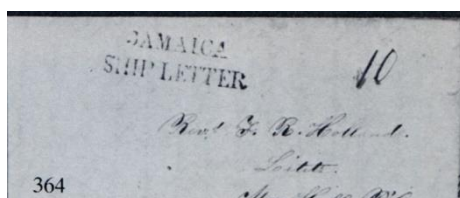
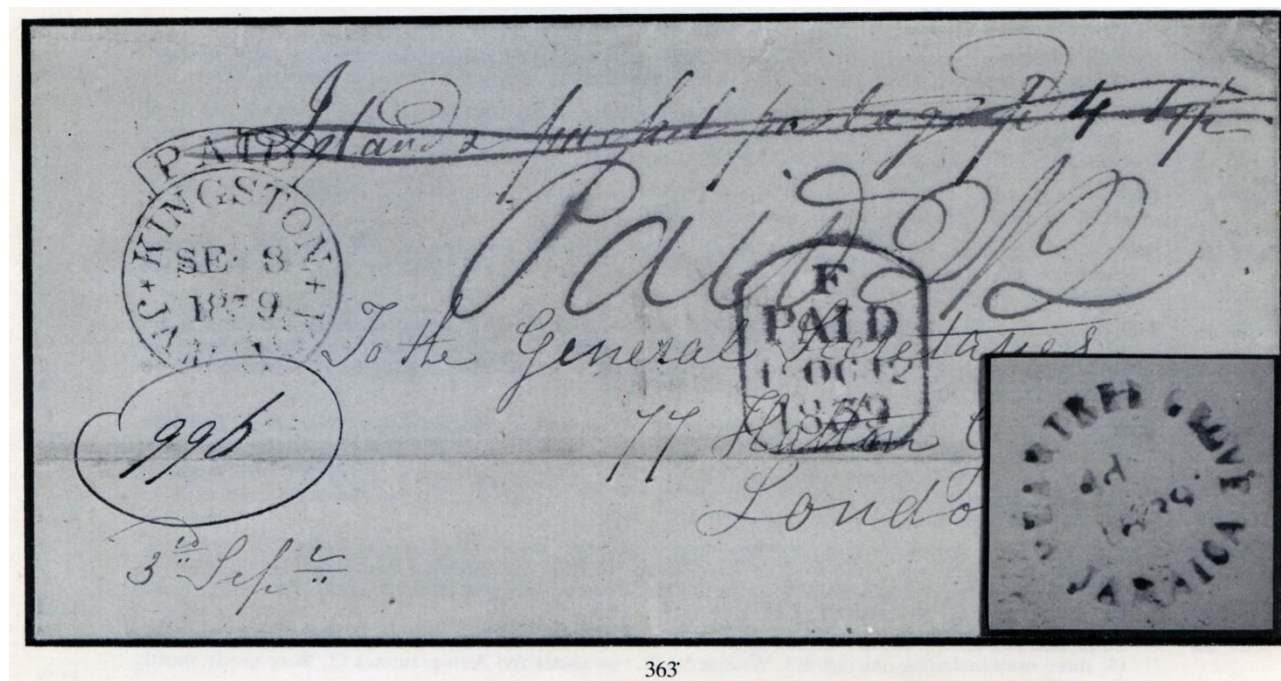
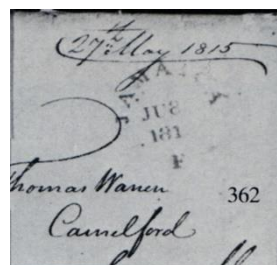
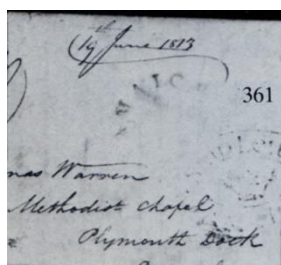
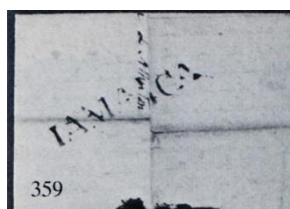
London

Tuesday, 24 October 1989  
at 10.30 a.m. and 2.00 p.m.



**CHRISTIE'S**  
ROBSON LOWE







372



374



375



376



377



379



385



378



384



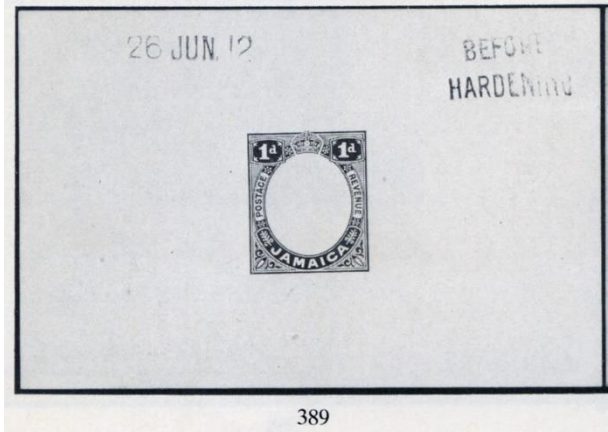
386



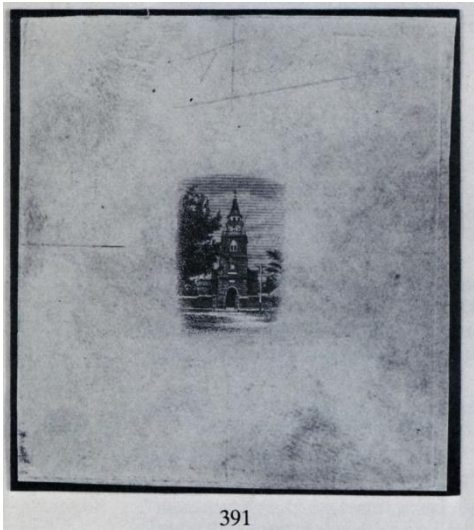
387



388

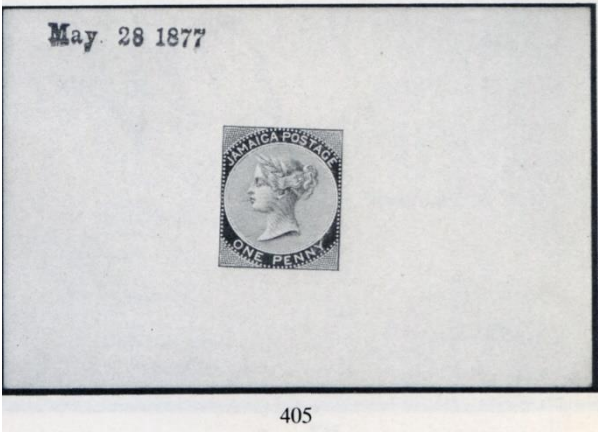


389

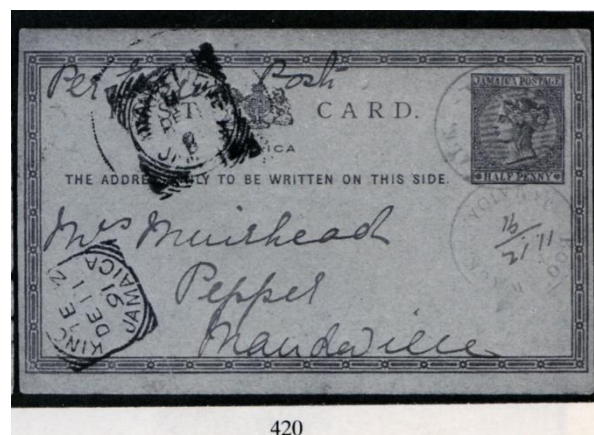
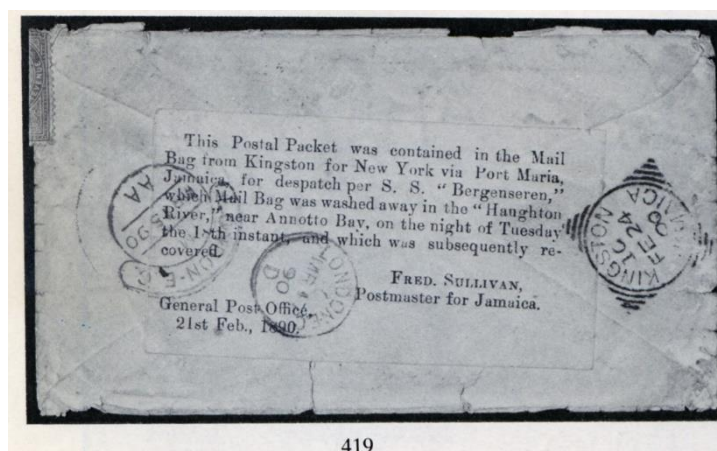
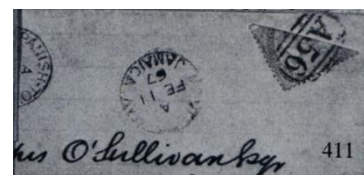
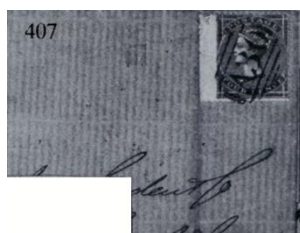
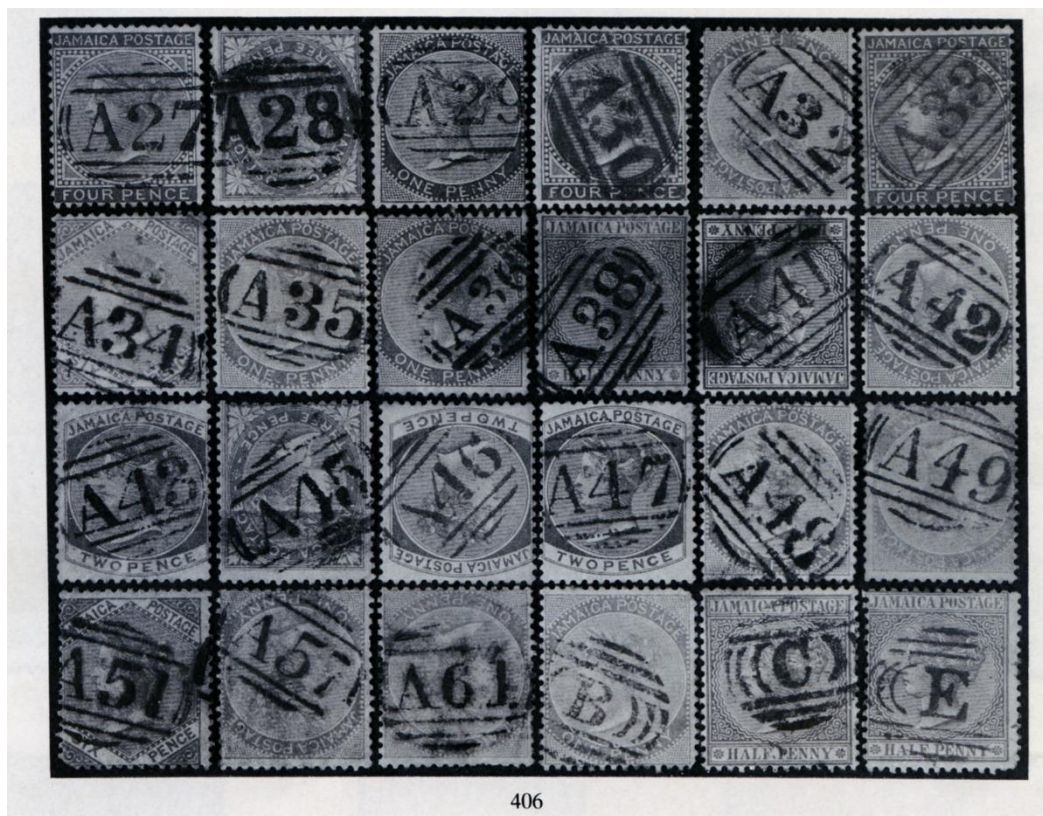


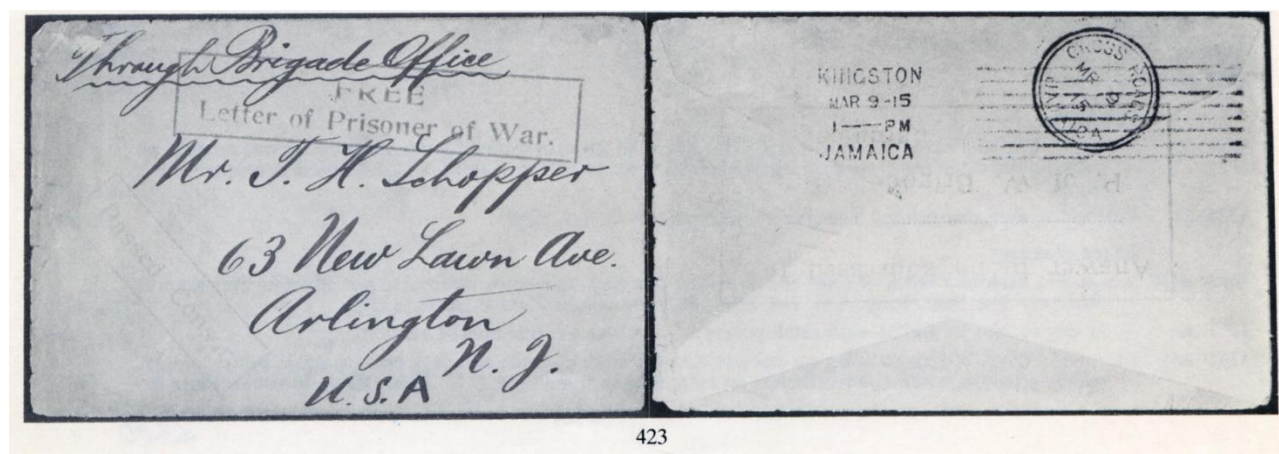
391











423

Lot	Photo	Description	Est	Real
		Jamaica Early Letters and Handstamps		
357		1778 E.L. to London, rated "IN" and marked "Inland Post Pd 7d½" in red, showing on reverse light "LACONIA" (Type T2) and "IAMAICA" (J1) h.s., both crossed by light filing crease. Ex Erickson	£45	71
358		1789 E.L. to Trelawny showing, on reverse, "SPANISH/TOWN" (Type T1) * to **, 1801 E.L. to Edinburgh, variously rated and showing, on reverse, light "FALMOUTH" (T2) **, 1821 E.L. to Rodney Hall P.O. showing-light "ALEXANDRIA" (T4a) * to **, 1835 E.L. to England showing, on reverse, "DRY HARBOUR/JA" (T3) * to *** in black across join with Kingston c.d.s. (K4) alongside, 1837 circular (faults) to Spanish Town showing, on reverse, over-inked "LITTLE RIVER" (T4b) ** across join, 1837 E.L. to London showing, on reverse, "FALMOUTH" (T4a) * to **, and 1838 E.L. to Edinburgh showing "MONTEGO BAY" (T4b) * to *** and green boxed "½"	£150	121
359	Photo	1792 (7th Feb.) E.L. to Scotland, rated "1/-" (deleted) and "1/7", marked "paid 1/3" and showing, on reverse, legible "MARTHA/BRAE" (Type T1) overstruck by arrival d.s. and with "IAMAICA" (J1) ** across join. Rare.	£80	60
360		1795-1857 E.L. (10, one disinfected) and E. (9) showing a variety of markings including "IAMAICA" (J2), "FALMOUTH" (T2), "FALMOUTH/JA" (T3), "MONTEGO BAY/JA" (T3), Jamaica fleuron (F5), "KINGSTON/JAMAICA" c.d.s. (K2-K6), "BATH/JAMAICA" c.d.s. (P2a) and similar for Falmouth; condition generally fine with mainly ** strikes	£350	
361	Photo	1813 (June) E.L. to England, rated "7/70", showing light "Ship Letter/Crown/JAMAICA" * and small part "JAMAICA/F" d.s. in green.	£80	99
362	Photo	1815 (27th May) E.L., headed "Victualling Office", to Cornwall, rated "1/10" and showing "JAMAICA/F" d.s. * to *** in green. The E.L. with faults, particularly along folds. Scarce.	£175	187
363	Photo	1839 E. to London, marked "paid 2/2" in red, showing crested "PAID/KINGSTON/JAMAICA" c.d.s. (PD4) ** to *** clear of filing crease and, on reverse, slightly over-inked "PEAR TREE GROVE/JAMAICA" c.d.s. (P2b — rare).	£75	242
364	Photo	1846 (7th May) E.L. from Bethlehem near Philadelphia to May Hill P.O., marked on reverse "forwarded by Jordan and Brother" (Philadelphia), rated "10", showing fine "JAMAICA/SHIP LETTER" and "KINGSTON/ * JAMAICA" double-arc d.s. (on reverse) for 1st June.	£100	154
365		1849 (7th Feb.) mourningcover (with contents) to London, showing handstruck "1s/-" (TP2) ** to *** and, on reverse, Kingston c.d.s. (K7a)	£45	35
366	Photo	1849 (12th Feb.) E.L. from Montego Bay to Spanish Town, showing scarce circular-framed "paid/8d" in red (PD14) with, on reverse, despatch and arrival c.d.s. The E.L. with worm holes and other small faults. Ex Cameron.	£100	110
367	Photo	1849 (18th Feb.) E.L. from U.S. A. to Mandeville, rated "8", showing "SALEM/N.C." c.d.s. in red, overstruck by "JAMAICA/SHIP LETTER", unframed "PAID" in red, overstruck by large handstruck "4" (TP1) and deleted, and, on reverse, Kingston transit and Mandeville arrival c.d.s.	£180	132



Christie's Robson Lowe 24 October 1989

368	Photo	1850 (18th May) E.L. to New York, rated "4" in red, showing "JAMAICA/SHIP LETTER" and "KINGSTON-JAMAICA/PAID" c.d.s. in red (PD6) with circular-framed "10" alongside.	£150	154
369		1863 (19th Dec.) unfranked cover (some discoloration) from Kingston to St. Ann's Bay, redirected to Montego Bay, rated "4" (deleted) and "7", and showing respective c.d.s. on reverse	£35	
		1860-63 Watermark Pinbeapple		
370		1d., 2d. (rubbed), 4d. (slightly rubbed) and 6d. imperforate, and 1/- deep yellow-brown perforated, each overprinted "specimen" (Samuel Type D2), all with trace or part original gum	£45	35
371		1d. pale blue, a block of four, fresh with much original gum, some perf. faults particularly at lower left, otherwise fine. Scarce. S.G. 1	£100	
372	Photo	2d. rose, an imperforate imprimatur on gummed watermarked paper, fine.	£125	
373		2d. rose, a block of four with original gum, a few perfs. trimmed at foot and the upper pair with horizontal crease. Scarce. S.G. 2	£125	
374	Photo	2d. deep rose, a fresh block of four with much original gum, a few shortish perfs. at right, otherwise fine. Scarce. S.G. 2a.	£200	165
375	Photo	3d. green without gum, overprinted "specimen" (Type J3), straight-edge at top. Scarce.	£50	
376	Photo	6d. dull lilac, an imperforate imprimatur on gummed watermarked paper, fine.	£125	99
377	Photo	1/- dull brown, an imperforate imprimatur on gummed watermarked paper, fine.	£125	99
378	Photo	— showing variety "\$" for "S" in "shilling", cancelled "A56", two small tears and a few short perfs., nevertheless of good appearance and a collectable example. Rare. S.G. 6 b/c, £700.	£100	77
379	Photo	1/- yellow-brown, variety "\$" for "S" in "shilling", cancelled "A01" and by c.d.s.; colour a trifle faded and a few perfs. trimmed at foot. Rare. Cat. £700.	£150	
		1870-83 Watermark Crown CC		
380		½d., 1d., 2d., 4d., 6d. and 1/- imperforate colour proof pairs in close to issued colours, on unwatermarked glazed paper, each overprinted "cancelled", some minor rubbing otherwise fine. Attractive	£150	
381		½d. and 1/-, 1883-87 CA ½d. (2), 1d. red (2), 2d. (block of six — toned), 3d. (2), 4d., 6d. (3), 1/- (2), 2/- and 5/- (gum-toned), and 1905-11 MCA 3d. purple on yellow, 4d. black on yellow, 4d. red on yellow (3), 6d., 1/- brown and 2/- purple on blue (a trifle faded), each in a mint block of four, mostly fine. Cat. £1,298. (102)	£250	198
382		2d. deep rose, a marginal block of four with much original gum, a few short perfs. and a little staining, virtually confined to margin, otherwise fine. S.G. 9a	£60	79
383		4d. marginal block of four and 1/- marginal strip of three, both imperforate colour proofs in close to issued colours, on unwatermarked glazed paper, each overprinted "cancelled", fine	£80	
384	Photo	1/- dull brown, variety "\$" for "S" in "SHILLING", lightly cancelled, a few small faults though a presentable example. Rare. S.G. 13a, £700.	£120	
385	Photo	2/- Venetian red, an imperforate imprimatur on gummed watermarked paper, fine apart from hinge remnants.	£100	77
386	Photo	1904CA5d., variety "SER.ET" for "SERVIET", tiny split at top, otherwise fine used. Rare. S.G. 36a, £700.	£250	
387	Photo	1910 MCA 1/- black on green, a marginal vertical strip of three with current number, one showing "\$" for "S" in "SHILLING" (crossed by crease), mounted mint. Rare. S.G. 54a £900.	£350	
388		— a single .showing same variety as last, cancelled by c.d.s.; a little stained and discoloured, nevertheless a clear presentable example- Rare. Ex Cameron. Cat. £1,000. Photo	£400	
389	Photo	1912 1d. die proof of the frame, in black on glazed card (92 x 60 mm.), marked "BEFORE HARDENING" and dated "26 JUN. 12".	£100	165
390		1917 (Mar.) War Stamp 3d., variety overprint inverted, some foxing mainly confined to reverse, mint. S.G. 75c, £560	£125	

Christie's Robson Lowe 24 October 1989

391	Photo	1919-21 4d. die proof of the vignette in brown, on wove paper (56x62 mm.), marked "Touched" at top; the surrounds and reverse discoloured with brown printing? ink.	£150	176
392		— 10/-, a complete sheet (5x6), some minor creases, otherwise fine unmounted mint. S.G. 89, £2,250	£800	605
393	Photo	1921 6d. Abolition of Slavery, on MCA paper, overprinted "specimen", fresh and fine mint. Rare. Cat. £550.	£200	165
394	Photo	— ditto, a similar lot, somewhat toned, otherwise fine.	£150	121
395		— ditto, on Script paper, overprinted "specimen", fresh and fine mint. Rare. Cat. £550. Photo	£200	275
396	Photo	— ditto, a similar lot as last.	£200	165
397		1921-29 Script ½d. to 10/- less 1½d., each overprinted "specimen", the 4d. with rounded corner, otherwise fine	£50	
398	Photo	— 10/- myrtle-green, showing traces of doubling at foot, fine mint. Rare. S.G. 103.	£150	
399	Photo	1922 c. imperforate printer's samples on thick paper comprising 2d., 2½d., 4d. (overprinted "specimen" — Type DS2), 1/-, 21- and 3/-, fine.	£250	198
400	Photo	— 6d. (Abolition of Slavery) overprinted "specimen", fine. Rare.	£500	440
401	Photo	1932 2½d., A USED VERTICAL PAIR, VARIETY IMPERF. BETWEEN; the upper stamp with two small tears at right and both very creased. Very rare, only two used pairs believed to exist. S.G. 112a, £2,500.	£1,250	1,980
402	Photo	OFFICIAL STAMPS: 1890 "OFFICIAL" 15-16 mm. long, ½d., a fine marginal mint block [3-4, 9-10], variety overprint double. Rare. Ex Surtees. S.G. 02a, £1,800.	£600	880
403		POSTAL FISCALS: 1868 CC 1d. rose, marginal blocks of nine and four, both with much original gum, the larger block with some short perfs., lightly toned and a few fox-spots, otherwise fine. S.G. F2, £650	£175	
404		POSTAL STATIONERY CARDS: 1877 first local issue ½d. (addressed but uncanceled) and 3d.; second local issue ½d. (3, one used showing framed "ADVERTISED" h.s.), 1d. and 3d.; mainly fine. (7)	£50	49
405	Photo	— 1877 De La Rue 1d. die proof in black on glazed card (92 x 60 mm.), dated "MAY 28 1877".	£120	187
		Covers and Cancellations		
406	Photo	A collection of obliterations on values to 1/-, comprising "A27" (15), "A28" (17), "A29" (10), "A30" (13), "A31" (8), "A32" (27), "A33" (19), "A34" (21), "A35" (23), "A36" (9), "A37" (9), "A38" (25), "A39" (9), "A40" (12), "A41" (12), "A42" (16), "A43" (24), "A44" (10), "A45" (10), "A46" (9), "A47" (19), "A48" (14), "A49" (20), "A50" (16), "A51" (23), "A52" (14), "A53" (16), "A54" (10), "A55" (13), "A56" (26), "A57" (20), "A58" (7), "A59" (17), "A60" (15), "A61" (4), "A" (2), "B" (13), "C" (9), "E" (10) and two others; condition very mixed, strikes mainly * to ** with some *** or superb. A good basis for expansion and well worth examination. Photo for a selection. (568)	£1,500	1,980
407	Photo	1859 (10th May) E. to Savanna-La-Mar, bearing G.B. 4d. with wing-margin (just touched by filing crease) clearly cancelled "A30" and showing, on reverse, legible "BLACK RIVER/JAMAICA" c.d.s.	£125	104
408		1861 (June) E. bearing 1860 6d., 1863 (Apr.) front bearing 1860 4d. strip of three, 1878 (Feb.) cover bearing 1870 2d. (3), 1860 (Sept.), 1881 (Apr.) and 1882 (Sept.) cover bearing 1872 4d.; all except the last addressed to England and each cancelled by "A01" obliterator; some faults	£50	132
409	Photo	1864 (23rd Feb.) 2 to England, bearing 1860 1/- purple-brown (defective) clearly cancelled "A48", showing "LILLIPUT/JAMAICA" c.d.s., Kingston transit and red London Paid c.d.s. Neat and attractive.	£75	110
410		1864 (8th Mar.) E. to Edinburgh, bearing 1863 1/- purple-brown tied by legible "A76", showing "SPANISH-TOWN/JAMAICA" c.d.s. with Kingston and London transit c.d.s.	£40	77
411	Photo	1867 (11th Feb.) large part blue wrapper (206 x 88 mm., folded) to Spanish Town, marked "Book post paid", bearing 1863 1d. pale blue bisected diagonally, tied by superb "A56" and showing poor "MONTEGO BAY/JAMAICA" c.d.s. R.P.S. Certificate (1932).	£80	143



Christie's Robson Lowe 24 October 1989

412		1874 (Aug.) and 1875 (Nov.) covers (with letters) both from the same correspondence to U.S.A., bearing 1872-73 1d. and 4d. (tear at foot) and 1870-73 1d. and 2d. pair respectively, each cancelled "A01" and showing New York transit d.s. An attractive pair, the former with tear at top	£70	88
413		1874 (8th Nov.) front and part back to Liverpool, bearing 1873 1/- (lightly stained perfs.) clearly cancelled "E30" with, on reverse, part Lacovia c.d.s., and 1893 (24th June) mourning cover to London, bearing 1891 2½d. centrally cancelled "A64" with, on reverse, clear "LACOVIA/JAMAICA" c.d.s.	£50	88
414		1877 front and 1880-84 2 (4, faults) to Kingston (4) or Montego Bay, each bearing 1870 2d. tied by "A56", "A66", "A76", "A83" and "G15" obliterations and showing c.d.s. of Montego Bay, Port Maria, Spanish Town, Trinityville and Blue Mountain Valley respectively	£85	143
415		1880 E. (2, no side flaps) from the same correspondence to Halifax, Nova Scotia, bearing 1870-83 1d. (crossed by filing crease), 2d. and 4d. pair, and 2d. pair respectively, each cancelled "A01" and showing New York transit d.s.	£80	66
416	Photo	1881 (31st Aug.) cover (some faults, mainly confined to reverse) from Mandeville to New York, bearing 1873 1d. strip of four, each clearly cancelled "A52" and showing, on reverse, Kingston transit c.d.s.	£50	82
417		1885 cover to St. John, New Brunswick, bearing 1884 2d. pair and 1888 cover to London bearing 1885 1d. pairs (2), both cancelled by Kingston squared-circle d.s.; 1898 3 to U.S.A. bearing 1891 2½ d. tied by Bowden double-ring c.d.s.; 1910 3 registered from Myrtle Bank to Hamburg bearing nine different values to 1/-; 1910 3 from Canada to Kingston bearing 2c. (3) and 5c.; some faults	£100	104
418	Photo	1889 (26th Mar.) 3 from Santa Cruz to Edinburgh, bearing 1885 1d. strip of four (perf. faults at top) each cancelled "A43" and showing, on reverse, despatch and various transit c.d.s.	£50	82
419	Photo	1890 (18th Feb.) .cover (damaged) from Kingston to London, bearing 1883 4d. and 1889 1d. strip of four, showing small boxed "JAMAICA PAID" d.s. in red and, on reverse, bearing label inscribed <i>"This Postal Packet was contained in the Mail / Bag from Kingston for New York via Port Maria, / Jamaica, for despatch per S.S. "Bergenseren", / which Mail Bag was washed away in the "Haughton / River", near Annotto Bay, on night of Tuesday / the 18th instant, and which was subsequently re-covered".</i> Rare.	£150	264
420	Photo	1891 (11th Nov.) ½d. stationery card (small tear at foot) to Mandeville, cancelled by "BOG WALK/JAMAICA" temporary rubber h.s. with another strike below showing manuscript date inserted. Very rare, only two covers recorded.	£250	247
421		1892 covers (3, some light staining) from the same correspondence to Kingston, each bearing 1889 1d. and tied by "A32", "A53" and "A62" obliterations with Buff Bay, Spur Tree and P.G. River c.d.s. respectively on reverse	£65	99
422		1895 (Feb.) cover (faults) to Bermuda, bearing Postal Fiscal 1857 3d. tied by Kingston c.d.s., 1896 (May) cover to Blue Mountain Valley P.O., bearing Postal Fiscal 1857 1½d. tied by Kingston c.d.s., and 1898 (Aug.) cover (faults) to Port Antonio P.O., bearing Telegraph 3d. tied by Buff Bay c.d.s.	£50	93
423	Photo	1915 (Mar.) cover (opened-out, slight discoloration and other faults) to U.S.A., marked <i>"Through Brigade Office"</i> , showing framed <i>"FREE/ Letter of Prisoner of War."</i> , <i>"Passed Censor."</i> and, on reverse, large framed <i>"Answer to be addressed to / P. of W. Brigade Office/Jamaica."</i> , all in violet.	£100	77