

Jamaica 1907 Earthquake – Postcards contributed by S Jarvis



Cleary – Kingston Market Lane

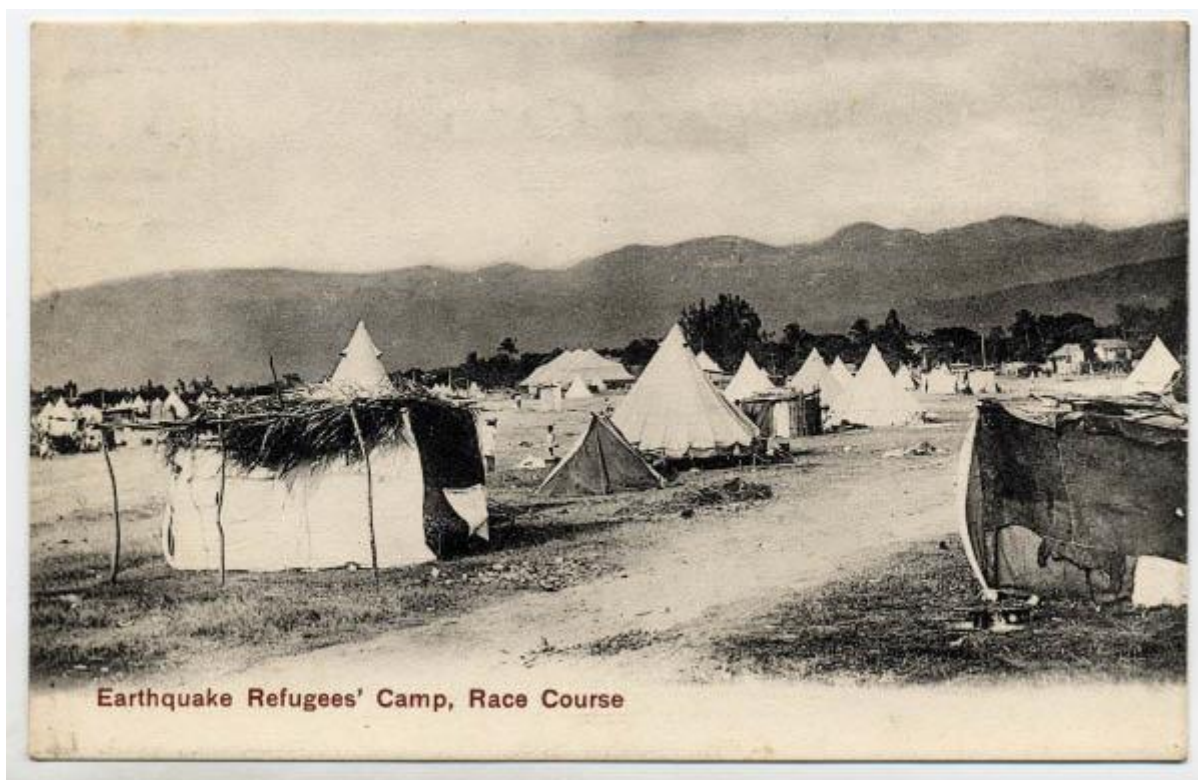


Cleary – Kingston Parish Church Interior

Jamaica 1907 Earthquake – Postcards contributed by S Jarvis



Cleary – Officers Grs Camp



Earthquake 2

Jamaica 1907 Earthquake – Postcards contributed by S Jarvis



Earthquake 3

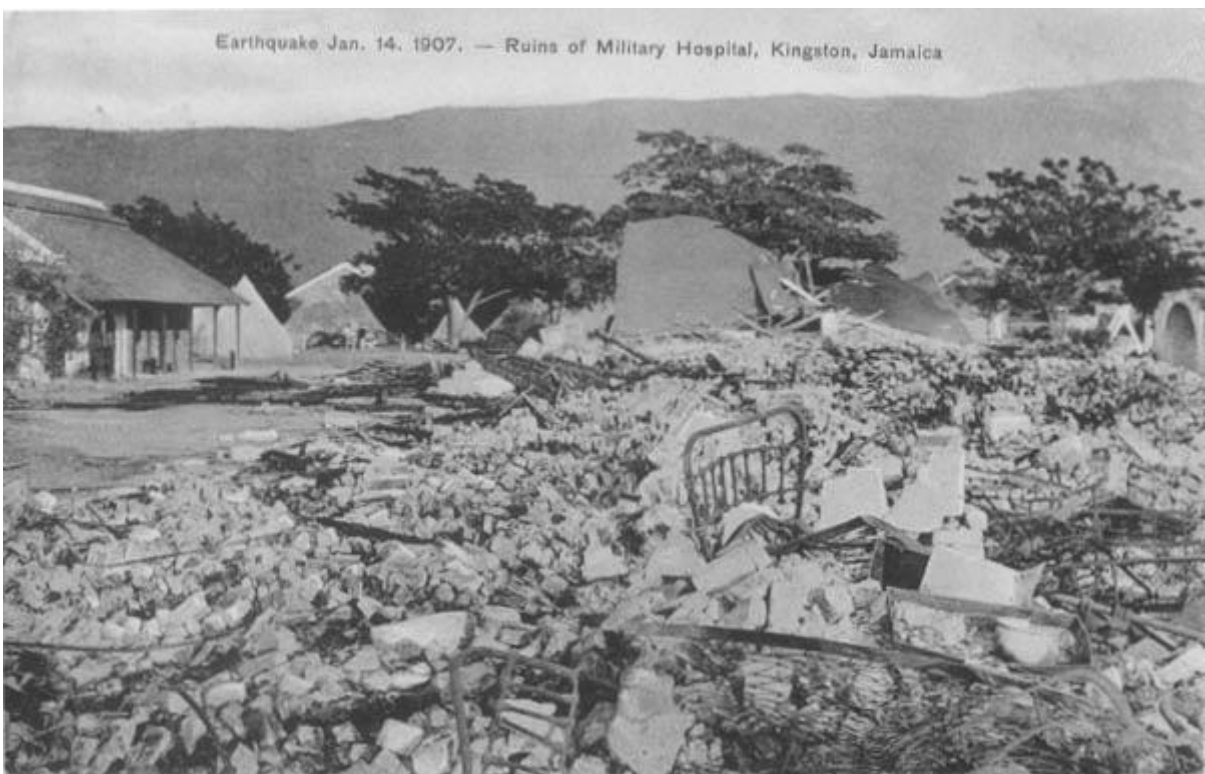


Educational Supply Co – Kingston Garrison Chapel

Jamaica 1907 Earthquake – Postcards contributed by S Jarvis



Educational Supply Co – Kingston Louisville



Educational Supply Co – Kingston Military Hospital

Jamaica 1907 Earthquake – Postcards contributed by S Jarvis



Educational Supply Co – Kingston Woodbines

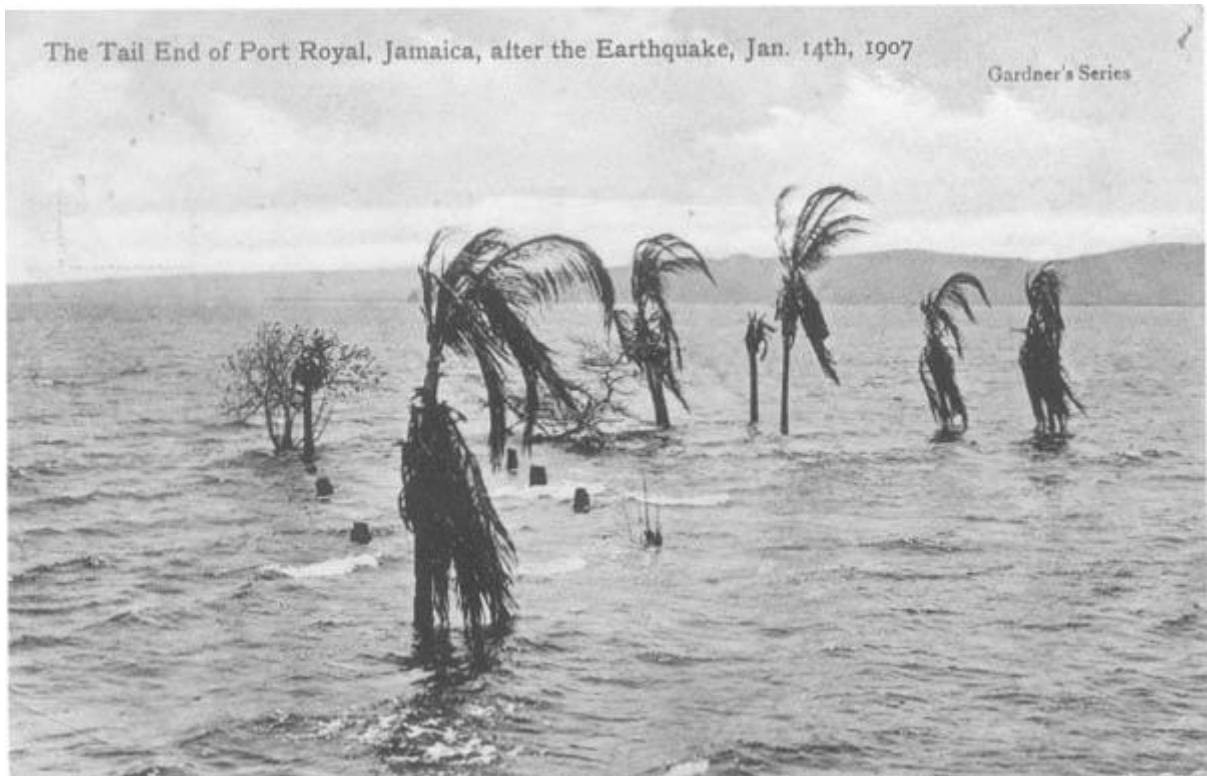


Gardner – Kingston Clearing Port Royal St



Gardner – Kingston Post Office & Court House

Jamaica 1907 Earthquake – Postcards contributed by S Jarvis



Gardner – Port Royal Tail End



Gardner – Up Park Camp Officers Quarters

Jamaica 1907 Earthquake – Postcards contributed by S Jarvis



No time to  
write today

Brian  
L.B.

So sorry

After the Earthquake, January 14th, 1907, Jamaica.

Gardner's Series.

PAYMASTER'S OFFICE, UP PARK CAMP.

Gardner – Up Park Camp Paymasters Office



Great Earthquake Disaster. Corner King and Harbour Streets, Kingston, Jamaica, W.I

from Daddy

Valentines – Kingston Corner King&Harbour St



Jamaica 1907 Earthquake – Postcards contributed by S Jarvis



Valentines – Kingston Duke St



Valentines – Kingston King St Burnt Car